



UK Office

Everest Biotech Ltd

Cherwell Innovation Centre
77 Heyford Park
Upper Heyford
Oxfordshire
OX25 5HD
UK

Enquiries:

info@everestbiotech.com

Sales:

sales@everestbiotech.com

Tech support:

support@everestbiotech.com

Tel: +44 (0)1869 238326

Fax: +44 (0)1869 238327

US Office

Everest Biotech c/o Abcore

405 Maple Street, Suite A106
Ramona,
CA 92065
USA

Inquiries:

info@everestbiotech.com

Sales:

usasales@everestbiotech.com

Tech support:

support@everestbiotech.com

Tel: 888-320-4628 (toll-free)

Fax: 888-841-9041

www.everestbiotech.com

**Research Use Only. Not for
diagnostic or therapeutic use.**

EB11719 - Goat Anti-MMP3 (aa459-473) Antibody

Size: 100µg specific antibody in 200µl



Target Protein

Principal Names: CHDS6, matrix metallopeptidase 3 (stromelysin 1, progelatinase), matrix metalloproteinase 3 (stromelysin 1, progelatinase), matrix metalloproteinase-3, MGC126102, MGC126103, MGC126104, MMP3, MMP-3, OTTHUMP00000045949, proteoglycan, SL-1, STMY, STMY1, STR1

Official Symbol: MMP3

Accession Number(s): NP_002413.1

Human GeneID(s): [4314](#)

Immunogen

Peptide with sequence C-DPNAKKVTHLKSNS, from the C Terminus of the protein sequence according to NP_002413.1.

Please note the [peptide](#) is available for sale.

Purification and Storage

Purified from goat serum by ammonium sulphate precipitation followed by antigen affinity chromatography using the immunizing peptide.

Supplied at 0.5 mg/ml in Tris saline, 0.02% sodium azide, pH7.3 with 0.5% bovine serum albumin.

Aliquot and store at -20°C. Minimize freezing and thawing.

Applications Tested

Peptide ELISA: antibody detection limit dilution 1:128000.

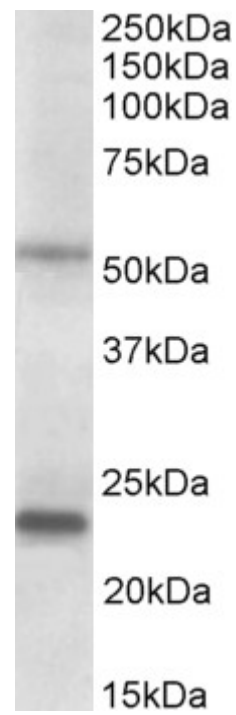
Western blot: Approx 55kDa band observed in Human Prostate and approx. 60kDa band in Mouse Eye lysates (calculated MW of 54.0 kDa according to Human NP_002413.1 and Mouse NP_034939.1). Recommended concentration: 0.1-0.3µg/ml. An additional band of unknown identity was also consistently observed at 24kDa in Human. This band was successfully blocked by incubation with the immunizing peptide.

IHC: Paraffin embedded Human Kidney. Recommended concentration: 4-6µg/ml.

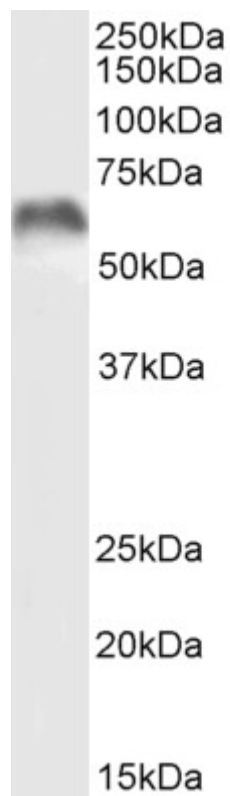
Species Reactivity

Tested: Human, Mouse

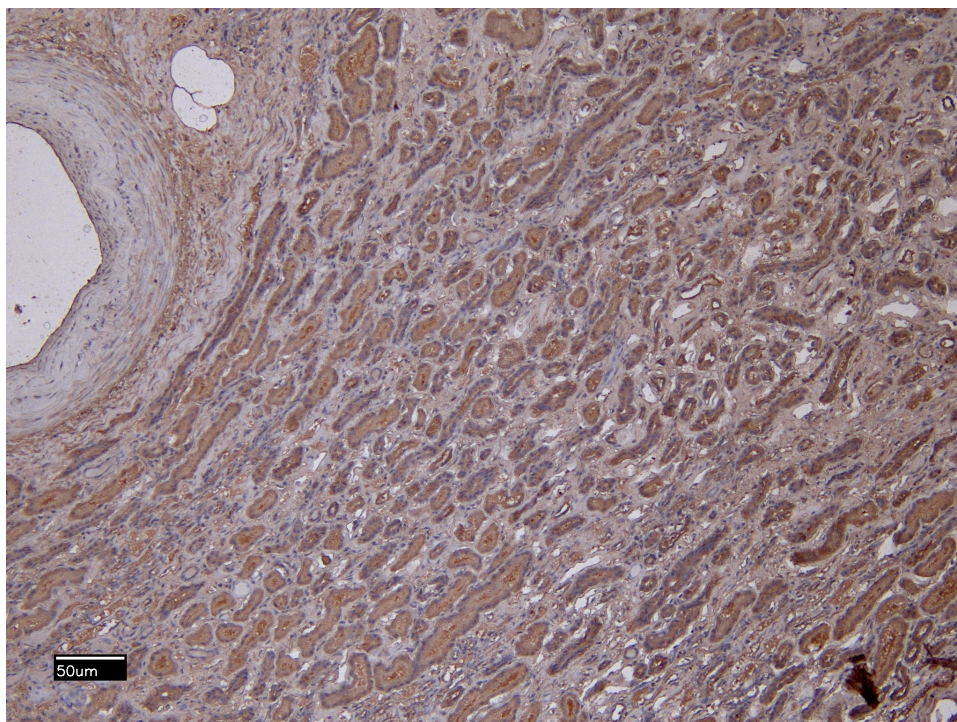
Expected from sequence similarity: Human



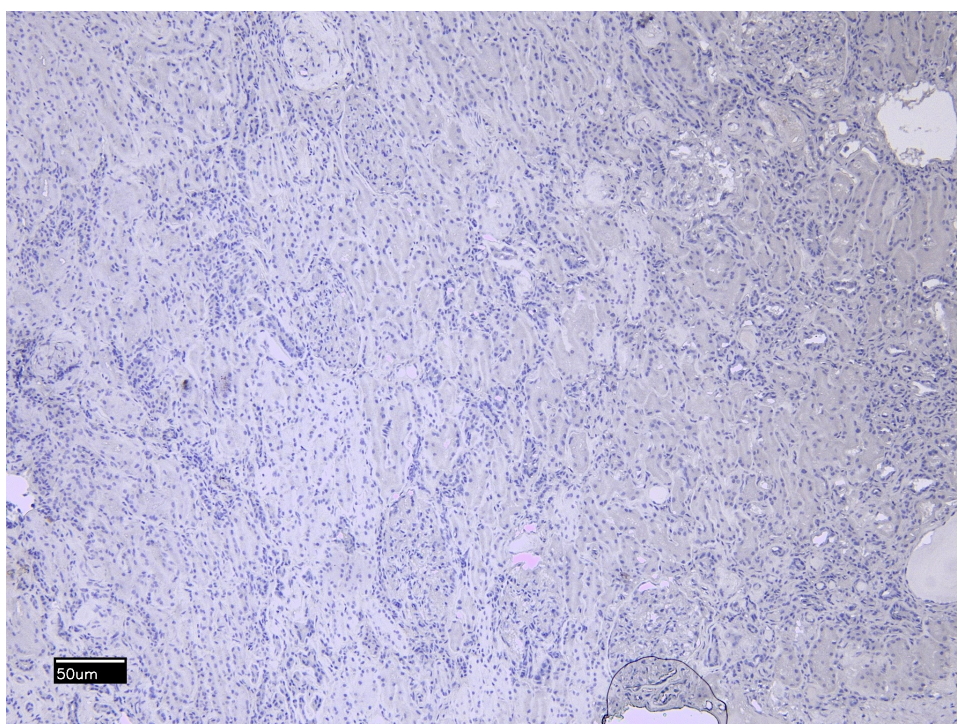
EB11719 (0.2 μ g/ml) staining of Human Prostate lysate (35 μ g protein in RIPA buffer). Primary incubation was 1 hour. Detected by chemiluminescence.



EB11719 (0.3 μ g/ml) staining of Mouse Eye lysate (35 μ g protein in RIPA buffer). Primary incubation was 1 hour. Detected by chemiluminescence.



EB11719 (6μg/ml) staining of paraffin embedded Human Kidney. Heat induced antigen retrieval with citrate buffer pH 6, HRP-staining.



EB11719 Negative Control showing staining of paraffin embedded Human Kidney, with no primary antibody.