



## UK Office

### Everest Biotech Ltd

Cherwell Innovation Centre  
77 Heyford Park  
Upper Heyford  
Oxfordshire  
OX25 5HD  
UK

Enquiries:

[info@everestbiotech.com](mailto:info@everestbiotech.com)

Sales:

[sales@everestbiotech.com](mailto:sales@everestbiotech.com)

Tech support:

[support@everestbiotech.com](mailto:support@everestbiotech.com)

Tel: +44 (0)1869 238326

Fax: +44 (0)1869 238327

## US Office

### Everest Biotech c/o Abcore

405 Maple Street, Suite A106  
Ramona,  
CA 92065  
USA

Inquiries:

[info@everestbiotech.com](mailto:info@everestbiotech.com)

Sales:

[usasales@everestbiotech.com](mailto:usasales@everestbiotech.com)

Tech support:

[support@everestbiotech.com](mailto:support@everestbiotech.com)

Tel: 888-320-4628 (toll-free)

Fax: 888-841-9041

[www.everestbiotech.com](http://www.everestbiotech.com)

**Research Use Only. Not for  
diagnostic or therapeutic use.**

## EB06890 - Goat Anti-MMP9 Antibody

Size: 100µg specific antibody in 200µl



## Target Protein

**Principal Names:** MMP9, matrix metalloproteinase 9, gelatinase B, 92kDa gelatinase, 92kDa type IV collagenase, HGNC:7176, CLG4B, GELB, 92kD type IV collagenase, gelatinaseB, macrophage gelatinase, matrix metalloproteinase 9 (gelatinase B, 92kD gelatinase, 92kD type IV collagenase), type V collagenase

**Official Symbol:** MMP9

**Accession Number(s):** NP\_004985.2

**Human GeneID(s):** [4318](#)

## Immunogen

Peptide with sequence C-KLDSVFEEPLSKK, from the internal region of the protein sequence according to NP\_004985.2.

Please note the [peptide](#) is available for sale.

## Purification and Storage

Purified from goat serum by ammonium sulphate precipitation followed by antigen affinity chromatography using the immunizing peptide.

Supplied at 0.5 mg/ml in Tris saline, 0.02% sodium azide, pH7.3 with 0.5% bovine serum albumin.

Aliquot and store at -20°C. Minimize freezing and thawing.

## Applications Tested

**Peptide ELISA:** antibody detection limit dilution 1:64000.

**Western blot:** Approx.80kDa and 70kDa bands observed in Human Peripheral Blood Mononucleocytes lysates. These bands correspond to the mature forms (<http://www.uniprot.org/uniprot/P14780>). This protein has a calculated MW of 78.5kDa according to NP\_004985.2, but the precursor is usually seen as 92kDa or larger.

Recommended concentration: 1-3µg/ml. Approx.75kDa band observed in Mouse Heart lysates (calculated MW of 80.5kDa according to Mouse NP\_038627.1). Recommended concentration: 0.1-0.3µg/ml.

**Immunofluorescence:** Strong expression of the protein seen in the cytoplasm of U2OS and HeLa cells. Recommended concentration: 10µg/ml.

## Species Reactivity

**Tested:** Human, Mouse

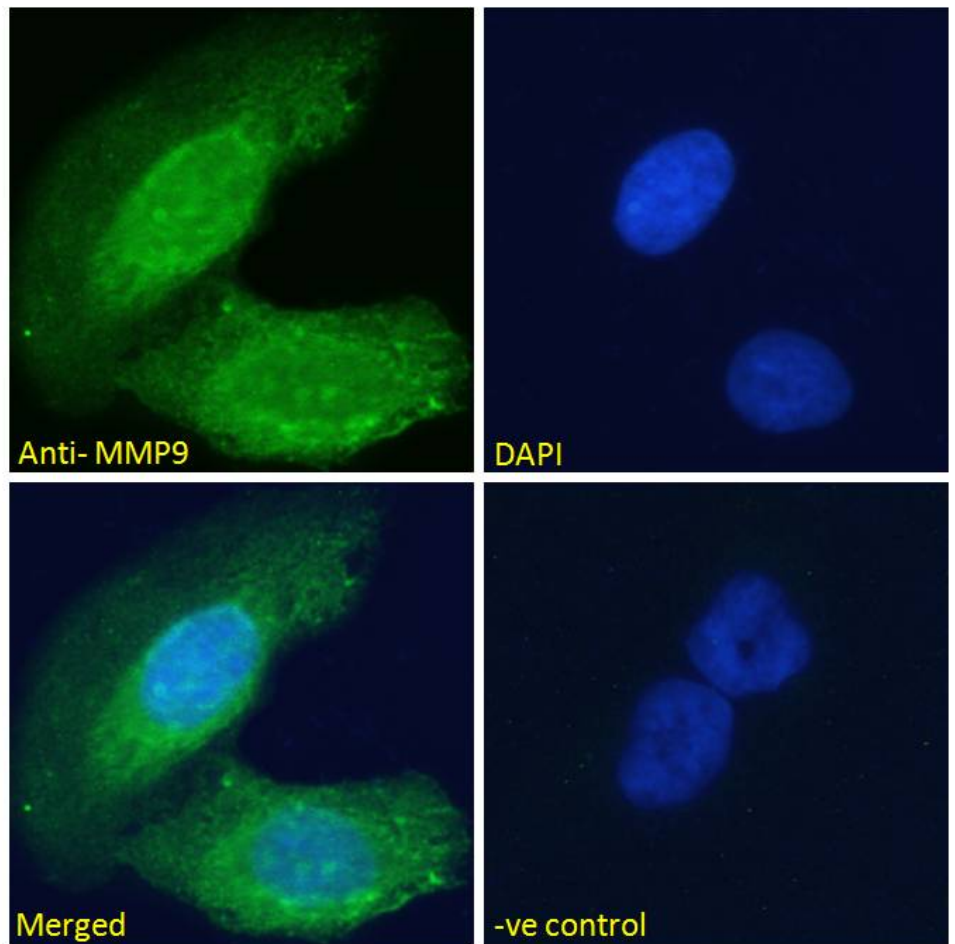
**Expected from sequence similarity:** Human



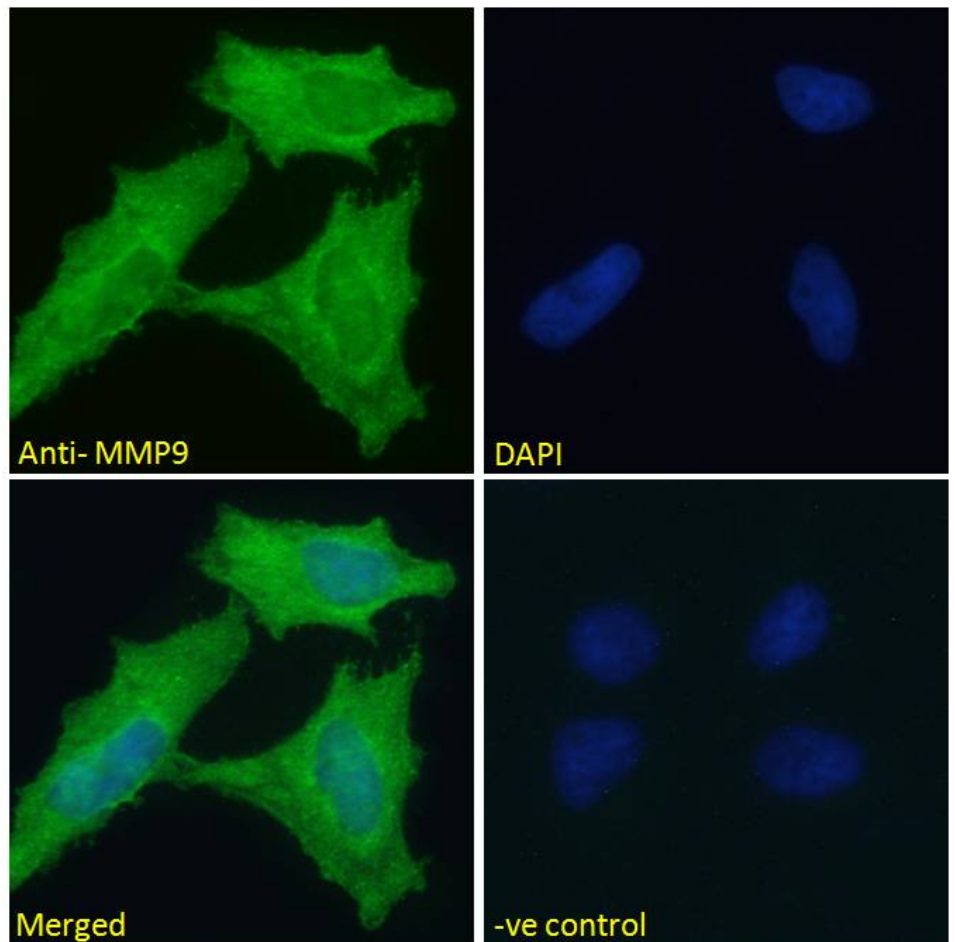
EB06890 (1 $\mu$ g/ml) staining of Peripheral Blood Lymphocytes lysate (35 $\mu$ g protein in RIPA buffer). Primary incubation was 1 hour. Detected by chemiluminescence.



EB06890 (0.1 $\mu$ g/ml) staining of Mouse Heart lysate (35 $\mu$ g protein in RIPA buffer). Primary incubation was 1 hour. Detected by chemiluminescence.



EB06890 Immunofluorescence analysis of paraformaldehyde fixed U2OS cells, permeabilized with 0.15% Triton. Primary incubation 1hr (10ug/ml) followed by Alexa Fluor 488 secondary antibody (2ug/ml), showing cytoplasmic staining. The nuclear stain is DAPI (blue). Negative control: Unimmunized goat IgG (10ug/ml) followed by Alexa Fluor 488 secondary antibody (2ug/ml).



EB06890 Immunofluorescence analysis of paraformaldehyde fixed HeLa cells, permeabilized with 0.15% Triton. Primary incubation 1hr (10ug/ml) followed by Alexa Fluor 488 secondary antibody (2ug/ml), showing cytoplasmic staining. The nuclear stain is DAPI (blue). Negative control: Unimmunized goat IgG (10ug/ml) followed by Alexa Fluor 488 secondary antibody (2ug/ml).