



## UK Office

### Everest Biotech Ltd

Cherwell Innovation Centre  
77 Heyford Park  
Upper Heyford  
Oxfordshire  
OX25 5HD  
UK

Enquiries:

[info@everestbiotech.com](mailto:info@everestbiotech.com)

Sales:

[sales@everestbiotech.com](mailto:sales@everestbiotech.com)

Tech support:

[support@everestbiotech.com](mailto:support@everestbiotech.com)

Tel: +44 (0)1869 238326

Fax: +44 (0)1869 238327

## US Office

### Everest Biotech c/o Abcore

405 Maple Street, Suite A106  
Ramona,  
CA 92065  
USA

Inquiries:

[info@everestbiotech.com](mailto:info@everestbiotech.com)

Sales:

[usasales@everestbiotech.com](mailto:usasales@everestbiotech.com)

Tech support:

[support@everestbiotech.com](mailto:support@everestbiotech.com)

Tel: 888-320-4628 (toll-free)

Fax: 888-841-9041

[www.everestbiotech.com](http://www.everestbiotech.com)

**Research Use Only. Not for  
diagnostic or therapeutic use.**

## EB10971 - Goat Anti-MNSOD (isoform A) Antibody

Size: 100µg specific antibody in 200µl



### Target Protein

**Principal Names:** SOD2, superoxide dismutase 2, mitochondrial, RP1-56L9.2, IPOB, MNSOD, MVCD6, Mn superoxide dismutase, indophenoloxidase B, manganese-containing superoxide dismutase, superoxide dismutase [Mn], mitochondrial

**Official Symbol:** SOD2

**Accession Number(s):** NP\_000627.2

**Human GeneID(s):** [6648](#)

**Important Comments:** This antibody is expected to recognize isoform A (NP\_000627.2) only. Reported variants represent identical protein: NP\_000627.2; NP\_001019636.1.

### Immunogen

Peptide with sequence C-DVTAQIALQPALKFN, from the internal region of the protein sequence according to NP\_000627.2.

Please note the [peptide](#) is available for sale.

### Purification and Storage

Purified from goat serum by ammonium sulphate precipitation followed by antigen affinity chromatography using the immunizing peptide.

Supplied at 0.5 mg/ml in Tris saline, 0.02% sodium azide, pH7.3 with 0.5% bovine serum albumin.

Aliquot and store at -20°C. Minimize freezing and thawing.

### Applications Tested

**Peptide ELISA:** antibody detection limit dilution 1:32000.

**Western blot:** Approx 23kDa band observed in Human Brain (Cerebellum, Cerebral Cortex) and HeLa lysates (calculated MW of 24.8kDa according to NP\_000627.2).

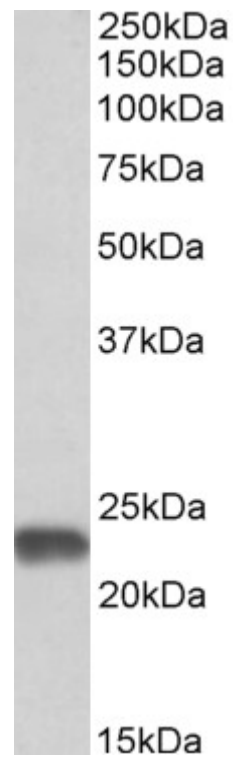
Recommended concentration: 0.01-0.03µg/ml. Primary incubation was 1 hour.

**IHC:** Paraffin embedded Human Cortex. Recommended concentration: 5µg/ml.

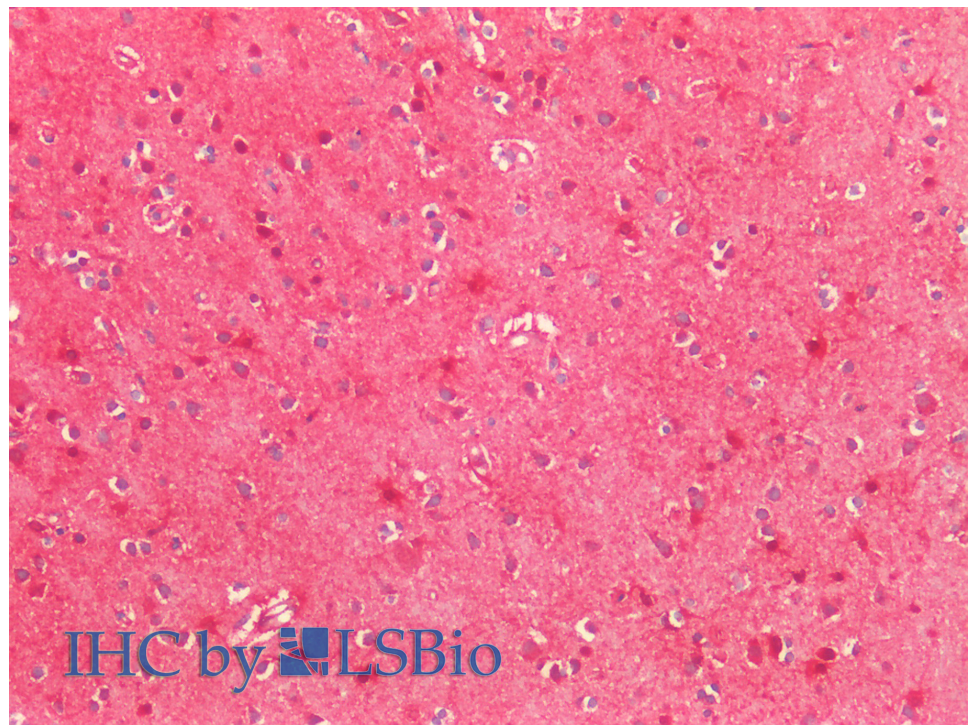
### Species Reactivity

**Tested:** Human

**Expected from sequence similarity:** Human, Pig, Cow



EB10971 (0.01µg/ml) staining of Human Cerebellum lysate (35µg protein in RIPA buffer). Detected by chemiluminescence.



EB10971 (5µg/ml) staining of paraffin embedded Human Cortex. Steamed antigen retrieval with citrate buffer pH 6, AP-staining.