



UK Office

Everest Biotech Ltd

Cherwell Innovation Centre
77 Heyford Park
Upper Heyford
Oxfordshire
OX25 5HD
UK

Enquiries:

info@everestbiotech.com

Sales:

sales@everestbiotech.com

Tech support:

support@everestbiotech.com

Tel: +44 (0)1869 238326

Fax: +44 (0)1869 238327

US Office

Everest Biotech c/o Abcore

405 Maple Street, Suite A106
Ramona,
CA 92065
USA

Inquiries:

info@everestbiotech.com

Sales:

usasales@everestbiotech.com

Tech support:

support@everestbiotech.com

Tel: 888-320-4628 (toll-free)

Fax: 888-841-9041

www.everestbiotech.com

**Research Use Only. Not for
diagnostic or therapeutic use.**

EB06668 - Goat Anti-MOG Antibody

Size: 100µg specific antibody in 200µl



Target Protein

Principal Names: MOG, MGC26137, myelin oligodendrocyte glycoprotein, DAQB-92E24.2, MOGIG-2, MOG Ig-AluB, MOG alpha-6

Official Symbol: MOG

Accession Number(s): NP_996532.2; NP_996535.2; NP_001008229.1

Human GeneID(s): [4340](#)

Important Comments: This antibody is expected to recognise NP_996532.2 (isf a1), NP_996535.2 (isf a2) and NP_001008229.1 (isf a3)

Immunogen

Peptide with sequence C-AGQFLEELRNPF, from the C Terminus of the protein sequence according to NP_996532.2; NP_996535.2; NP_001008229.1.

Please note the [peptide](#) is available for sale.

Purification and Storage

Purified from goat serum by ammonium sulphate precipitation followed by antigen affinity chromatography using the immunizing peptide.

Supplied at 0.5 mg/ml in Tris saline, 0.02% sodium azide, pH7.3 with 0.5% bovine serum albumin.

Aliquot and store at -20°C. Minimize freezing and thawing.

Applications Tested

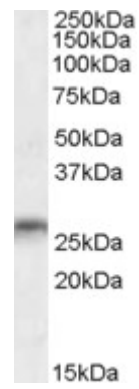
Peptide ELISA: antibody detection limit dilution 1:16000.

Western blot: Western Blot: Approx 26kDa band observed in Human Brain lysates (calculated MW of 25.4kDa according to NP_001008229.1). Recommended concentration: 0.03-0.1µg/ml. Primary incubation was for 1 hour.

Species Reactivity

Tested: Human

Expected from sequence similarity: Human, Mouse, Rat, Pig, Cow



EB06668 (0.03µg/ml) staining of Human Amygdala lysate (35µg protein in RIPA buffer). Detected by chemiluminescence.