



UK Office

Everest Biotech Ltd

Cherwell Innovation Centre
77 Heyford Park
Upper Heyford
Oxfordshire
OX25 5HD
UK

Enquiries:

info@everestbiotech.com

Sales:

sales@everestbiotech.com

Tech support:

support@everestbiotech.com

Tel: +44 (0)1869 238326

Fax: +44 (0)1869 238327

US Office

Everest Biotech c/o Abcore

405 Maple Street, Suite A106
Ramona,
CA 92065
USA

Inquiries:

info@everestbiotech.com

Sales:

usasales@everestbiotech.com

Tech support:

support@everestbiotech.com

Tel: 888-320-4628 (toll-free)

Fax: 888-841-9041

www.everestbiotech.com

**Research Use Only. Not for
diagnostic or therapeutic use.**

EB06079-B - Goat Anti-MRG15 / MORF4L1, Biotinylated Antibody

Size: 100µg specific antibody in 200µl



Target Protein

Principal Names: MORF4L1, mortality factor 4 like 1, Eaf3, FWP006, HsT17725, MEAF3, MORFRG15, MRG15, S863-6, Esa1p-associated factor 3 homolog, MORF-related gene 15 protein, MORF-related gene on chromosome 15, protein MSL3-1, transcription factor-like protein MRG15, MGC10631

Official Symbol: MORF4L1

Accession Number(s): NP_006782.1; NP_996670.1

Human GeneID(s): [10933](#)

Non-Human GeneID(s): 21761 (mouse)

Important Comments: This antibody is expected to recognise isoform 1 (NP_006782.1) and isoform 2 (NP_996670.1).

Immunogen

Peptide with sequence APKQDPKPKFQEGC., from the N Terminus of the protein sequence according to NP_006782.1; NP_996670.1.

Please note the [peptide](#) is available for sale.

Purification and Storage

Purified from goat serum by ammonium sulphate precipitation followed by antigen affinity chromatography using the immunizing peptide.

Supplied at 0.5 mg/ml in Tris saline, 0.02% sodium azide, pH7.3 with 0.5% bovine serum albumin.

Aliquot and store at -20°C. Minimize freezing and thawing.

Applications Tested

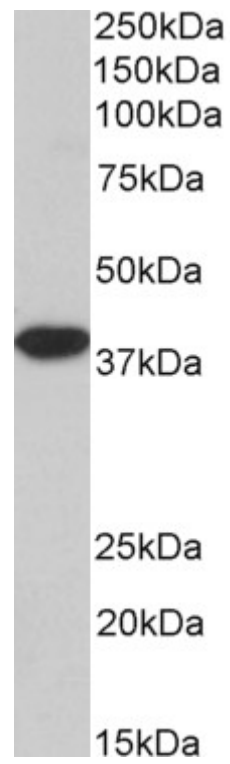
Peptide ELISA: antibody detection limit dilution 1:128000.

Western blot: Approx 38kDa band observed in Mouse Liver lysates (calculated MW of 37.2kDa according to Mouse NP_077751.1). See non-biotinylated parental product's datasheet for further QC data. Recommended concentration: 2-4µg/ml.

Species Reactivity

Tested: Mouse, Rat

Expected from sequence similarity: Human



Biotinylated EB06079 (3.3 μ g/ml) staining of Mouse Liver lysate (35 μ g protein in RIPA buffer), exactly mirroring its parental non-biotinylated product. Primary incubation was 1 hour. Detected by chemiluminescence, using streptavidin-HRP and using NAP blocker as a substitute for skimmed milk.