



## UK Office

### Everest Biotech Ltd

Cherwell Innovation Centre  
77 Heyford Park  
Upper Heyford  
Oxfordshire  
OX25 5HD  
UK

Enquiries:

[info@everestbiotech.com](mailto:info@everestbiotech.com)

Sales:

[sales@everestbiotech.com](mailto:sales@everestbiotech.com)

Tech support:

[support@everestbiotech.com](mailto:support@everestbiotech.com)

Tel: +44 (0)1869 238326

Fax: +44 (0)1869 238327

## US Office

### Everest Biotech c/o Abcore

405 Maple Street, Suite A106  
Ramona,  
CA 92065  
USA

Inquiries:

[info@everestbiotech.com](mailto:info@everestbiotech.com)

Sales:

[usasales@everestbiotech.com](mailto:usasales@everestbiotech.com)

Tech support:

[support@everestbiotech.com](mailto:support@everestbiotech.com)

Tel: 888-320-4628 (toll-free)

Fax: 888-841-9041

[www.everestbiotech.com](http://www.everestbiotech.com)

**Research Use Only. Not for  
diagnostic or therapeutic use.**

## EB08699 - Goat Anti-MRP5 Antibody

Size: 100µg specific antibody in 200µl



### Target Protein

**Principal Names:** MRP5, DKFZp686C1782, ABCC5, ATP-binding cassette, sub-family C (CFTR/MRP), member 5, ABC33, EST277145, MOAT-C, MOATC, SMRP, pABC11, ATP-binding cassette, sub-family C, member 5, canalicular multispecific organic anion transporter C

**Official Symbol:** ABCC5

**Accession Number(s):** NP\_005679.2; NP\_001018881.1

**Human GeneID(s):** [10057](#)

**Non-Human GeneID(s):** 27416 (mouse), 116721 (rat)

**Important Comments:** This antibody is expected to recognize both reported isoforms (NP\_005679.2; NP\_001018881.1).

### Immunogen

Peptide with sequence KDIDIGKEYIIP-C, from the N Terminus of the protein sequence according to NP\_005679.2; NP\_001018881.1.

Please note the [peptide](#) is available for sale.

### Purification and Storage

Purified from goat serum by ammonium sulphate precipitation followed by antigen affinity chromatography using the immunizing peptide.

Supplied at 0.5 mg/ml in Tris saline, 0.02% sodium azide, pH7.3 with 0.5% bovine serum albumin.

Aliquot and store at -20°C. Minimize freezing and thawing.

### Applications Tested

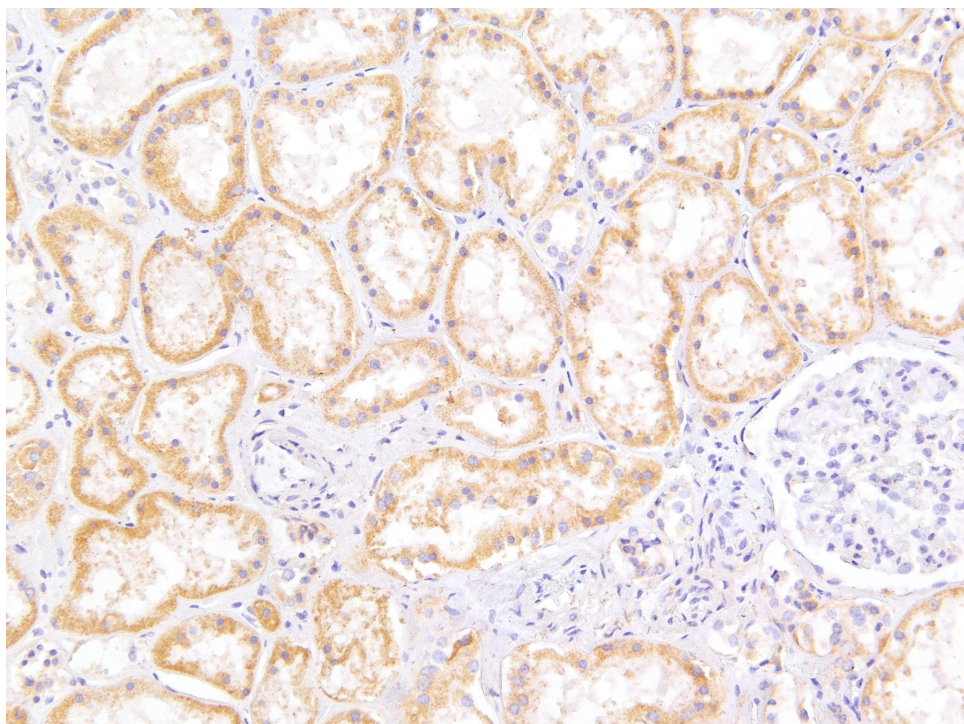
**Peptide ELISA:** antibody detection limit dilution 1:128000.

**IHC:** Paraffin embedded Human Kidney. Recommended concentration: 5µg/ml.

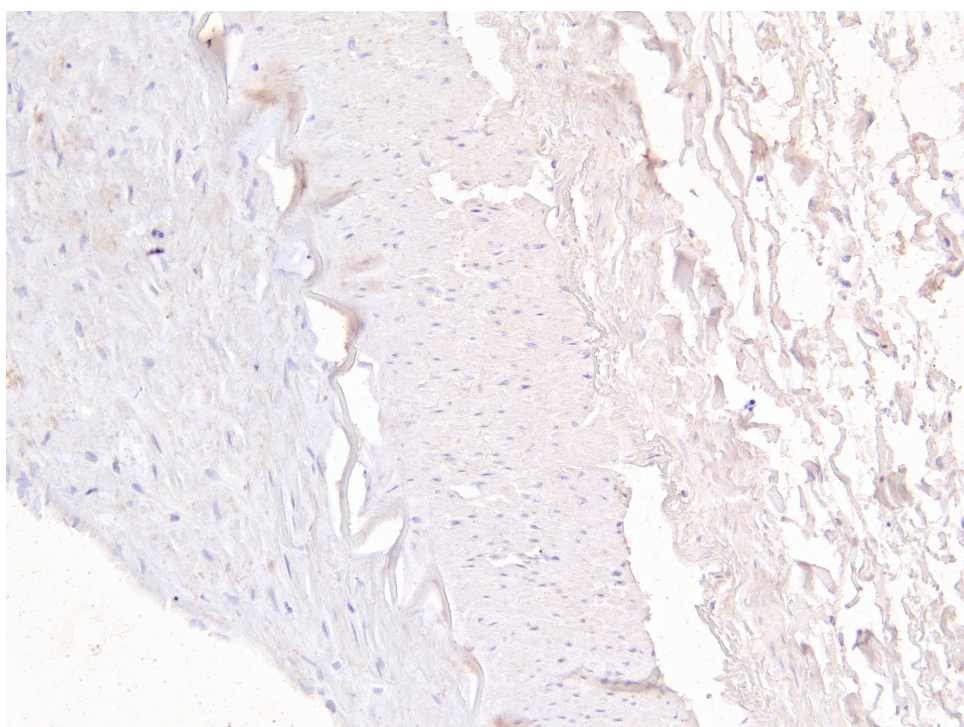
### Species Reactivity

**Tested:** Human

**Expected from sequence similarity:** Human, Mouse, Rat, Dog, Pig, Cow



EB08699 (5µg/ml) staining of paraffin embedded Human Kidney. Heat induced antigen retrieval with citrate buffer pH 6, HRP-staining.



EB08699 Negative Control showing staining of paraffin embedded Human Kidney, with no primary antibody.