



## UK Office

### Everest Biotech Ltd

Cherwell Innovation Centre  
77 Heyford Park  
Upper Heyford  
Oxfordshire  
OX25 5HD  
UK

Enquiries:

[info@everestbiotech.com](mailto:info@everestbiotech.com)

Sales:

[sales@everestbiotech.com](mailto:sales@everestbiotech.com)

Tech support:

[support@everestbiotech.com](mailto:support@everestbiotech.com)

Tel: +44 (0)1869 238326

Fax: +44 (0)1869 238327

## US Office

### Everest Biotech c/o Abcore

405 Maple Street, Suite A106  
Ramona,  
CA 92065  
USA

Inquiries:

[info@everestbiotech.com](mailto:info@everestbiotech.com)

Sales:

[usasales@everestbiotech.com](mailto:usasales@everestbiotech.com)

Tech support:

[support@everestbiotech.com](mailto:support@everestbiotech.com)

Tel: 888-320-4628 (toll-free)

Fax: 888-841-9041

[www.everestbiotech.com](http://www.everestbiotech.com)

**Research Use Only. Not for  
diagnostic or therapeutic use.**

## EB08705 - Goat Anti-MRP8 / ABCC11 Antibody

Size: 100µg specific antibody in 200µl



### Target Protein

**Principal Names:** ABCC11, ATP-binding cassette transporter MRP8, ATP-binding cassette, sub-family C (CFTR/MRP), member 11, EWWD, MRP8, WW, ATP-binding cassette protein C11, ATP-binding cassette, sub-family C, member 11, multi-resistance protein 8

**Official Symbol:** ABCC11

**Accession Number(s):** NP\_115972.2; NP\_660187.1; NP\_001357425.1

**Human GeneID(s):** [85320](#)

### Immunogen

Peptide with sequence C-KVVEFDRPEVLRK, from the internal region (near C Terminus) of the protein sequence according to NP\_115972.2; NP\_660187.1; NP\_001357425.1.

Please note the [peptide](#) is available for sale.

### Purification and Storage

Purified from goat serum by ammonium sulphate precipitation followed by antigen affinity chromatography using the immunizing peptide.

Supplied at 0.5 mg/ml in Tris saline, 0.02% sodium azide, pH7.3 with 0.5% bovine serum albumin.

Aliquot and store at -20°C. Minimize freezing and thawing.

### Applications Tested

**Peptide ELISA:** antibody detection limit dilution 1:32000.

**Western blot:** Approx 125kDa band observed in Human Testis lysates and in preliminary testing of Breast lysate (calculated MW of 150kDa according to NP\_660187.1). This molecular weight is routinely observed by other sources. Recommended concentration: 0.5-1.5µg/ml. Primary incubation 1 hour at room temperature.

**IHC:** Paraffin embedded Human Breast. Recommended concentration: 3.75µg/ml.

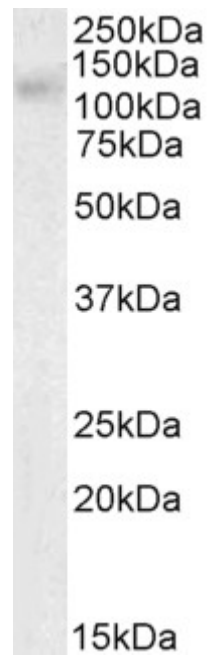
**Immunofluorescence:** Strong expression of the protein seen in the membranes and cytoplasm of HeLa cells. Recommended concentration: 10µg/ml.

**Flow Cytometry:** Flow cytometric analysis of HeLa cells. Recommended concentration: 10ug/ml.

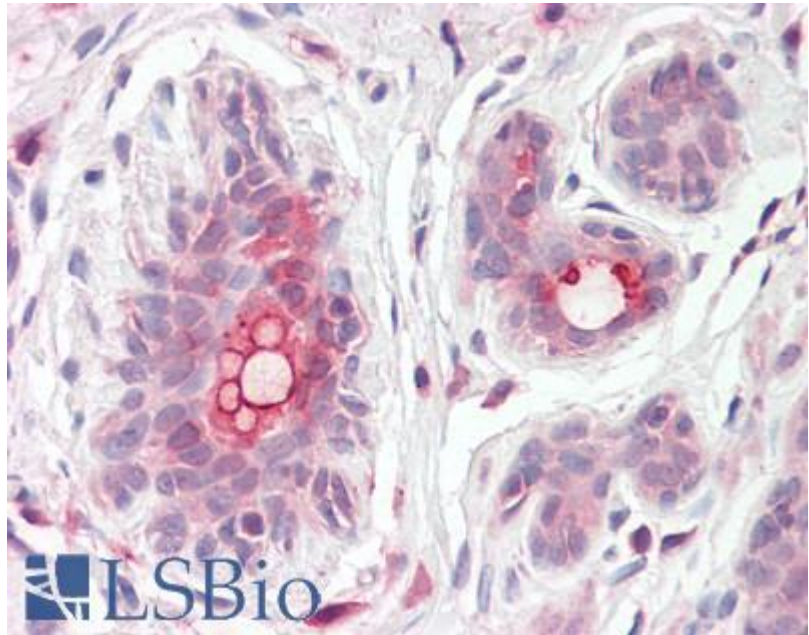
### Species Reactivity

**Tested:** Human

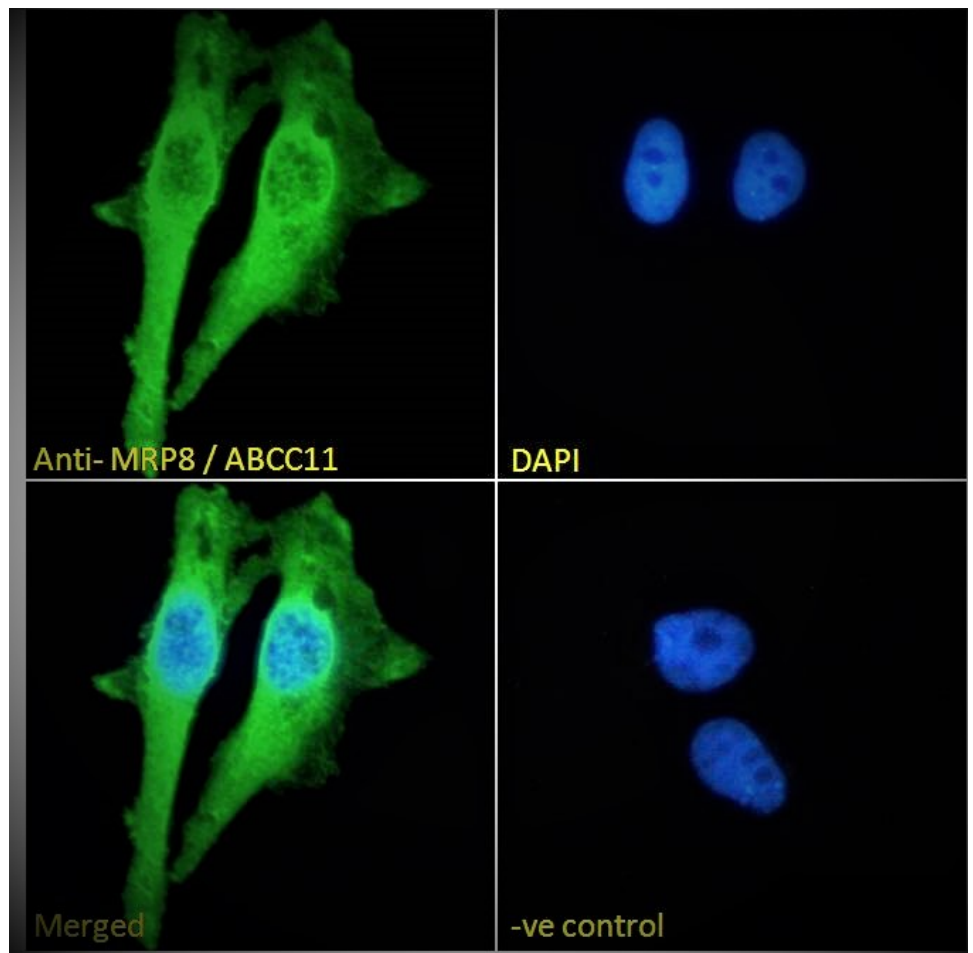
**Expected from sequence similarity:** Human



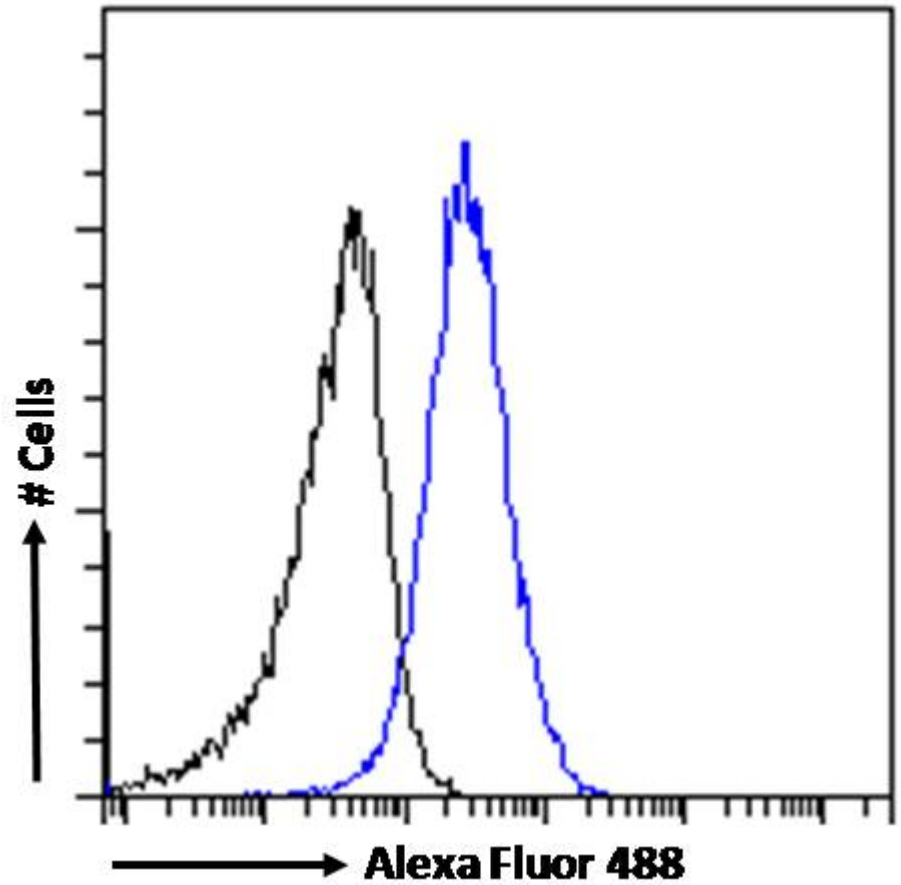
EB08705 (0.5 $\mu$ g/ml) staining of Human Testes lysate (35 $\mu$ g protein in RIPA buffer). Detected by chemiluminescence.



EB08705 (3.75 $\mu$ g/ml) staining of paraffin embedded Human Breast. Steamed antigen retrieval with citrate buffer pH 6, AP-staining.



EB08705 Immunofluorescence analysis of paraformaldehyde fixed HeLa cells, permeabilized with 0.15% Triton. Primary incubation 1hr (10ug/ml) followed by Alexa Fluor 488 secondary antibody (2ug/ml), showing membrane and cytoplasmic staining. The nuclear stain is DAPI (blue). Negative control: Unimmunized goat IgG (10ug/ml) followed by Alexa Fluor 488 secondary antibody (2ug/ml).



EB08705 Flow cytometric analysis of paraformaldehyde fixed HeLa cells (blue line), permeabilized with 0.5% Triton. Primary incubation 1hr (10ug/ml) followed by Alexa Fluor 488 secondary antibody (1ug/ml). IgG control: Unimmunized goat IgG (black line) followed by Alexa Fluor 488 secondary antibody.