



## UK Office

### Everest Biotech Ltd

Cherwell Innovation Centre  
77 Heyford Park  
Upper Heyford  
Oxfordshire  
OX25 5HD  
UK

Enquiries:

[info@everestbiotech.com](mailto:info@everestbiotech.com)

Sales:

[sales@everestbiotech.com](mailto:sales@everestbiotech.com)

Tech support:

[support@everestbiotech.com](mailto:support@everestbiotech.com)

Tel: +44 (0)1869 238326

Fax: +44 (0)1869 238327

## US Office

### Everest Biotech c/o Abcore

405 Maple Street, Suite A106  
Ramona,  
CA 92065  
USA

Inquiries:

[info@everestbiotech.com](mailto:info@everestbiotech.com)

Sales:

[usasales@everestbiotech.com](mailto:usasales@everestbiotech.com)

Tech support:

[support@everestbiotech.com](mailto:support@everestbiotech.com)

Tel: 888-320-4628 (toll-free)

Fax: 888-841-9041

[www.everestbiotech.com](http://www.everestbiotech.com)

**Research Use Only. Not for  
diagnostic or therapeutic use.**

## EB08335 - Goat Anti-MSH5 Antibody

Size: 100µg specific antibody in 200µl



### Target Protein

**Principal Names:** MSH5, mutS homolog 5 (E. coli), XXbac-BCX40G17.5, DKFZp434C1615, G7N: MGC2939, MutSH5, NG23, mutS homolog 5

**Official Symbol:** MSH5

**Accession Number(s):** NP\_079535.3 ; NP\_751897.1; NP\_002432.1

**Human GeneID(s):** [4439](#)

**Non-Human GeneID(s):** 17687 (mouse), 294252 (rat)

**Important Comments:** This antibody is expected to recognise three reported isoforms ( NP\_079535.3 ; NP\_751897.1; NP\_002432.1); Reported variants NP\_751898.1 and NP\_002432.1 represent identical protein.

### Immunogen

Peptide with sequence GDLHCEIRDQET, from the internal region of the protein sequence according to NP\_079535.3 ; NP\_751897.1; NP\_002432.1.

Please note the [peptide](#) is available for sale.

### Purification and Storage

Purified from goat serum by ammonium sulphate precipitation followed by antigen affinity chromatography using the immunizing peptide.

Supplied at 0.5 mg/ml in Tris saline, 0.02% sodium azide, pH7.3 with 0.5% bovine serum albumin.

Aliquot and store at -20°C. Minimize freezing and thawing.

### Applications Tested

**Peptide ELISA:** antibody detection limit dilution 1:64000.

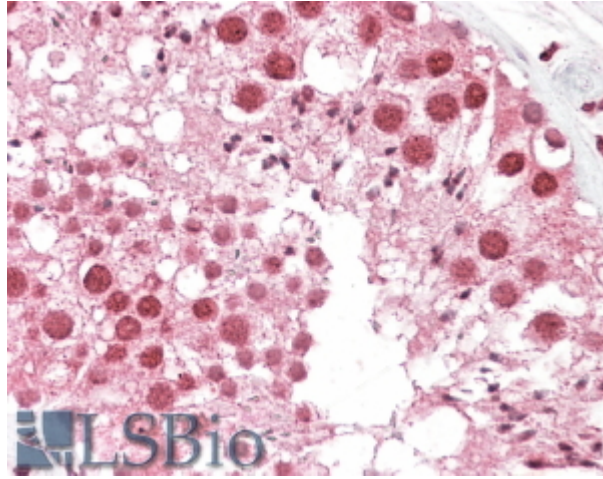
**Western blot:** Preliminary experiments gave an approx 38kDa band in Human Testis, Tonsil and Thymus lysates after 0.1µg/ml antibody staining. Please note that currently we cannot find an explanation in the literature for the band we observe given the calculated size of 92.9kDa according to the smallest reported isoform NP\_002432.1. The 38kDa band was successfully blocked by incubation with the immunizing peptide.

**IHC:** Paraffin embedded Human Testis and Thymus. Recommended concentration: 2.5-3.75µg/ml.

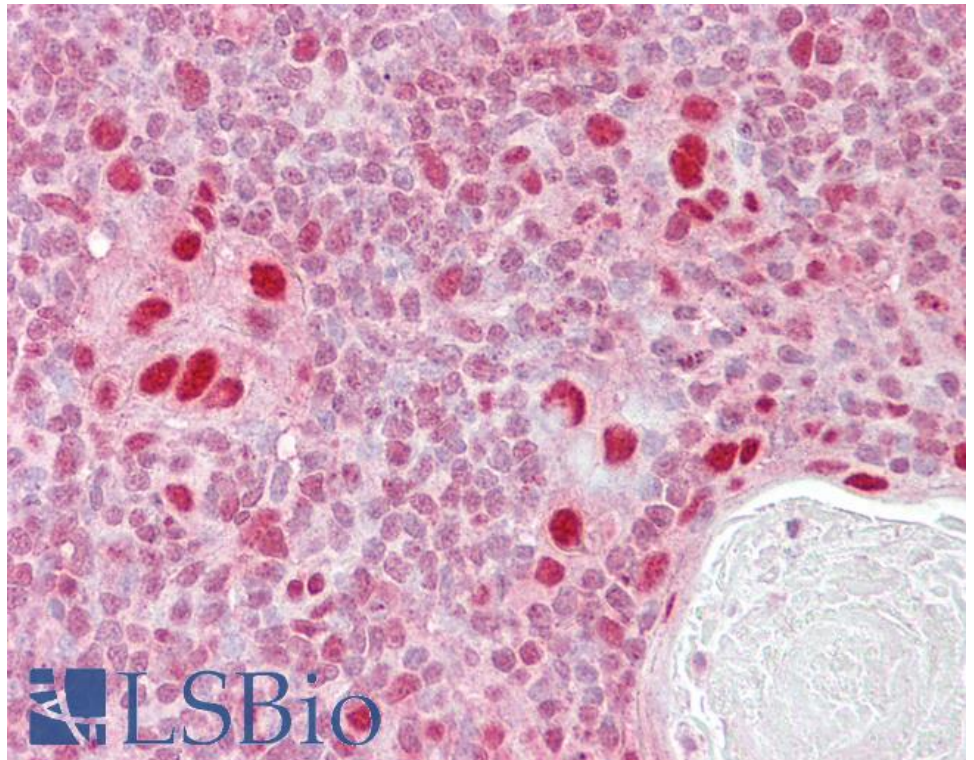
### Species Reactivity

**Tested:** Human

**Expected from sequence similarity:** Human, Mouse, Rat



EB08335 (2.5µg/ml) staining of paraffin embedded Human Testis. Steamed antigen retrieval with citrate buffer pH 6, AP-staining.



EB08335 (2.5µg/ml) staining of paraffin embedded Human Thymus. Steamed antigen retrieval with citrate buffer pH 6, AP-staining.