



UK Office

Everest Biotech Ltd

Cherwell Innovation Centre
77 Heyford Park
Upper Heyford
Oxfordshire
OX25 5HD
UK

Enquiries:

info@everestbiotech.com

Sales:

sales@everestbiotech.com

Tech support:

support@everestbiotech.com

Tel: +44 (0)1869 238326

www.everestbiotech.com

**Research Use Only. Not for
diagnostic or therapeutic use.**

EB12531 - Goat Anti-MSI2 / musashi-2 (aa33-43) Antibody

Size: 100µg specific antibody in 200µl



Target Protein

Principal Names: MSI2, musashi RNA-binding protein 2, MSI2H, RNA-binding protein Musashi homolog 2, musashi homolog 2, musashi-2

Official Symbol: MSI2

Accession Number(s): NP_620412.1; NP_733839.1

Human GeneID(s): [124540](#)

Non-Human GeneID(s): 76626 (mouse)

Important Comments: This antibody is expected to recognize both reported isoforms (NP_620412.1; NP_733839.1).

Immunogen

Peptide with sequence C-SPDSLRLDYFSK, from the internal region of the protein sequence according to NP_620412.1; NP_733839.1.

Please note the [peptide](#) is available for sale.

Purification and Storage

Purified from goat serum by ammonium sulphate precipitation followed by antigen affinity chromatography using the immunizing peptide.

Supplied at 0.5 mg/ml in Tris saline, 0.02% sodium azide, pH7.3 with 0.5% bovine serum albumin.

Aliquot and store at -20°C. Minimize freezing and thawing.

Applications Tested

Peptide ELISA: antibody detection limit dilution 1:128000.

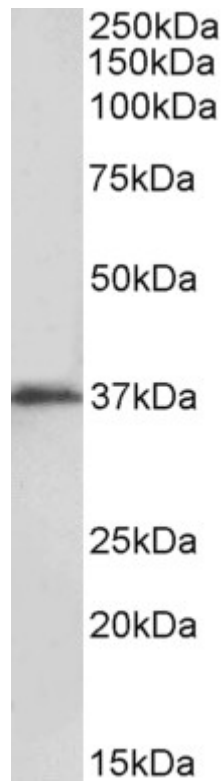
Western blot: Approx 37kDa band observed in lysates of cell line Kelly (calculated MW of 35.2kDa according to NP_620412.1). Recommended concentration: 0.1-0.3µg/ml. Approx 37+39kDa bands observed in fetal Mouse Brain lysates (calculated MW of 36.9kDa according to Mouse NP_473384.1). This molecular weight is routinely observed by other sources. Recommended concentration: 0.3-1µg/ml. Primary incubation was 1 hour.

IHC: Paraffin embedded Human Adrenal Gland. Recommended concentration: 5µg/ml.

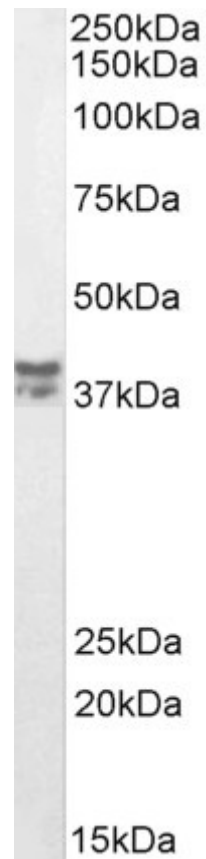
Species Reactivity

Tested: Human, Mouse

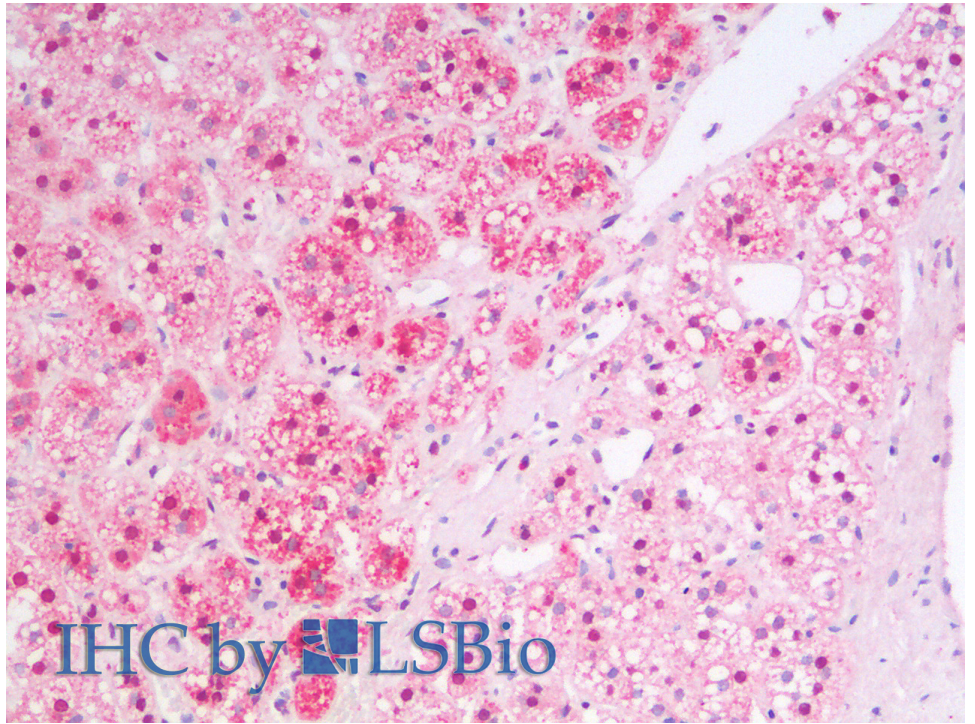
Expected from sequence similarity: Human, Mouse, Cow



EB12531 (0.1µg/ml) staining of Kelly lysate (35µg protein in RIPA buffer). Detected by chemiluminescence.



EB12531 (0.3µg/ml) staining of fetal Mouse Brain lysate (35µg protein in RIPA buffer). Detected by chemiluminescence.



EB12531 (5µg/ml) staining of paraffin embedded Human Adrenal Gland. Steamed antigen retrieval with citrate buffer pH 6, AP-staining.