



## UK Office

### Everest Biotech Ltd

Cherwell Innovation Centre  
77 Heyford Park  
Upper Heyford  
Oxfordshire  
OX25 5HD  
UK

Enquiries:

[info@everestbiotech.com](mailto:info@everestbiotech.com)

Sales:

[sales@everestbiotech.com](mailto:sales@everestbiotech.com)

Tech support:

[support@everestbiotech.com](mailto:support@everestbiotech.com)

Tel: +44 (0)1869 238326

Fax: +44 (0)1869 238327

## US Office

### Everest Biotech c/o Abcore

405 Maple Street, Suite A106  
Ramona,  
CA 92065  
USA

Inquiries:

[info@everestbiotech.com](mailto:info@everestbiotech.com)

Sales:

[usasales@everestbiotech.com](mailto:usasales@everestbiotech.com)

Tech support:

[support@everestbiotech.com](mailto:support@everestbiotech.com)

Tel: 888-320-4628 (toll-free)

Fax: 888-841-9041

[www.everestbiotech.com](http://www.everestbiotech.com)

**Research Use Only. Not for  
diagnostic or therapeutic use.**

## EB12531 - Goat Anti-MSI2 / musashi-2 (aa33-43) Antibody

Size: 100µg specific antibody in 200µl



### Target Protein

**Principal Names:** MSI2, musashi RNA-binding protein 2, MSI2H, RNA-binding protein  
Musashi homolog 2, musashi homolog 2, musashi-2

**Official Symbol:** MSI2

**Accession Number(s):** NP\_620412.1; NP\_733839.1

**Human GeneID(s):** [124540](#)

**Non-Human GeneID(s):** 76626 (mouse)

**Important Comments:** This antibody is expected to recognize both reported isoforms  
(NP\_620412.1; NP\_733839.1).

### Immunogen

Peptide with sequence C-SPDSLRLDYFSK, from the internal region of the protein  
sequence according to NP\_620412.1; NP\_733839.1.

Please note the [peptide](#) is available for sale.

### Purification and Storage

Purified from goat serum by ammonium sulphate precipitation followed by antigen affinity  
chromatography using the immunizing peptide.

Supplied at 0.5 mg/ml in Tris saline, 0.02% sodium azide, pH7.3 with 0.5% bovine serum  
albumin.

Aliquot and store at -20°C. Minimize freezing and thawing.

### Applications Tested

**Peptide ELISA:** antibody detection limit dilution 1:128000.

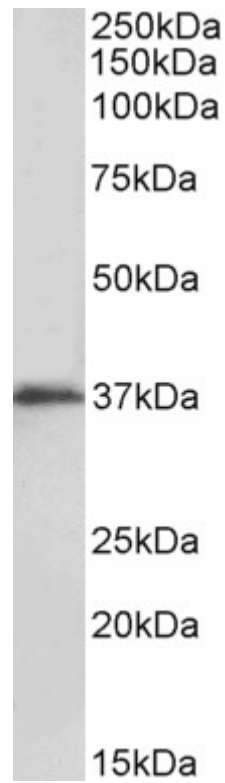
**Western blot:** Approx 37kDa band observed in lysates of cell line Kelly (calculated MW of  
35.2kDa according to NP\_620412.1). Recommended concentration: 0.1-0.3µg/ml. Approx  
37+39kDa bands observed in fetal Mouse Brain lysates (calculated MW of 36.9kDa  
according to Mouse NP\_473384.1). This molecular weight is routinely observed by other  
sources. Recommended concentration: 0.3-1µg/ml. Primary incubation was 1 hour.

**IHC:** Paraffin embedded Human Adrenal Gland. Recommended concentration: 5µg/ml.

### Species Reactivity

**Tested:** Human, Mouse

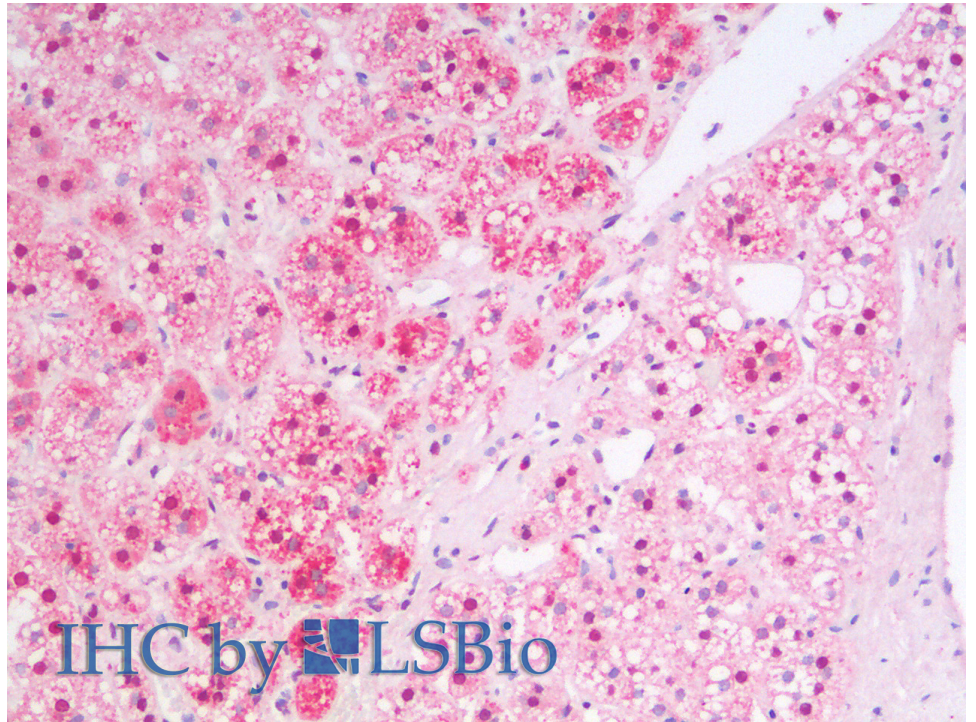
**Expected from sequence similarity:** Human, Mouse, Cow



EB12531 (0.1 µg/ml) staining of Kelly lysate (35 µg protein in RIPA buffer). Detected by chemiluminescence.



EB12531 (0.3 µg/ml) staining of fetal Mouse Brain lysate (35 µg protein in RIPA buffer). Detected by chemiluminescence.



EB12531 (5µg/ml) staining of paraffin embedded Human Adrenal Gland. Steamed antigen retrieval with citrate buffer pH 6, AP-staining.