



UK Office

Everest Biotech Ltd

Cherwell Innovation Centre
77 Heyford Park
Upper Heyford
Oxfordshire
OX25 5HD
UK

Enquiries:

info@everestbiotech.com

Sales:

sales@everestbiotech.com

Tech support:

support@everestbiotech.com

Tel: +44 (0)1869 238326

Fax: +44 (0)1869 238327

US Office

Everest Biotech c/o Abcore

405 Maple Street, Suite A106
Ramona,
CA 92065
USA

Inquiries:

info@everestbiotech.com

Sales:

usasales@everestbiotech.com

Tech support:

support@everestbiotech.com

Tel: 888-320-4628 (toll-free)

Fax: 888-841-9041

www.everestbiotech.com

**Research Use Only. Not for
diagnostic or therapeutic use.**

EB11363 - Goat Anti-MST2 / STK3 Antibody

Size: 100µg specific antibody in 200µl



Target Protein

Principal Names: FLJ90748, KRS1, MST2, serine/threonine kinase 3 (STE20 homolog, yeast), serine/threonine kinase 3 (Ste20, yeast homolog), STK3

Official Symbol: STK3

Accession Number(s): NP_006272.2

Human GeneID(s): [6788](#)

Non-Human GeneID(s): 56274 (mouse), 65189 (rat)

Important Comments: This antibody is not expected to cross-react to STK4

Immunogen

Peptide with sequence DFKNKSHENCNQN, from the internal region of the protein sequence according to NP_006272.2.

Please note the [peptide](#) is available for sale.

Purification and Storage

Purified from goat serum by ammonium sulphate precipitation followed by antigen affinity chromatography using the immunizing peptide.

Supplied at 0.5 mg/ml in Tris saline, 0.02% sodium azide, pH7.3 with 0.5% bovine serum albumin.

Aliquot and store at -20°C. Minimize freezing and thawing.

Applications Tested

Peptide ELISA: antibody detection limit dilution 1:16000.

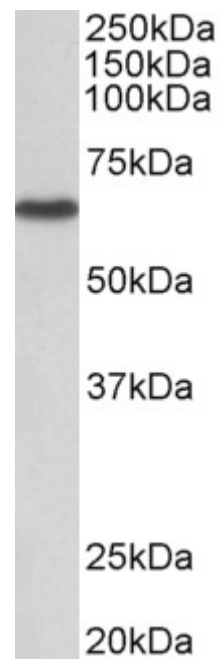
Western blot: Approx 65kDa band observed in lysates of cell lines A431 and NIH3T3 (calculated MW of 56.3kDa according to Human NP_006272.2 and 56.8kDa according to Mouse NP_062609.2). This molecular weight is routinely observed by other sources.

Recommended concentration: 1-3µg/ml.

Species Reactivity

Tested: Human, Mouse

Expected from sequence similarity: Human, Mouse, Rat, Dog, Pig, Cow



EB11363 (1 μ g/ml) staining of NIH3T3 lysate (35 μ g protein in RIPA buffer). Primary incubation was 1 hour.
Detected by chemiluminescence.