



## UK Office

### Everest Biotech Ltd

Cherwell Innovation Centre  
77 Heyford Park  
Upper Heyford  
Oxfordshire  
OX25 5HD  
UK

Enquiries:

[info@everestbiotech.com](mailto:info@everestbiotech.com)

Sales:

[sales@everestbiotech.com](mailto:sales@everestbiotech.com)

Tech support:

[support@everestbiotech.com](mailto:support@everestbiotech.com)

Tel: +44 (0)1869 238326

[www.everestbiotech.com](http://www.everestbiotech.com)

**Research Use Only. Not for  
diagnostic or therapeutic use.**

## EB12462 - Goat Anti-MT-ATP6 Antibody

Size: 100µg specific antibody in 200µl



### Target Protein

**Principal Names:** ATP6, MT-ATP6, ATPase6, MTATP6

**Official Symbol:** MT-ATP6

**Accession Number(s):** YP\_003024031.1

**Human GeneID(s):** [4508](#)

### Immunogen

Peptide with sequence C-PTSKYLINNRLITTQ, from the internal region of the protein sequence according to YP\_003024031.1.

Please note the [peptide](#) is available for sale.

### Purification and Storage

Purified from goat serum by ammonium sulphate precipitation followed by antigen affinity chromatography using the immunizing peptide.

Supplied at 0.5 mg/ml in Tris saline, 0.02% sodium azide, pH7.3 with 0.5% bovine serum albumin.

Aliquot and store at -20°C. Minimize freezing and thawing.

### Applications Tested

**Peptide ELISA:** antibody detection limit dilution 1:64000.

**Western blot:** Approx 26kDa band observed in Human Heart, Colon and Ileum lysates (calculated MW of 24.8kDa according to YP\_003024031.1). Recommended concentration: 0.1-0.3µg/ml. Primary incubation was 1 hour.

### Species Reactivity

**Tested:** Human

**Expected from sequence similarity:** Human

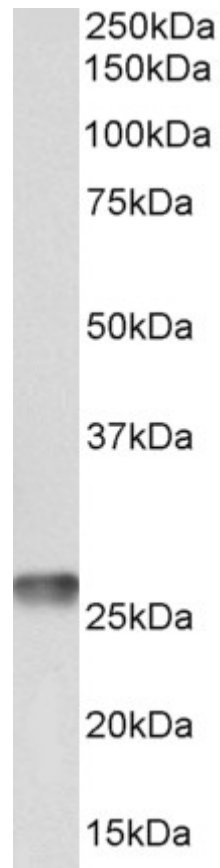
### Specific Reference

**This antibody has been successfully used in SDS-Page on Human:**

Laura Kytövuori, Joonas Lipponen, Harri Rusanen, Tuomas Komulainen, Mika H Martikainen, Kari Majamaa

A novel mutation m.8561C>G in MT-ATP6/8 causing a mitochondrial syndrome with ataxia, peripheral neuropathy, diabetes mellitus, and hypergonadotropic hypogonadism  
J Neurol. 2016 Nov;263(11):2188-2195. doi: 10.1007/s00415-016-8249-2. Epub 2016 Aug 8.

PMID: 27502083



EB12462 (0.1 $\mu$ g/ml) staining of Human Heart lysate (35 $\mu$ g protein in RIPA buffer). Detected by chemiluminescence.