

## UK Office

### Everest Biotech Ltd

Cherwell Innovation Centre  
77 Heyford Park  
Upper Heyford  
Oxfordshire  
OX25 5HD  
UK

Enquiries:

[info@everestbiotech.com](mailto:info@everestbiotech.com)

Sales:

[sales@everestbiotech.com](mailto:sales@everestbiotech.com)

Tech support:

[support@everestbiotech.com](mailto:support@everestbiotech.com)

Tel: +44 (0)1869 238326

[www.everestbiotech.com](http://www.everestbiotech.com)

**Research Use Only. Not for  
diagnostic or therapeutic use.**

## EB10910 - Goat Anti-MTHFD1L (aa535-538) Antibody

Size: 100µg specific antibody in 200µl



### Target Protein

**Principal Names:** MTHFD1L, methylenetetrahydrofolate dehydrogenase (NADP+ dependent) 1-like, DKFZp586G1517, FLJ21145, FTHFSDC1, MTC1THFS, dJ292B18.2, 10-formyl-THF synthetase, formyltetrahydrofolate synthetase domain containing 1

**Official Symbol:** MTHFD1L

**Accession Number(s):** NP\_056255.2

**Human GeneID(s):** [25902](#)

**Non-Human GeneID(s):** 270685 (mouse), 361472 (rat)

### Immunogen

Peptide with sequence C-DTNRFLRKITIGQ, from the internal region of the protein sequence according to NP\_056255.2.

Please note the [peptide](#) is available for sale.

### Purification and Storage

Purified from goat serum by ammonium sulphate precipitation followed by antigen affinity chromatography using the immunizing peptide.

Supplied at 0.5 mg/ml in Tris saline, 0.02% sodium azide, pH7.3 with 0.5% bovine serum albumin.

Aliquot and store at -20°C. Minimize freezing and thawing.

### Applications Tested

**Peptide ELISA:** antibody detection limit dilution 1:32000.

**Western blot:** Approx 110kDa band observed in Human Brain (Cerebellum) (calculated MW of 106kDa according to NP\_056255.2). The same band is observed in lysates of cell line NIH3T3, Mouse Brain and Rat Brain. Recommended concentration: 0.1-0.3µg/ml. Primary incubation was 1 hour. Preliminary testing was unsuccessful on Pig for this particular batch.

**IHC:** Paraffin embedded Human Kidney. Recommended concentration: 5µg/ml.

**Additional validation:** This antibody has been successfully used in the following paper: Sikorski et al. (2018) PMID: 30377371.

### Species Reactivity

**Tested:** Human, Mouse, Rat

**Expected from sequence similarity:** Human, Mouse, Rat, Dog, Pig, Cow

### Specific Reference

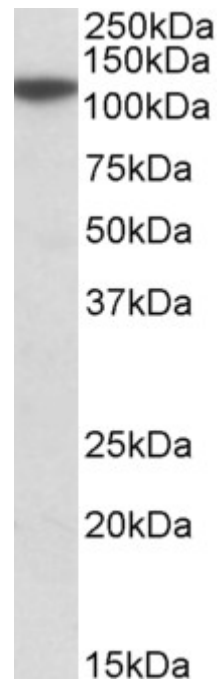
**This antibody has been successfully used in the following paper:**

Krzysztof Sikorski, Adi Mehta, Marit Inngjerdingen, Flourina Thakor, Simon Kling, Tomas Kalina, Tuula A. Nyman, Maria Ekman Stensland, Wei Zhou, Gustavo A. De Souza, Lars Holden, Jan Stuchly, Markus Templin and Fridtjof Lund-Johansen

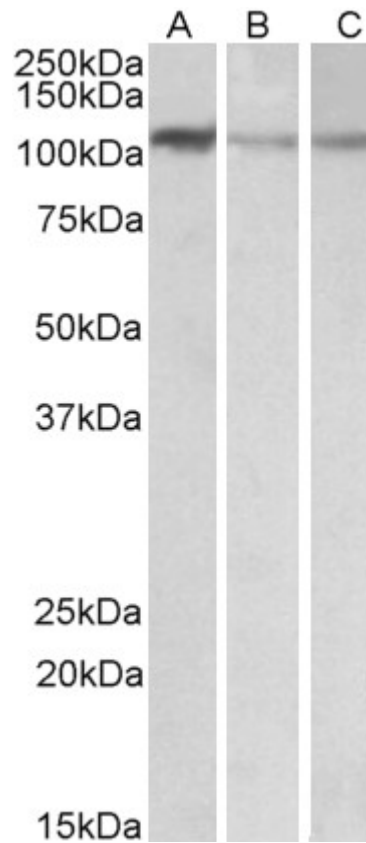
A high-throughput pipeline for validation of antibodies

Nat Methods. 2018 Nov;15(11):909-912

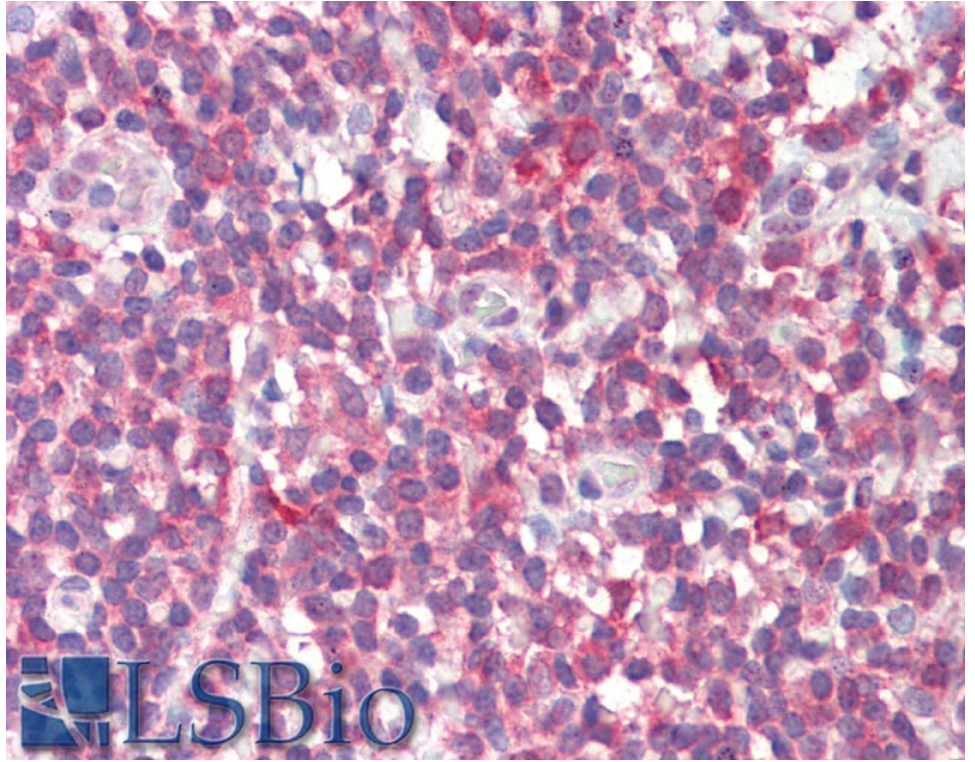
PMID: 30377371



EB10910 (0.1µg/ml) staining of Human Cerebellum lysate (35µg protein in RIPA buffer). Detected by chemiluminescence.



EB10910 (0.1µg/ml) staining of NIH3T3 (A), Mouse Brain (B) and Rat Brain (C) lysates (35µg protein in RIPA buffer). Detected by chemiluminescence.



EB10910 (5µg/ml) staining of paraffin embedded Human Tonsil. Steamed antigen retrieval with citrate buffer pH 6, AP-staining.