



UK Office

Everest Biotech Ltd

Cherwell Innovation Centre
77 Heyford Park
Upper Heyford
Oxfordshire
OX25 5HD
UK

Enquiries:

info@everestbiotech.com

Sales:

sales@everestbiotech.com

Tech support:

support@everestbiotech.com

Tel: +44 (0)1869 238326

Fax: +44 (0)1869 238327

US Office

Everest Biotech c/o Abcore

405 Maple Street, Suite A106
Ramona,
CA 92065
USA

Inquiries:

info@everestbiotech.com

Sales:

usasales@everestbiotech.com

Tech support:

support@everestbiotech.com

Tel: 888-320-4628 (toll-free)

Fax: 888-841-9041

www.everestbiotech.com

**Research Use Only. Not for
diagnostic or therapeutic use.**

EB09354 - Goat Anti-MTHFR Antibody

Size: 100µg specific antibody in 200µl



Target Protein

Principal Names: MTHFR, 5,10-methylenetetrahydrofolate reductase (NADPH), OTTHUMP00000002367, OTTHUMP00000002368, methylenetetrahydrofolate reductase intermediate form

Official Symbol: MTHFR

Accession Number(s): NP_005948.3

Human GeneID(s): [4524](#)

Immunogen

Peptide with sequence C-NRPTQNARETEAP, from the C Terminus of the protein sequence according to NP_005948.3.

Please note the [peptide](#) is available for sale.

Purification and Storage

Purified from goat serum by ammonium sulphate precipitation followed by antigen affinity chromatography using the immunizing peptide.

Supplied at 0.5 mg/ml in Tris saline, 0.02% sodium azide, pH7.3 with 0.5% bovine serum albumin.

Aliquot and store at -20°C. Minimize freezing and thawing.

Applications Tested

Peptide ELISA: antibody detection limit dilution 1:16000.

Western blot: Preliminary experiments gave an approx 28kDa band in Human Brain (Cerebellum), Skeletal Muscle and Placenta lysates after 0.2µg/ml antibody staining.

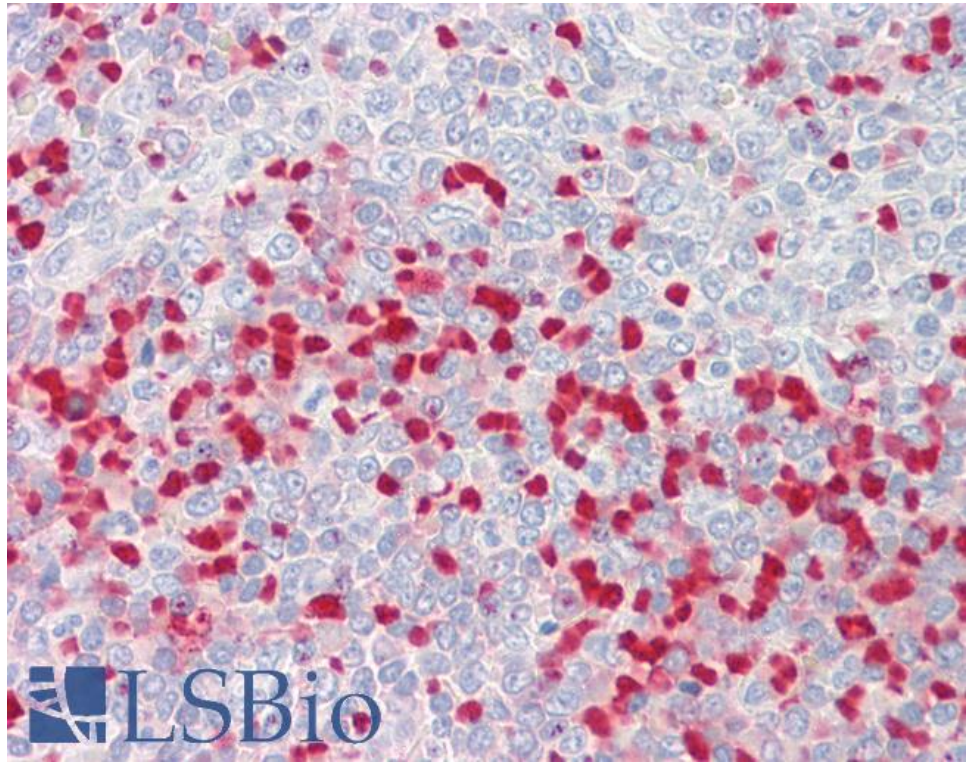
Please note that currently we cannot find an explanation in the literature for the band we observe given the calculated size of 74.6kDa according to NP_005948.3. The 28kDa band was successfully blocked by incubation with the immunizing peptide.

IHC: Paraffin embedded Human Spleen. Recommended concentration: 3.75µg/ml.

Species Reactivity

Tested: Human

Expected from sequence similarity: Human



EB09354 (3.75µg/ml) staining of paraffin embedded Human Spleen. Steamed antigen retrieval with citrate buffer pH 6, AP-staining.