



Everest Biotech Ltd
Cherwell Innovation Centre
77 Heyford Park
Upper Heyford
Oxfordshire
OX25 5HD, United Kingdom

everestbiotech.com

sales@everestbiotech.com

support@everestbiotech.com

Tel +44 1869 238326

Fax +44 1869 238327

Research Use Only. Not for diagnostic or therapeutic use.

Storage: For long-term storage keep aliquots at -20°C. (Store no longer than 12 months at 4°C). Minimize freezing and thawing.

EB05195 - Goat Anti-MTM1 Antibody

Size: 100µg specific antibody in 200µl



Target Protein

Principal Names: myotubularin 1, myotubularin, XLMTM, MTMX, CNM, myotubular myopathy 1, MTM1

Official Symbol: MTM1

Accession Number(s): NP_000243.1

Human GeneID(s): [4534](#)

Immunogen

Peptide with sequence C-SSPSQMMPHVQTHF, from the C Terminus of the protein sequence according to NP_000243.1.

Please note the [peptide](#) is available for sale.

Purification and Storage

Purified from goat serum by ammonium sulphate precipitation followed by antigen affinity chromatography using the immunizing peptide.

Supplied at 0.5 mg/ml in Tris saline, 0.02% sodium azide, pH7.3 with 0.5% bovine serum albumin.

Aliquot and store at -20°C. Minimize freezing and thawing.

Applications Tested

Peptide ELISA: antibody detection limit dilution 1:16000.

Western blot: Approx 70kDa band observed in lysates of Human Muscle and of cell line HepG2 (calculated MW of 69.9kDa according to NP_000243.1). In transfected HEK293 transiently expressing MTM1 a band of approx. 65kDa is observed. This band is not observed in the non-transfected

Species Reactivity

Tested: Human

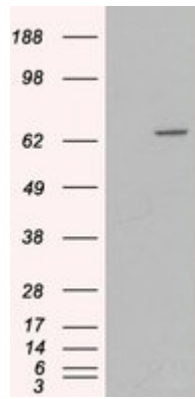
Expected from sequence similarity: Human, Cow

Background Reference

Laporte J, Hu LJ, Kretz C, Mandel JL, Kioschis P, Coy JF, Klauck SM, Poustka A, Dahl N. A gene mutated in X-linked myotubular myopathy defines a new putative tyrosine phosphatase family conserved in yeast.

Nat Genet. 1996 Jun;13(2):175-82.

PMID: 8640223



HEK293 overexpressing MTM1 (RC205306) and probed with EB05195 (mock transfection in first lane), tested by Origene.



EB05195 (0.3µg/ml) staining of HepG2 lysate (35µg protein in RIPA buffer). Primary incubation was 1 hour. Detected by chemiluminescence.