



## UK Office

### Everest Biotech Ltd

Cherwell Innovation Centre  
77 Heyford Park  
Upper Heyford  
Oxfordshire  
OX25 5HD  
UK

Enquiries:

[info@everestbiotech.com](mailto:info@everestbiotech.com)

Sales:

[sales@everestbiotech.com](mailto:sales@everestbiotech.com)

Tech support:

[support@everestbiotech.com](mailto:support@everestbiotech.com)

Tel: +44 (0)1869 238326

[www.everestbiotech.com](http://www.everestbiotech.com)

**Research Use Only. Not for  
diagnostic or therapeutic use.**

## EB09288 - Goat Anti-MTNR1A Antibody

Size: 100µg specific antibody in 200µl



### Target Protein

**Principal Names:** MTNR1A, melatonin receptor 1A, MEL-1A-R, MT1, melatonin receptor type 1A

**Official Symbol:** MTNR1A

**Accession Number(s):** NP\_005949.1

**Human GeneID(s):** [4543](#)

### Immunogen

Peptide with sequence C-SLKYDKLYSSKNS, from the internal region of the protein sequence according to NP\_005949.1.

Please note the [peptide](#) is available for sale.

### Purification and Storage

Purified from goat serum by ammonium sulphate precipitation followed by antigen affinity chromatography using the immunizing peptide.

Supplied at 0.5 mg/ml in Tris saline, 0.02% sodium azide, pH7.3 with 0.5% bovine serum albumin.

Aliquot and store at -20°C. Minimize freezing and thawing.

### Applications Tested

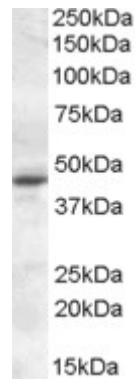
**Peptide ELISA:** antibody detection limit dilution 1:16000.

**Western blot:** Approx 40kDa band observed in Rat Retina lysates (calculated MW of 39.8kDa according to Rat NP\_446128.1). Recommended concentration: 0.1-0.3µg/ml. An additional band of unknown identity was also consistently observed at 50kDa. This band was successfully blocked by incubation with the immunizing peptide.

### Species Reactivity

**Tested:** Rat

**Expected from sequence similarity:** Human, Mouse, Dog, Cow



EB09288 (0.1 µg/ml) staining of Rat Retina lysate (35 µg protein in RIPA buffer). Primary incubation was 1 hour.  
Detected by chemiluminescence.