



UK Office

Everest Biotech Ltd

Cherwell Innovation Centre
77 Heyford Park
Upper Heyford
Oxfordshire
OX25 5HD
UK

Enquiries:

info@everestbiotech.com

Sales:

sales@everestbiotech.com

Tech support:

support@everestbiotech.com

Tel: +44 (0)1869 238326

Fax: +44 (0)1869 238327

US Office

Everest Biotech c/o Abcore

405 Maple Street, Suite A106
Ramona,
CA 92065
USA

Inquiries:

info@everestbiotech.com

Sales:

usasales@everestbiotech.com

Tech support:

support@everestbiotech.com

Tel: 888-320-4628 (toll-free)

Fax: 888-841-9041

www.everestbiotech.com

**Research Use Only. Not for
diagnostic or therapeutic use.**

EB10617 - Goat Anti-Mucin 10 / Prol1 Antibody

Size: 100µg specific antibody in 200µl



Target Protein

Principal Names: Prol1, proline rich, lacrimal 1, Muc10, mucin 10, mucin 10, submandibular gland salivary mucin

Official Symbol: Prol1

Accession Number(s): NP_032670.2

Non-Human GeneID(s): 17830 (mouse)

Immunogen

Peptide with sequence C-QFPVRKYLEDPY, from the internal region of the protein sequence according to NP_032670.2.

Please note the [peptide](#) is available for sale.

Purification and Storage

Purified from goat serum by ammonium sulphate precipitation followed by antigen affinity chromatography using the immunizing peptide.

Supplied at 0.5 mg/ml in Tris saline, 0.02% sodium azide, pH7.3 with 0.5% bovine serum albumin.

Aliquot and store at -20°C. Minimize freezing and thawing.

Applications Tested

Peptide ELISA: antibody detection limit dilution 1:32000.

Western blot: This antibody has been successfully used in WB on Mouse: Peluso G et al. (2019) J Biol Chem. 2019 Dec 27. pii: jbc.RA119.009807. PMID: 31882545.

IHC: Positive staining in the submandibular salivary gland of the mouse, while cells remain negative in the sublingual salivary gland. Data provided by Everest Grant winner Melinda Larsen State University of New York, Albany, NY. A publication from this author includes the use of this antibody: Nelson et al, Biol Open. 2013 Apr 18;2(5):439-47, PMID: 23789091. This antibody has been successfully used in IHC on Mouse, PMID: 37838739.

Immunofluorescence: This antibody has been successfully used in IF on Mouse: Vaishali N Patel et al. (2021) PMID: 34653670, and Peluso G et al. (2019) PMID: 31882545.

Immunoprecipitation: This antibody has been successfully used in IP on Mouse: Peluso G et al. (2019) J Biol Chem. 2019 Dec 27. pii: jbc.RA119.009807. PMID: 31882545.

Species Reactivity

Tested: Mouse

Expected from sequence similarity: Mouse

Specific References

This antibody has been successfully used in IHC on Mouse:

Marit H. Aure, Jennifer M. Symonds, Carlos U. Villapudua, Joshua T. Dodge, Sabine Werner, Wendy M. Knosp & Matthew P. Hoffman

FGFR2 is essential for salivary gland duct homeostasis and MAPK-dependent seromucous acinar cell differentiation.

Nat Commun. 2023 Oct 14;14(1):6485.

PMID: 37838739

This antibody has been successfully used in the following paper:

Alison J. May et al.

Neuronal-epithelial cross-talk drives acinar specification via NRG1-ERBB3-mTORC2 signaling.

Developmental Cell 57, 2550-2565 (2022)

PMID: 36413949

This antibody has been successfully used in IF on Mouse:

Vaishali N Patel et al.

Loss of Hs3st3a1 or Hs3st3b1 enzymes alters heparan sulfate to reduce epithelial morphogenesis and adult salivary gland function.

Matrix Biol. 2021 Sep;103-104:37-57.

PMID: 34653670

This antibody has been successfully used in WB, IF and IP on Mouse:

Peluso G, Tian E, Abusleme L, Munemasa T, Mukaibo T, Ten Hagen KG

Loss of the disease-associated glycosyltransferase Galnt3 alters Muc10 glycosylation and the composition of the oral microbiome.

J Biol Chem. 2019 Dec 27. pii: jbc.RA119.009807

PMID: 31882545

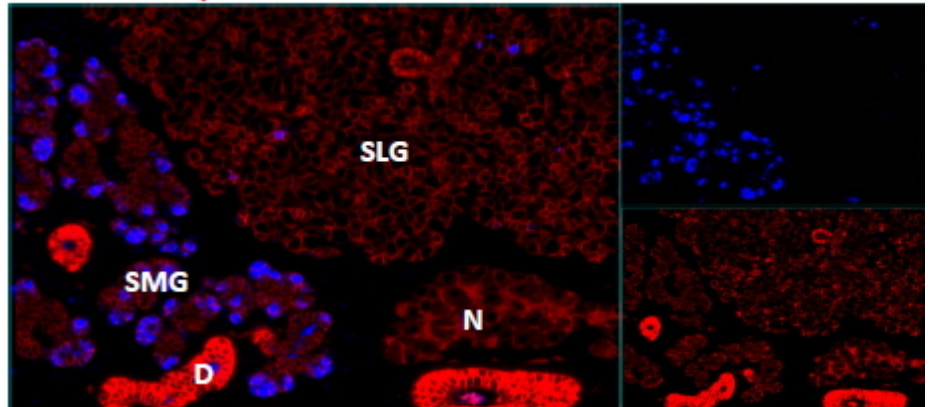
This antibody has been successfully used in IHC on Mouse:

Nelson DA, Manhardt C, Kamath V, Sui Y, Santamaria-Pang A, Can A, Bello M, Corwin A, Dinn SR, Lazare M, Gervais EM, Sequeira SJ, Peters SB, Ginty F, Gerdes MJ, Larsen M. Quantitative single cell analysis of cell population dynamics during submandibular salivary gland development and differentiation.

Biol Open. 2013 Apr 18;2(5):439-47.

PMID: 23789091

MUC10 Na/K-ATPase



EB10617 (2.9ug/ml) staining of cells in the submandibular salivary gland (SMG), but not in the sublingual salivary gland (SLG) in mouse.