



## UK Office

### Everest Biotech Ltd

Cherwell Innovation Centre  
77 Heyford Park  
Upper Heyford  
Oxfordshire  
OX25 5HD  
UK

Enquiries:

[info@everestbiotech.com](mailto:info@everestbiotech.com)

Sales:

[sales@everestbiotech.com](mailto:sales@everestbiotech.com)

Tech support:

[support@everestbiotech.com](mailto:support@everestbiotech.com)

Tel: +44 (0)1869 238326

Fax: +44 (0)1869 238327

## US Office

### Everest Biotech c/o Abcore

405 Maple Street, Suite A106  
Ramona,  
CA 92065  
USA

Inquiries:

[info@everestbiotech.com](mailto:info@everestbiotech.com)

Sales:

[usasales@everestbiotech.com](mailto:usasales@everestbiotech.com)

Tech support:

[support@everestbiotech.com](mailto:support@everestbiotech.com)

Tel: 888-320-4628 (toll-free)

Fax: 888-841-9041

[www.everestbiotech.com](http://www.everestbiotech.com)

**Research Use Only. Not for  
diagnostic or therapeutic use.**

## EB12334 - Goat Anti-MUNC18C Antibody

Size: 100µg specific antibody in 200µl



### Target Protein

**Principal Names:** STXBP3, syntaxin binding protein 3, MUNC18-3, MUNC18C, PSP, UNC-18C, platelet Sec1 protein, protein unc-18 homolog 3, protein unc-18 homolog C, syntaxin 4 binding protein, syntaxin-binding protein 3, unc18-3

**Official Symbol:** STXBP3

**Accession Number(s):** NP\_009200.2

**Human GeneID(s):** [6814](#)

**Non-Human GeneID(s):** 20912 (mouse), 114095 (rat)

### Immunogen

Peptide with sequence SKSIRRCKEINIS, from the internal region of the protein sequence according to NP\_009200.2.

Please note the [peptide](#) is available for sale.

### Purification and Storage

Purified from goat serum by ammonium sulphate precipitation followed by antigen affinity chromatography using the immunizing peptide.

Supplied at 0.5 mg/ml in Tris saline, 0.02% sodium azide, pH7.3 with 0.5% bovine serum albumin.

Aliquot and store at -20°C. Minimize freezing and thawing.

### Applications Tested

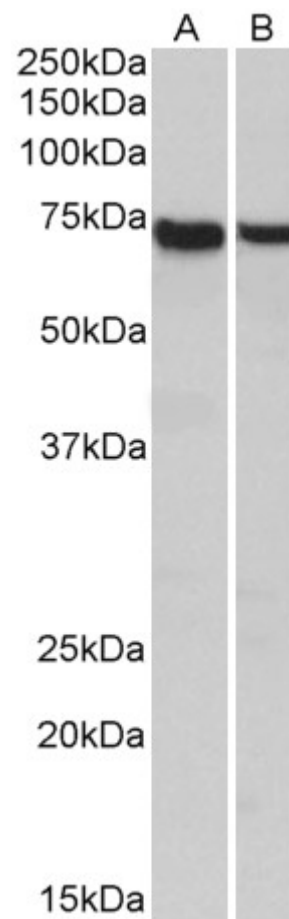
**Peptide ELISA:** antibody detection limit dilution 1:128000.

**Western blot:** Approx 70kDa band observed in Mouse and Rat Spleen lysates (calculated MW of 68.0kDa according to Rat NP\_446089.1). Recommended concentration: 0.3-1µg/ml.

### Species Reactivity

**Tested:** Mouse, Rat

**Expected from sequence similarity:** Human, Mouse, Rat, Dog, Pig



EB12334 (1µg/ml) staining of Mouse (A) and Rat (B) Spleen lysates (35µg protein in RIPA buffer). Primary incubation was 1 hour. Detected by chemiluminescence.