



## UK Office

### Everest Biotech Ltd

Cherwell Innovation Centre  
77 Heyford Park  
Upper Heyford  
Oxfordshire  
OX25 5HD  
UK

Enquiries:

[info@everestbiotech.com](mailto:info@everestbiotech.com)

Sales:

[sales@everestbiotech.com](mailto:sales@everestbiotech.com)

Tech support:

[support@everestbiotech.com](mailto:support@everestbiotech.com)

Tel: +44 (0)1869 238326

Fax: +44 (0)1869 238327

## US Office

### Everest Biotech c/o Abcore

405 Maple Street, Suite A106  
Ramona,  
CA 92065  
USA

Inquiries:

[info@everestbiotech.com](mailto:info@everestbiotech.com)

Sales:

[usasales@everestbiotech.com](mailto:usasales@everestbiotech.com)

Tech support:

[support@everestbiotech.com](mailto:support@everestbiotech.com)

Tel: 888-320-4628 (toll-free)

Fax: 888-841-9041

[www.everestbiotech.com](http://www.everestbiotech.com)

**Research Use Only. Not for  
diagnostic or therapeutic use.**

## EB07870 - Goat Anti-c-Myb (aa281-294) Antibody

Size: 100µg specific antibody in 200µl



### Target Protein

**Principal Names:** c-myb, MYB, v-myb myeloblastosis viral oncogene homolog (avian), c-myb\_CDS, efg, Avian myeloblastosis viral (v-myb) oncogene homolog, c-myb protein (140 AA), c-myb10A\_CDS, c-myb13A\_CDS, c-myb14A\_CDS, c-myb8B\_CDS, v-myb avian myeloblastosis viral oncogene homolog, v-myb myeloblastosis viral oncogene homolog

**Official Symbol:** MYB

**Accession Number(s):** NP\_001123645.1; NP\_005366.2; NP\_001123644.1; NP\_001155128.1; NP\_001155129.1; NP\_001155130.1; NP\_001155131.1

**Human GeneID(s):** [4602](#)

**Non-Human GeneID(s):** 17863 (mouse)

**Important Comments:** This antibody is expected to recognize isoforms 1-7 only (Numbering from NCBI RefSeq). (NP\_001123645.1; NP\_005366.2; NP\_001123644.1; NP\_001155128.1; NP\_001155129.1; NP\_001155130.1; NP\_001155131.1)

### Immunogen

Peptide with sequence C-QRHYNDEDPKEKR, from the internal region of the protein sequence according to NP\_001123645.1; NP\_005366.2; NP\_001123644.1; NP\_001155128.1; NP\_001155129.1; NP\_001155130.1; NP\_001155131.1.

Please note the [peptide](#) is available for sale.

### Purification and Storage

Purified from goat serum by ammonium sulphate precipitation followed by antigen affinity chromatography using the immunizing peptide.

Supplied at 0.5 mg/ml in Tris saline, 0.02% sodium azide, pH7.3 with 0.5% bovine serum albumin.

Aliquot and store at -20°C. Minimize freezing and thawing.

### Applications Tested

**Peptide ELISA:** antibody detection limit dilution 1:4000.

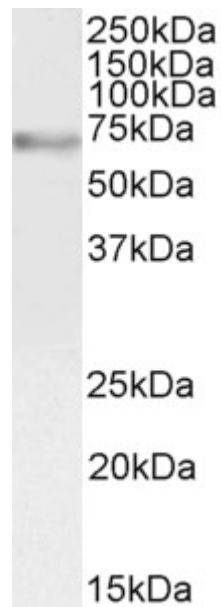
**Western blot:** Approx 70kDa band observed in lysates of cell line MOLT4 and in preliminary testing of Human Bone Marrow and Lymph Node lysate (calculated MW of 72.3kDa according to NP\_005366.2). Recommended concentration: 1-3µg/ml.

**IHC:** Paraffin embedded Human Kidney. Recommended concentration: 4µg/ml.

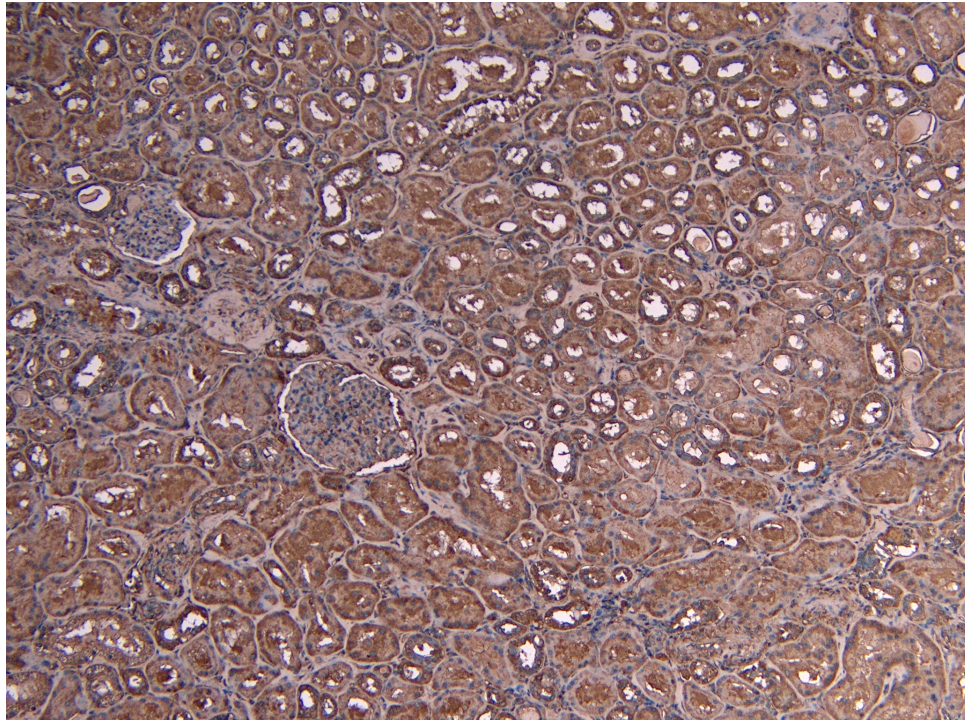
### Species Reactivity

**Tested:** Human

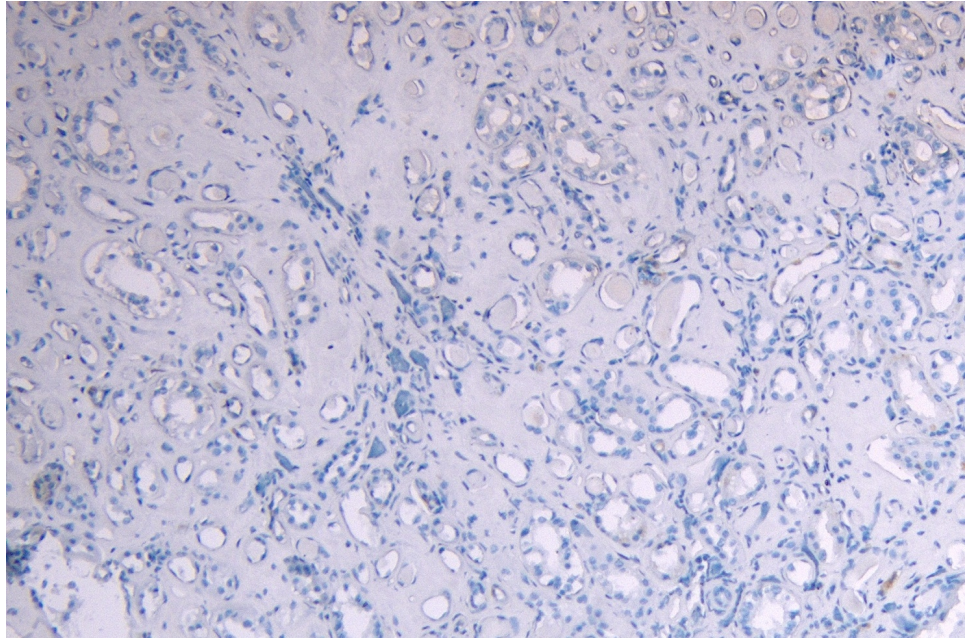
**Expected from sequence similarity:** Human, Mouse, Rat, Dog



EB07870 (2 $\mu$ g/ml) staining of MOLT4 cell lysate (35 $\mu$ g protein in RIPA buffer). Detected by chemiluminescence.



EB07870 (4 $\mu$ g/ml) staining of paraffin embedded Human Kidney. Heat induced antigen retrieval with citrate buffer pH 6, HRP-staining.



EB07870 Negative Control showing staining of paraffin embedded Human Kidney, with no primary antibody.