



UK Office

Everest Biotech Ltd

Cherwell Innovation Centre
77 Heyford Park
Upper Heyford
Oxfordshire
OX25 5HD
UK

Enquiries:

info@everestbiotech.com

Sales:

sales@everestbiotech.com

Tech support:

support@everestbiotech.com

Tel: +44 (0)1869 238326

Fax: +44 (0)1869 238327

US Office

Everest Biotech c/o Abcore

405 Maple Street, Suite A106
Ramona,
CA 92065
USA

Inquiries:

info@everestbiotech.com

Sales:

usasales@everestbiotech.com

Tech support:

support@everestbiotech.com

Tel: 888-320-4628 (toll-free)

Fax: 888-841-9041

www.everestbiotech.com

**Research Use Only. Not for
diagnostic or therapeutic use.**

EB07944 - Goat Anti-Myelin Protein zero Antibody

Size: 100µg specific antibody in 200µl



Target Protein

Principal Names: myelin protein zero, myelin protein zero (Charcot-Marie-Tooth neuropathy 1B), MPZ, CHM, CMT1, CMT1B, CMT2I, CMT2J, CMT4E, CMTDI3, DSS, HMSNIB, MPP, P0

Official Symbol: MPZ

Accession Number(s): NP_000521.1

Human GeneID(s): [4359](#)

Important Comments: The presence of this PNS protein in Rat Spinal Cord is likely due to contamination with spinal roots during extraction from the animal.

Immunogen

Peptide with sequence C-DHSRSTKAVSEK, from the internal region (near the C Terminus) of the protein sequence according to NP_000521.1.

Please note the [peptide](#) is available for sale.

Purification and Storage

Purified from goat serum by ammonium sulphate precipitation followed by antigen affinity chromatography using the immunizing peptide.

Supplied at 0.5 mg/ml in Tris saline, 0.02% sodium azide, pH7.3 with 0.5% bovine serum albumin.

Aliquot and store at -20°C. Minimize freezing and thawing.

Applications Tested

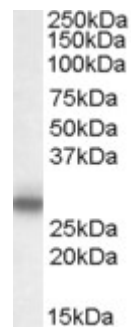
Peptide ELISA: antibody detection limit dilution 1:32000.

Western blot: Approx 28kDa band observed in Rat Spinal Cord lysates (calculated MW of 28.5kDa according to Human NP_000521.1 and of 27.7kDa according to Rat NP_058723.1). Recommended concentration: 0.1-0.3µg/ml.

Species Reactivity

Tested: Rat

Expected from sequence similarity: Human, Mouse, Rat, Dog



EB07944 (0.1µg/ml) staining of Rat Spinal Cord lysate (35µg protein in RIPA buffer). Primary incubation was 1 hour. Detected by chemiluminescence.