

## UK Office

### Everest Biotech Ltd

Cherwell Innovation Centre  
77 Heyford Park  
Upper Heyford  
Oxfordshire  
OX25 5HD  
UK

Enquiries:

[info@everestbiotech.com](mailto:info@everestbiotech.com)

Sales:

[sales@everestbiotech.com](mailto:sales@everestbiotech.com)

Tech support:

[support@everestbiotech.com](mailto:support@everestbiotech.com)

Tel: +44 (0)1869 238326

[www.everestbiotech.com](http://www.everestbiotech.com)

**Research Use Only. Not for  
diagnostic or therapeutic use.**

## EB07865 - Goat Anti-MYLK Antibody

Size: 100µg specific antibody in 200µl



### Target Protein

**Principal Names:** MYLK, myosin, light chain kinase, DKFZp686I10125, FLJ12216, KRP, MLCK, MLCK108, MLCK210, MSTP083, myosin light chain kinase, myosin, light polypeptide kinase

**Official Symbol:** MYLK

**Accession Number(s):** NP\_444253.3; NP\_444254.3 ; NP\_444255.3; NP\_444256.3

**Human GeneID(s):** [4638](#)

**Important Comments:** This antibody is expected to recognise all reported isoforms (NP\_444253.3; NP\_444254.3 ; NP\_444255.3 and NP\_444256.3).

### Immunogen

Peptide with sequence C-KDTKNMEAKKLSKD, from the internal region of the protein sequence according to NP\_444253.3; NP\_444254.3 ; NP\_444255.3; NP\_444256.3.

Please note the [peptide](#) is available for sale.

### Purification and Storage

Purified from goat serum by ammonium sulphate precipitation followed by antigen affinity chromatography using the immunizing peptide.

Supplied at 0.5 mg/ml in Tris saline, 0.02% sodium azide, pH7.3 with 0.5% bovine serum albumin.

Aliquot and store at -20°C. Minimize freezing and thawing.

### Applications Tested

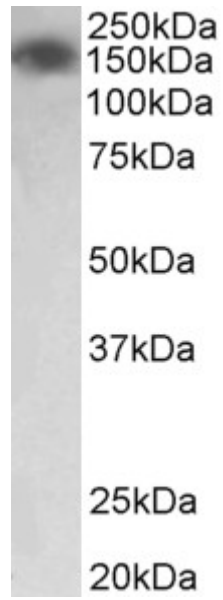
**Peptide ELISA:** antibody detection limit dilution 1:8000.

**Western blot:** Approx 150kDa band observed in Human Colon and Lung lysates (calculated MW of 197kDa according to NP\_444256.3). Recommended concentration: 0.01-0.03µg/ml.

### Species Reactivity

**Tested:** Human

**Expected from sequence similarity:** Human, Mouse,



EB07865 (0.03 $\mu$ g/ml) staining of Human Colon lysate (35 $\mu$ g protein in RIPA buffer). Primary incubation was 1 hour. Detected by chemiluminescence.