

## UK Office

### Everest Biotech Ltd

Cherwell Innovation Centre  
77 Heyford Park  
Upper Heyford  
Oxfordshire  
OX25 5HD  
UK

Enquiries:

[info@everestbiotech.com](mailto:info@everestbiotech.com)

Sales:

[sales@everestbiotech.com](mailto:sales@everestbiotech.com)

Tech support:

[support@everestbiotech.com](mailto:support@everestbiotech.com)

Tel: +44 (0)1869 238326

[www.everestbiotech.com](http://www.everestbiotech.com)

**Research Use Only. Not for  
diagnostic or therapeutic use.**

## EB10549 - Goat Anti-MYO1B Antibody

Size: 100µg specific antibody in 200µl



### Target Protein

**Principal Names:** MYO1B, myosin IB, myr1, MMI-alpha, MM1a, MYH-1c, MYO1B variant protein, OTTHUMP00000165861, myosin I alpha, myosin-lb

**Official Symbol:** MYO1B

**Accession Number(s):** NP\_001123630.1; NP\_036355.2

**Human GeneID(s):** [4430](#)

**Non-Human GeneID(s):** 17912 (mouse), 117057 (rat)

**Important Comments:** This antibody is expected to recognize both reported isoforms (NP\_001123630.1; NP\_036355.2). Reported variants represent identical protein: NP\_001123630.1, NP\_001155291.1.

### Immunogen

Peptide with sequence C-RTVEAKQEKVSTT, from the internal region of the protein sequence according to NP\_001123630.1; NP\_036355.2.

Please note the [peptide](#) is available for sale.

### Purification and Storage

Purified from goat serum by ammonium sulphate precipitation followed by antigen affinity chromatography using the immunizing peptide.

Supplied at 0.5 mg/ml in Tris saline, 0.02% sodium azide, pH7.3 with 0.5% bovine serum albumin.

Aliquot and store at -20°C. Minimize freezing and thawing.

### Applications Tested

**Peptide ELISA:** antibody detection limit dilution 1:16000.

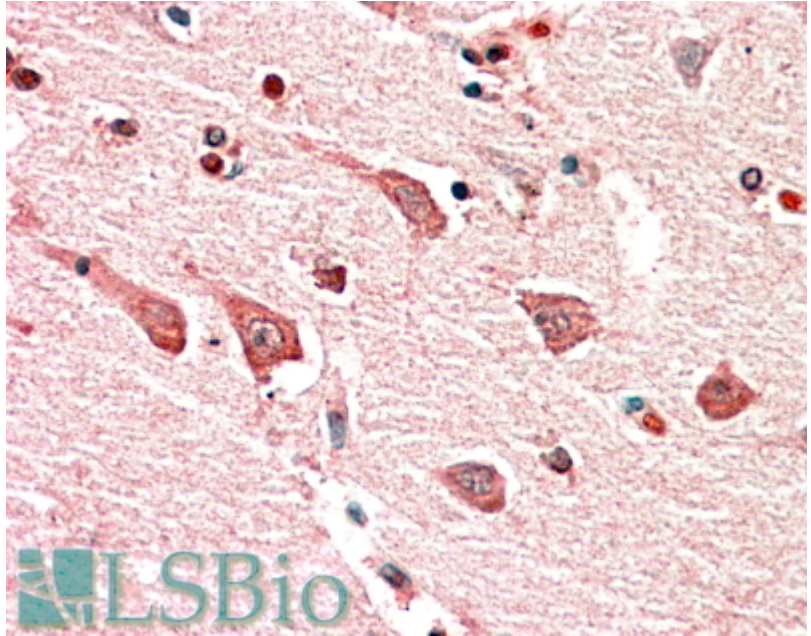
**Western blot:** Approx 120kDa band observed in lysates of cell line NIH3T3 (calculated MW of 125kDa according to Human NP\_036355.2 and 128kDa according to Mouse NP\_034993.2). Recommended concentration: 1-3µg/ml.

**IHC:** In paraffin embedded Human Cerebral Cortex shows cytoplasm staining in the neuronal bodies. Recommended concentration, 5-10µg/ml.

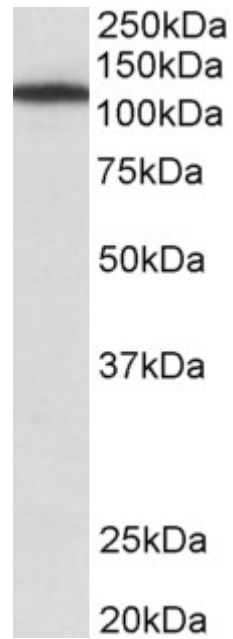
### Species Reactivity

**Tested:** Human, Mouse

**Expected from sequence similarity:** Human, Mouse, Rat, Dog, Cow



EB10549 (5 $\mu$ g/ml) staining of paraffin embedded Human Cerebral Cortex. Steamed antigen retrieval with citrate buffer pH 6, AP-staining.



EB10549 (1 $\mu$ g/ml) staining of NIH3T3 lysate (35 $\mu$ g protein in RIPA buffer). Primary incubation was 1 hour. Detected by chemiluminescence.