



## UK Office

### Everest Biotech Ltd

Cherwell Innovation Centre  
77 Heyford Park  
Upper Heyford  
Oxfordshire  
OX25 5HD  
UK

Enquiries:

[info@everestbiotech.com](mailto:info@everestbiotech.com)

Sales:

[sales@everestbiotech.com](mailto:sales@everestbiotech.com)

Tech support:

[support@everestbiotech.com](mailto:support@everestbiotech.com)

Tel: +44 (0)1869 238326

Fax: +44 (0)1869 238327

## US Office

### Everest Biotech c/o Abcore

405 Maple Street, Suite A106  
Ramona,  
CA 92065  
USA

Inquiries:

[info@everestbiotech.com](mailto:info@everestbiotech.com)

Sales:

[usasales@everestbiotech.com](mailto:usasales@everestbiotech.com)

Tech support:

[support@everestbiotech.com](mailto:support@everestbiotech.com)

Tel: 888-320-4628 (toll-free)

Fax: 888-841-9041

[www.everestbiotech.com](http://www.everestbiotech.com)

**Research Use Only. Not for  
diagnostic or therapeutic use.**

## EB09955 - Goat Anti-Myogenin / MYF4 Antibody

Size: 100µg specific antibody in 200µl



### Target Protein

**Principal Names:** bHLHc3, MYF4, myogenic factor 4, Myogenic factor-4, MYOGENIN, myogenin, myogenin, myogenin (myogenic factor 4), MYOG

**Official Symbol:** MYOG

**Accession Number(s):** NP\_002470.2

**Human GeneID(s):** [4656](#)

### Immunogen

Peptide with sequence C-TDAHNLHSLTSIVD, from the C Terminus (near) of the protein sequence according to NP\_002470.2.

Please note the [peptide](#) is available for sale.

### Purification and Storage

Purified from goat serum by ammonium sulphate precipitation followed by antigen affinity chromatography using the immunizing peptide.

Supplied at 0.5 mg/ml in Tris saline, 0.02% sodium azide, pH7.3 with 0.5% bovine serum albumin.

Aliquot and store at -20°C. Minimize freezing and thawing.

### Applications Tested

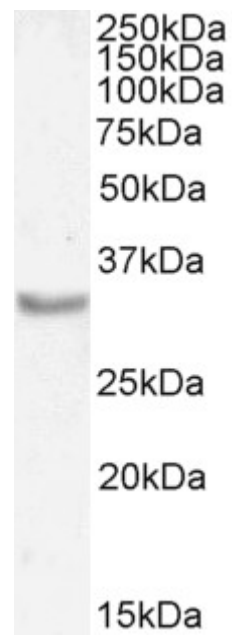
**Peptide ELISA:** antibody detection limit dilution 1:128000.

**Western blot:** Approx 35kDa band observed in Mouse Skeletal Muscle lysates (calculated MW of 25.2kDa according to Mouse NP\_112466.1). This molecular weight is routinely observed by other sources. Recommended concentration: 1-2µg/ml. Primary incubation 1 hour at room temperature.

### Species Reactivity

**Tested:** Mouse

**Expected from sequence similarity:** Human, Mouse, Rat, Dog, Cow, Pig



EB09955 (1µg/ml) staining of Mouse Skeletal Muscle lysate (35µg protein in RIPA buffer). Detected by chemiluminescence.