



## UK Office

### Everest Biotech Ltd

Cherwell Innovation Centre  
77 Heyford Park  
Upper Heyford  
Oxfordshire  
OX25 5HD  
UK

Enquiries:

[info@everestbiotech.com](mailto:info@everestbiotech.com)

Sales:

[sales@everestbiotech.com](mailto:sales@everestbiotech.com)

Tech support:

[support@everestbiotech.com](mailto:support@everestbiotech.com)

Tel: +44 (0)1869 238326

Fax: +44 (0)1869 238327

## US Office

### Everest Biotech c/o Abcore

405 Maple Street, Suite A106  
Ramona,  
CA 92065  
USA

Inquiries:

[info@everestbiotech.com](mailto:info@everestbiotech.com)

Sales:

[usasales@everestbiotech.com](mailto:usasales@everestbiotech.com)

Tech support:

[support@everestbiotech.com](mailto:support@everestbiotech.com)

Tel: 888-320-4628 (toll-free)

Fax: 888-841-9041

[www.everestbiotech.com](http://www.everestbiotech.com)

**Research Use Only. Not for  
diagnostic or therapeutic use.**

## EB12108 - Goat Anti-Myosin IH Antibody

Size: 100µg specific antibody in 200µl



### Target Protein

**Principal Names:** MYO1H, myosin IH, myosin-1H, myosin-Ih, unconventional myosin-Ih

**Official Symbol:** Myo1H

**Accession Number(s):** NP\_001158045.1

**Human GeneID(s):** [283446](#)

**Non-Human GeneID(s):** 231646 (mouse), 687866 (rat)

### Immunogen

Peptide with sequence C-EDQVYKDKNGQLR, from the C Terminus of the protein sequence according to NP\_001158045.1.

Please note the [peptide](#) is available for sale.

### Purification and Storage

Purified from goat serum by ammonium sulphate precipitation followed by antigen affinity chromatography using the immunizing peptide.

Supplied at 0.5 mg/ml in Tris saline, 0.02% sodium azide, pH7.3 with 0.5% bovine serum albumin.

Aliquot and store at -20°C. Minimize freezing and thawing.

### Applications Tested

**Peptide ELISA:** antibody detection limit dilution 1:128000.

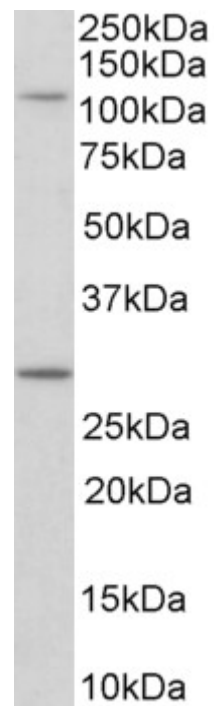
**Western blot:** Approx 110kDa band observed in lysates of cell line NIH3T3 (calculated MW of 118kDa according to NP\_001158045.1). Recommended concentration: 0.1-0.3µg/ml. An additional band of unknown identity was also consistently observed at 28kDa. This band was successfully blocked by incubation with the immunizing peptide. Primary incubation was 1 hour. Preliminary testing was unsuccessful on Rat and Pig Skeletal Muscle for this particular batch.

**IHC:** Paraffin embedded Human Kidney. Recommended concentration: 5µg/ml.

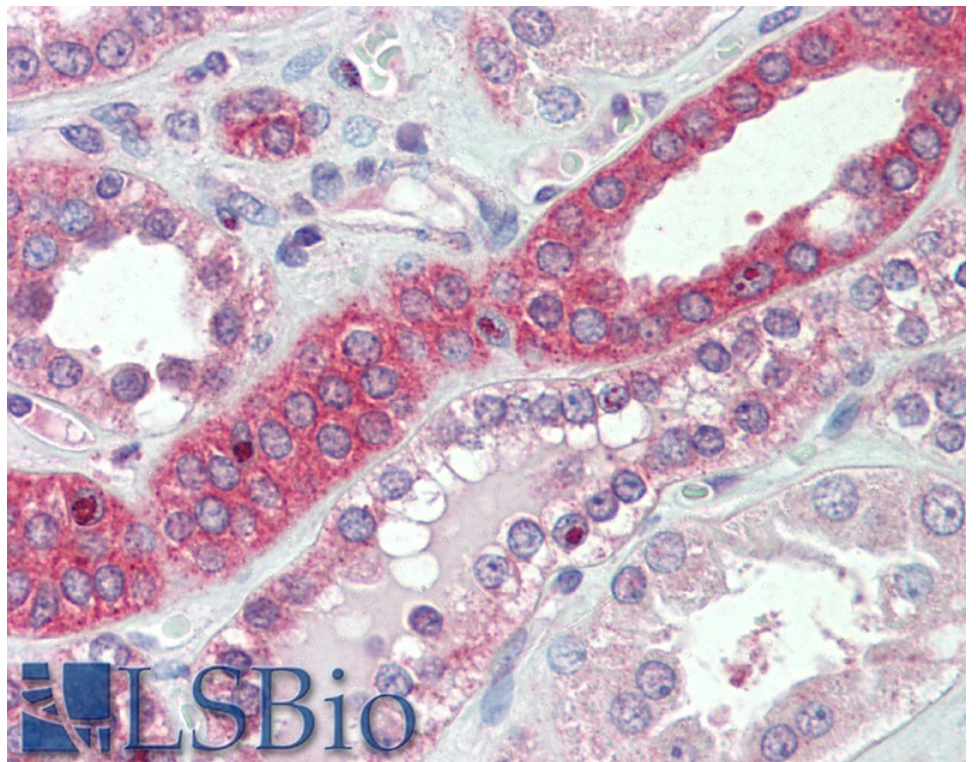
### Species Reactivity

**Tested:** Human, Mouse

**Expected from sequence similarity:** Human, Mouse, Rat, Cow, Pig



EB12108 (0.1 $\mu$ g/ml) staining of NIH3T3 lysate (35 $\mu$ g protein in RIPA buffer). Detected by chemiluminescence.



EB12108 (5 $\mu$ g/ml) staining of paraffin embedded Human Kidney. Steamed antigen retrieval with citrate buffer pH 6, AP-staining.