



Everest Biotech Ltd
Cherwell Innovation Centre
77 Heyford Park
Upper Heyford
Oxfordshire
OX25 5HD, United Kingdom

everestbiotech.com

sales@everestbiotech.com

support@everestbiotech.com

Tel +44 1869 238326

Fax +44 1869 238327

**Research Use Only. Not for
diagnostic or therapeutic use.**

Storage: For long-term storage
keep aliquots at -20°C. (Store no
longer than 12 months at 4°C).
Minimize freezing and thawing.

EB07693 - Goat Anti-NANOG (C Terminus) Antibody

Size: 100µg specific antibody in 200µl



Target Protein

Principal Names: homeobox transcription factor Nanog-delta 48, homeobox transcription factor Nanog, Nanog homeobox, NANOG

Official Symbol: NANOG

Accession Number(s): NP_079141.2

Human GeneID(s): [79923](#)

Immunogen

Peptide with sequence C-DLFLNYSMNMQPED, from the C Terminus of the protein sequence according to NP_079141.2.

Please note the [peptide](#) is available for sale.

Purification and Storage

Purified from goat serum by ammonium sulphate precipitation followed by antigen affinity chromatography using the immunizing peptide.

Supplied at 0.5 mg/ml in Tris saline, 0.02% sodium azide, pH7.3 with 0.5% bovine serum albumin.

Aliquot and store at -20°C. Minimize freezing and thawing.

Applications Tested

Peptide ELISA: antibody detection limit dilution 1:128000.

Western blot: Approx 35kDa band observed in nuclear lysates of cell line HeLa (calculated MW of 34.6kDa according to NP_079141.1). Recommended concentration: 0.05-0.1µg/ml. An additional band of approx. 37kDa is observed and is consistent with the observations of higher molecular weight bands regularly found with antibodies from other sources.

IHC: In paraffin embedded Human Testis shows nuclear staining in spermatogonia.

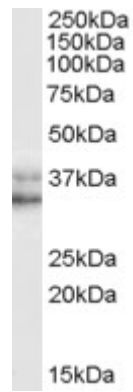
Recommended concentration, 1-2µg/ml.

Enzyme immunoassay: Sandwich-type ELISA with increasing amount of recombinant NANOG captured by a rabbit antibody. Recommended reporter concentration: 5-10ug/ml

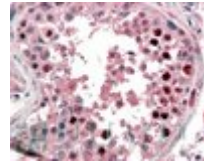
Species Reactivity

Tested: Human

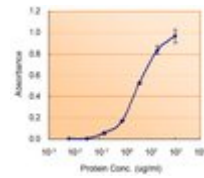
Expected from sequence similarity: Human



EB07693 (0.05 μ g/ml) staining of HeLa (nuclear) cell lysate (35 μ g protein in RIPA buffer). Primary incubation was 1 hour. Detected by chemiluminescence.



EB07693 (2 μ g/ml) staining of paraffin embedded Human Testis. Steamed antigen retrieval with citrate buffer pH 6, AP-staining.



EB0793 (5ug/ml) as the reporter with EB002009 as the capture rabbit antibody (5ug/ml).