



## UK Office

**Everest Biotech Ltd**  
Cherwell Innovation Centre  
77 Heyford Park  
Upper Heyford  
Oxfordshire  
OX25 5HD  
UK

Enquiries:

[info@everestbiotech.com](mailto:info@everestbiotech.com)

Sales:

[sales@everestbiotech.com](mailto:sales@everestbiotech.com)

Tech support:

[support@everestbiotech.com](mailto:support@everestbiotech.com)

Tel: +44 (0)1869 238326

Fax: +44 (0)1869 238327

## US Office

**Everest Biotech c/o Abcore**  
405 Maple Street, Suite A106  
Ramona,  
CA 92065  
USA

Inquiries:

[info@everestbiotech.com](mailto:info@everestbiotech.com)

Sales:

[usasales@everestbiotech.com](mailto:usasales@everestbiotech.com)

Tech support:

[support@everestbiotech.com](mailto:support@everestbiotech.com)

Tel: 888-320-4628 (toll-free)

Fax: 888-841-9041

[www.everestbiotech.com](http://www.everestbiotech.com)

**Research Use Only. Not for  
diagnostic or therapeutic use.**

## EB06680 - Goat Anti-NANOS1 Antibody

Size: 100µg specific antibody in 200µl



### Target Protein

**Principal Names:** NANOS1, nanos homolog 1 (Drosophila), NOS1, nanos homolog 1

**Official Symbol:** NANOS1

**Accession Number(s):** NP\_955631.1

**Human GeneID(s):** [340719](#)

### Immunogen

Peptide with sequence C-SARDGPPGKKLR, from the C Terminus of the protein sequence according to NP\_955631.1.

Please note the [peptide](#) is available for sale.

### Purification and Storage

Purified from goat serum by ammonium sulphate precipitation followed by antigen affinity chromatography using the immunizing peptide.

Supplied at 0.5 mg/ml in Tris saline, 0.02% sodium azide, pH7.3 with 0.5% bovine serum albumin.

Aliquot and store at -20°C. Minimize freezing and thawing.

### Applications Tested

**Peptide ELISA:** antibody detection limit dilution 1:64000.

**Western blot:** Approx 35-37kDa band observed in Human Testis lysates (calculated MW of 30.2kDa according to NP\_955631.1). The observed molecular weight corresponds to earlier findings in literature with different antibodies (Clarke et al, Hum Mol Genet. 2004 Apr 1;13(7):727-39. Epub 2004 Feb 12, PMID: 14962983). Recommended concentration: 1-3µg/ml. Primary incubation was 1 hour. This antibody has been successfully used in WB on Human: Sajek et al (2018) PMID: 30269240.

### Species Reactivity

**Tested:** Human

**Expected from sequence similarity:** Human

### Specific Reference

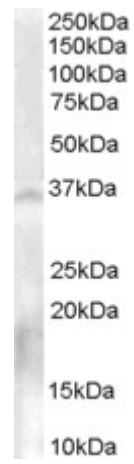
**This antibody has been successfully used in Western blot on Human:**

Sajek M, Janecki DM, Smialek MJ, Ginter-Matuszewska B, Spik A, Oczkowski S, Ilaslan E, Kusz-Zamelczyk K, Kotecki M, Blazewicz J, Jaruzelska J.

PUM1 and PUM2 exhibit different modes of regulation for SIAH1 that involve cooperativity with NANOS paralogues

Cell Mol Life Sci. 2018 Sep 29.

PMID: 30269240



EB06680 (0.3µg/ml) staining of Human Testis lysate (35µg protein in RIPA buffer). Detected by chemiluminescence.