



## UK Office

### Everest Biotech Ltd

Cherwell Innovation Centre  
77 Heyford Park  
Upper Heyford  
Oxfordshire  
OX25 5HD  
UK

Enquiries:

[info@everestbiotech.com](mailto:info@everestbiotech.com)

Sales:

[sales@everestbiotech.com](mailto:sales@everestbiotech.com)

Tech support:

[support@everestbiotech.com](mailto:support@everestbiotech.com)

Tel: +44 (0)1869 238326

Fax: +44 (0)1869 238327

## US Office

### Everest Biotech c/o Abcore

405 Maple Street, Suite A106  
Ramona,  
CA 92065  
USA

Inquiries:

[info@everestbiotech.com](mailto:info@everestbiotech.com)

Sales:

[usasales@everestbiotech.com](mailto:usasales@everestbiotech.com)

Tech support:

[support@everestbiotech.com](mailto:support@everestbiotech.com)

Tel: 888-320-4628 (toll-free)

Fax: 888-841-9041

[www.everestbiotech.com](http://www.everestbiotech.com)

**Research Use Only. Not for  
diagnostic or therapeutic use.**

## EB11782 - Goat Anti-Nat8l (mouse aa211-223) Antibody

Size: 100µg specific antibody in 200µl



### Target Protein

**Principal Names:** 1110038O08Rik, NAA synthetase, N-acetylaspartate synthetase, N-acetyltransferase 8-like, N-acetyltransferase 8-like protein, Nat8l, protein Shati, Shati

**Official Symbol:** Nat8l

**Accession Number(s):** NP\_001001985.3

**Human GeneID(s):** [339983](#)

**Non-Human GeneID(s):** 269642 (mouse), 289727 (rat)

### Immunogen

Peptide with sequence C-SVDSRFRGKGIK, from the internal region of the protein sequence according to NP\_001001985.3.

Please note the [peptide](#) is available for sale.

### Purification and Storage

Purified from goat serum by ammonium sulphate precipitation followed by antigen affinity chromatography using the immunizing peptide.

Supplied at 0.5 mg/ml in Tris saline, 0.02% sodium azide, pH7.3 with 0.5% bovine serum albumin.

Aliquot and store at -20°C. Minimize freezing and thawing.

### Applications Tested

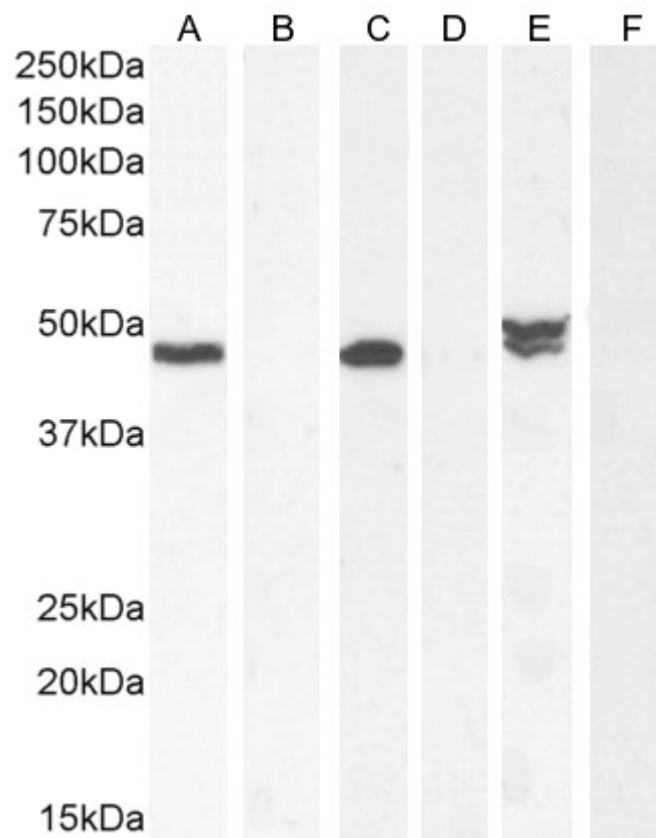
**Peptide ELISA:** antibody detection limit dilution 1:16000.

**Western blot:** Approx 45-48kDa band observed in Human Cerebellum and Mouse Brain lysates, and approx. 48-50kDa in Rat Brain lysates (calculated MW of 32.8kDa according to Human NP\_848652.2 and 32.7kDa according to Mouse NP\_001001985.3 and Rat NP\_001178610.1). These bands were successfully blocked by incubation with the immunising peptide. and correspond to similar findings in literature with different antibodies (Becker et al, PMID: 20643647). Recommended concentration: 0.05-0.1µg/ml. Primary incubation 1 hour at room temperature.

### Species Reactivity

**Tested:** Human, Mouse, Rat

**Expected from sequence similarity:** Human, Mouse, Rat, Dog, Cow



EB11782 (0.1 $\mu$ g/ml) staining of Human Cerebellum (A) + peptide (B), Mouse Brain (C) + peptide (D) and (0.05 $\mu$ g/ml) of Rat Brain (E) + peptide (F) lysate (35 $\mu$ g protein in RIPA buffer). Detected by chemiluminescence.