



UK Office

Everest Biotech Ltd

Cherwell Innovation Centre
77 Heyford Park
Upper Heyford
Oxfordshire
OX25 5HD
UK

Enquiries:

info@everestbiotech.com

Sales:

sales@everestbiotech.com

Tech support:

support@everestbiotech.com

Tel: +44 (0)1869 238326

Fax: +44 (0)1869 238327

US Office

Everest Biotech c/o Abcore

405 Maple Street, Suite A106
Ramona,
CA 92065
USA

Inquiries:

info@everestbiotech.com

Sales:

usasales@everestbiotech.com

Tech support:

support@everestbiotech.com

Tel: 888-320-4628 (toll-free)

Fax: 888-841-9041

www.everestbiotech.com

**Research Use Only. Not for
diagnostic or therapeutic use.**

EB06991 - Goat Anti-NCAM2 / OCAM Antibody

Size: 100µg specific antibody in 200µl



Target Protein

Principal Names: NCAM2, neural cell adhesion molecule 2, HGNC:7657, MGC51008, NCAM21, OCAM

Official Symbol: NCAM2

Accession Number(s): NP_004531.2

Human GeneID(s): [4685](#)

Non-Human GeneID(s): 17968 (mouse), 288280 (rat)

Immunogen

Peptide with sequence C-KVSNDIQSKEDDSK, from the C Terminus of the protein sequence according to NP_004531.2.

Please note the [peptide](#) is available for sale.

Purification and Storage

Purified from goat serum by ammonium sulphate precipitation followed by antigen affinity chromatography using the immunizing peptide.

Supplied at 0.5 mg/ml in Tris saline, 0.02% sodium azide, pH7.3 with 0.5% bovine serum albumin.

Aliquot and store at -20°C. Minimize freezing and thawing.

Applications Tested

Peptide ELISA: antibody detection limit dilution 1:4000.

Western blot: This antibody has been successfully used in WB on Mouse in the following papers, PMID: 34299022 and PMID: 32043120.

IHC: Frozen section of Olfactory bulb from transcardially PFA-perfused Mouse shows strong staining of axon bundles (right side middle, figure 1) and moderate peripheral staining outside the glomeruli (top, figure 1). NCAM2 (red) is stained complementary to VGLUT2 (blue) and NQO1 (green) in figure 2. Recommended concentration: 0.5µg/ml. Paraffin embedded Human Brain (Cortex). Recommended concentration: 3.75ug/ml.

Species Reactivity

Tested: Human, Mouse

Expected from sequence similarity: Human, Mouse, Rat, Dog, Cow

Specific References

This antibody has been successfully used in WB on Mouse:

Antoni Parcerisas, Alba Ortega-Gascó, Marc Hernaiz-Llorens, Maria Antonia Odena, Fausto Ulloa, Eliandre de Oliveira, Miquel Bosch, Lluís Pujadas, and Eduardo Soriano

New Partners Identified by Mass Spectrometry Assay Reveal Functions of NCAM2 in Neural Cytoskeleton Organization.

Int J Mol Sci. 2021 Jul; 22(14): 7404.

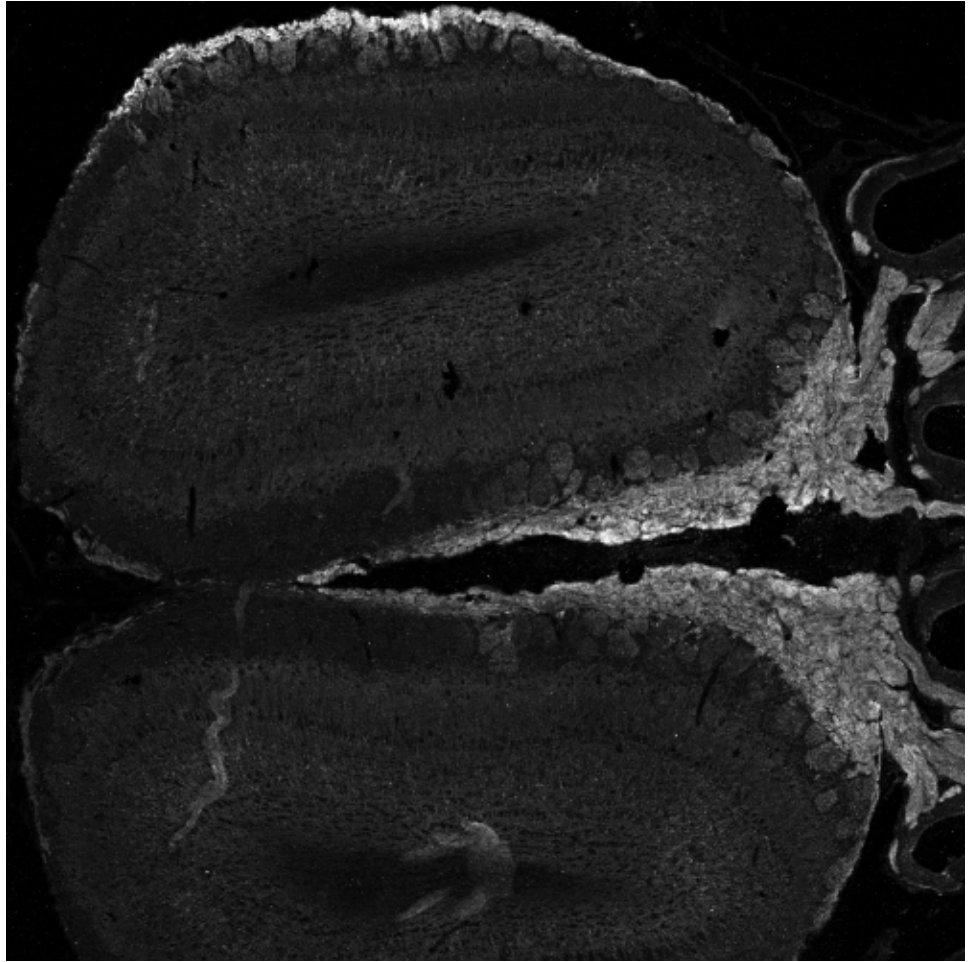
PMID: 34299022

This antibody has been successfully used in WB and IHC on Mouse:

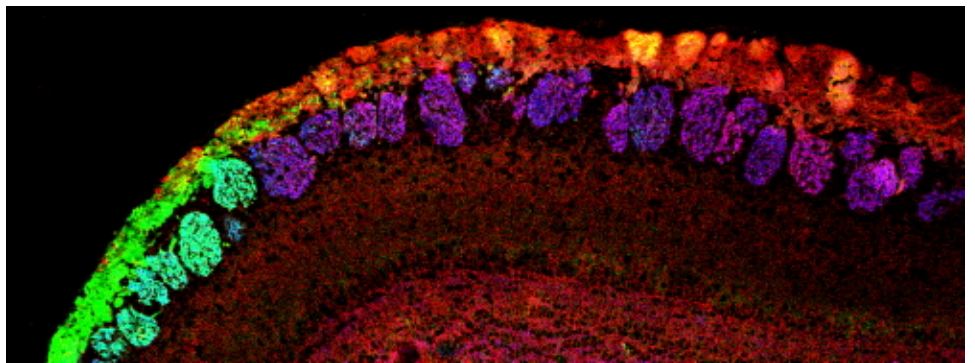
Antoni Parcerisas, Lluís Pujadas, Alba Ortega-Gascó, Bartomeu Perelló-Amorós, Ricardo Viais, Keiko Hino, Joana Figueiro-Silva, Anna La Torre, Ramón Trullás, Sergi Simó, Jens Lüders, and Eduardo Soriano

NCAM2 Regulates Dendritic and Axonal Differentiation through the Cytoskeletal Proteins

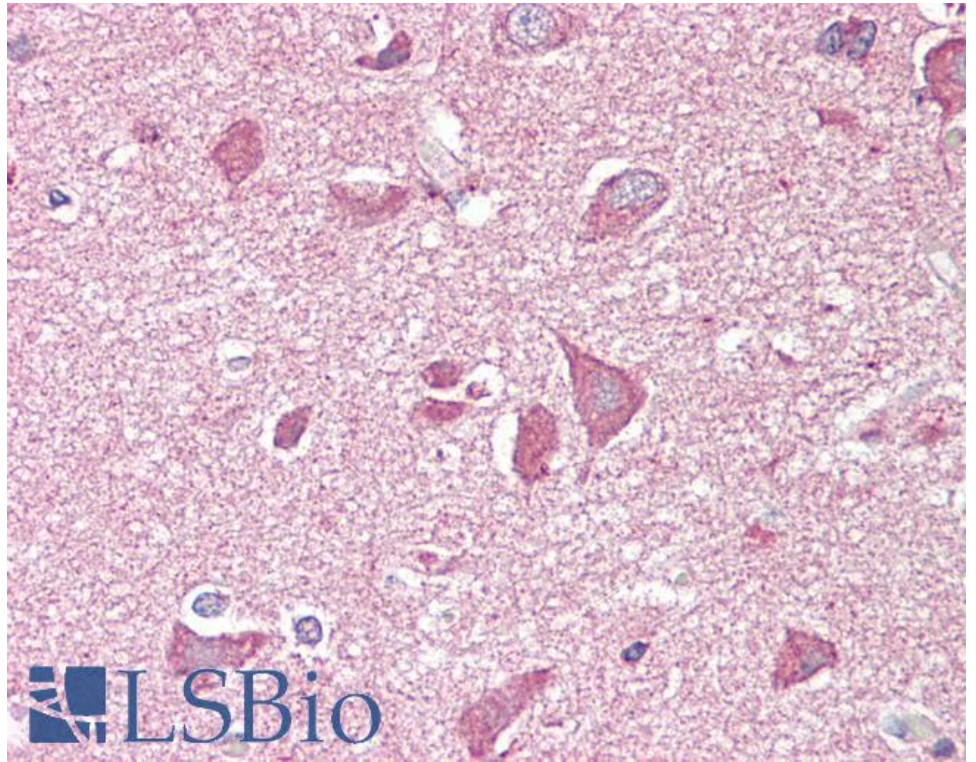
MAP2 and 14-3-3.
Cereb Cortex. 2020 May; 30(6): 3781-3799.
PMID: 32043120



EB06991 (0.5 μ g/ml) 24h-staining of PFA-perfused cryosection of Mouse Olfactory bub. Antigen retrieval with methanol (-20C, 10min) followed by 1% SDS(10min), IF-staning. Data obtained from customer.



EB06991 (0.5 μ g/ml) 48h-staining of PFA-perfused cryosection of Mouse Olfactory bulb. Antigen retrieval with citrate buffer pH 6 at 95C for 10min, IF-staning for NCAM2 (red), VGLUT2 (blue) and NQO1 (green), data obtained from customer.



EB06991 (3.75µg/ml) staining of paraffin embedded Human Cortex. Steamed antigen retrieval with citrate buffer pH 6, AP-staining.