



## UK Office

### Everest Biotech Ltd

Cherwell Innovation Centre  
77 Heyford Park  
Upper Heyford  
Oxfordshire  
OX25 5HD  
UK

Enquiries:

[info@everestbiotech.com](mailto:info@everestbiotech.com)

Sales:

[sales@everestbiotech.com](mailto:sales@everestbiotech.com)

Tech support:

[support@everestbiotech.com](mailto:support@everestbiotech.com)

Tel: +44 (0)1869 238326

Fax: +44 (0)1869 238327

## US Office

### Everest Biotech c/o Abcore

405 Maple Street, Suite A106  
Ramona,  
CA 92065  
USA

Inquiries:

[info@everestbiotech.com](mailto:info@everestbiotech.com)

Sales:

[usasales@everestbiotech.com](mailto:usasales@everestbiotech.com)

Tech support:

[support@everestbiotech.com](mailto:support@everestbiotech.com)

Tel: 888-320-4628 (toll-free)

Fax: 888-841-9041

[www.everestbiotech.com](http://www.everestbiotech.com)

**Research Use Only. Not for  
diagnostic or therapeutic use.**

## EB08947 - Goat Anti-NCE2 / UBE2F Antibody

Size: 100µg specific antibody in 200µl



### Target Protein

**Principal Names:** UBE2F, ubiquitin-conjugating enzyme E2F (putative), MGC18120, NCE2, NEDD8 conjugating enzyme, NEDD8-conjugating enzyme

**Official Symbol:** UBE2F

**Accession Number(s):** NP\_542409.1

**Human GeneID(s):** [140739](#)

**Non-Human GeneID(s):** 67921 (mouse), 363284 (rat)

### Immunogen

Peptide with sequence C-HLRDKEDFRNKVDD, from the C Terminus of the protein sequence according to NP\_542409.1.

Please note the [peptide](#) is available for sale.

### Purification and Storage

Purified from goat serum by ammonium sulphate precipitation followed by antigen affinity chromatography using the immunizing peptide.

Supplied at 0.5 mg/ml in Tris saline, 0.02% sodium azide, pH7.3 with 0.5% bovine serum albumin.

Aliquot and store at -20°C. Minimize freezing and thawing.

### Applications Tested

**Peptide ELISA:** antibody detection limit dilution 1:32000.

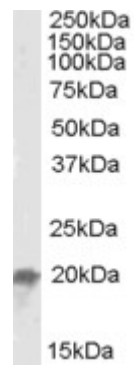
**Western blot:** Approx. 20kDa band observed in Mouse Liver lysates (calculated MW of 21.1kDa according to Human NP\_542409.1 and to Mouse NP\_080730.1). Recommended concentration: 0.05-0.2µg/ml.

**IHC:** In paraffin embedded Human Placenta shows membrane staining in trophoblasts-. Recommended concentration: 2.5-3.8µg/ml.

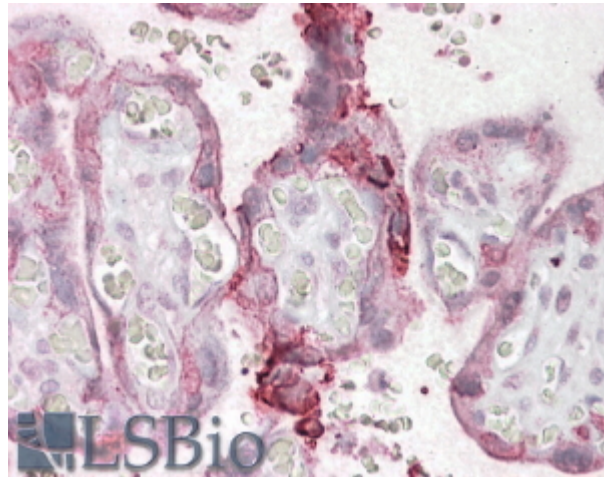
### Species Reactivity

**Tested:** Human, Mouse

**Expected from sequence similarity:** Human, Mouse, Rat, Dog, Cow



EB08947 (0.05µg/ml) staining of Mouse Liver lysate (35µg protein in RIPA buffer). Primary incubation was 1 hour. Detected by chemiluminescence.



In paraffin embedded Human Placenta shows membrane staining in trophoblasts. Recommended concentration: 2.5-3.8µg/ml.