



UK Office

Everest Biotech Ltd

Cherwell Innovation Centre
77 Heyford Park
Upper Heyford
Oxfordshire
OX25 5HD
UK

Enquiries:

info@everestbiotech.com

Sales:

sales@everestbiotech.com

Tech support:

support@everestbiotech.com

Tel: +44 (0)1869 238326

Fax: +44 (0)1869 238327

US Office

Everest Biotech c/o Abcore

405 Maple Street, Suite A106
Ramona,
CA 92065
USA

Inquiries:

info@everestbiotech.com

Sales:

usasales@everestbiotech.com

Tech support:

support@everestbiotech.com

Tel: 888-320-4628 (toll-free)

Fax: 888-841-9041

www.everestbiotech.com

**Research Use Only. Not for
diagnostic or therapeutic use.**

EB08455 - Goat Anti-NCOA3 Antibody

Size: 100µg specific antibody in 200µl



Target Protein

Principal Names: NCOA3, nuclear receptor coactivator 3, RP5-1049G16.3, ACTR, AIB-1, AIB1, CAGH16, CTG26, MGC141848, RAC3, SRC-1, SRC3, TNRC14, TNRC16, TRAM-1, pCIP, CBP-interacting protein, amplified in breast cancer-1, receptor-associated coactivator 3

Official Symbol: NCOA3

Accession Number(s): NP_006525.2; NP_858045.1

Human GeneID(s): [8202](#)

Important Comments: This antibody is expected to recognise both reported isoforms (NP_006525.2; NP_858045.1)

Immunogen

Peptide with sequence C-TNETQRQKSHT, from the internal region of the protein sequence according to NP_006525.2; NP_858045.1.

Please note the [peptide](#) is available for sale.

Purification and Storage

Purified from goat serum by ammonium sulphate precipitation followed by antigen affinity chromatography using the immunizing peptide.

Supplied at 0.5 mg/ml in Tris saline, 0.02% sodium azide, pH7.3 with 0.5% bovine serum albumin.

Aliquot and store at -20°C. Minimize freezing and thawing.

Applications Tested

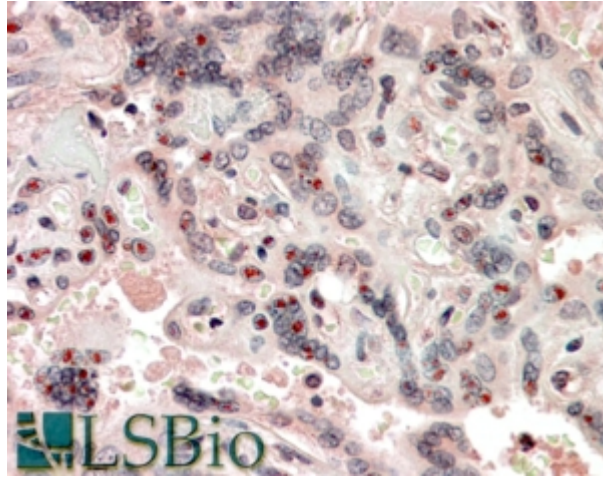
Peptide ELISA: antibody detection limit dilution 1:16000.

IHC: Paraffin embedded Human Placenta and Spleen. Recommended concentration: 3.75µg/ml.

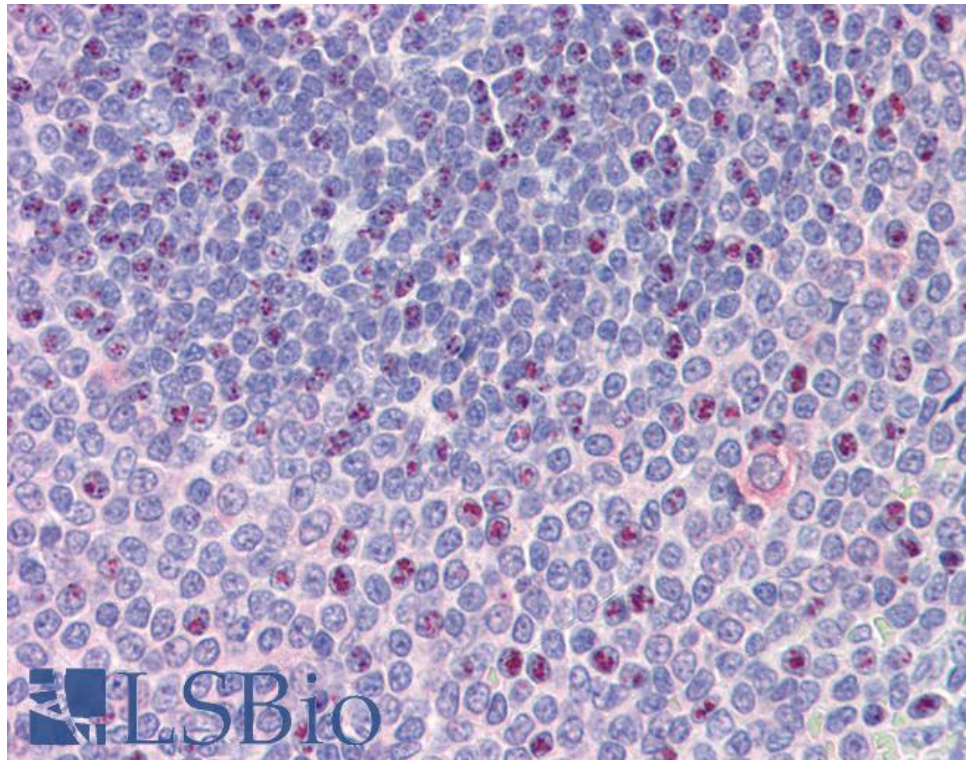
Species Reactivity

Tested: Human

Expected from sequence similarity: Human, Mouse



EB08455 (3.75µg/ml) staining of paraffin embedded Human Placenta. Steamed antigen retrieval with citrate buffer pH 6, AP-staining.



EB08455 (3.75µg/ml) staining of paraffin embedded Human Spleen. Steamed antigen retrieval with citrate buffer pH 6, AP-staining.