



UK Office

Everest Biotech Ltd

Cherwell Innovation Centre
77 Heyford Park
Upper Heyford
Oxfordshire
OX25 5HD
UK

Enquiries:

info@everestbiotech.com

Sales:

sales@everestbiotech.com

Tech support:

support@everestbiotech.com

Tel: +44 (0)1869 238326

www.everestbiotech.com

**Research Use Only. Not for
diagnostic or therapeutic use.**

EB10790 - Goat Anti-NDR1 / STK38 Antibody

Size: 100µg specific antibody in 200µl



Target Protein

Principal Names: STK38, serine/threonine kinase 38, NDR, NDR1, NDR1 protein kinase, Ndr Ser/Thr kinase-like protein, nuclear Dbf2-related 1, nuclear Dbf2-related kinase 1, serine threonine protein kinase

Official Symbol: STK38

Accession Number(s): NP_009202.1

Human GeneID(s): [11329](#)

Non-Human GeneID(s): 361813 (rat)

Important Comments: This antibody is NOT expected to cross-react with STK38L (GeneID 23012).

Immunogen

Peptide with sequence C-KPTVATSNHPET, from the C Terminus (near) of the protein sequence according to NP_009202.1.

Please note the [peptide](#) is available for sale.

Purification and Storage

Purified from goat serum by ammonium sulphate precipitation followed by antigen affinity chromatography using the immunizing peptide.

Supplied at 0.5 mg/ml in Tris saline, 0.02% sodium azide, pH7.3 with 0.5% bovine serum albumin.

Aliquot and store at -20°C. Minimize freezing and thawing.

Applications Tested

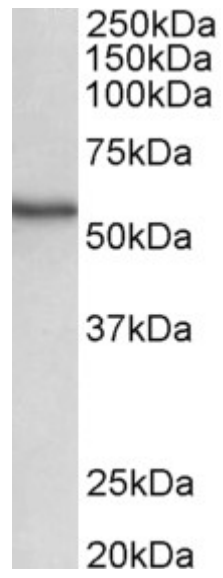
Peptide ELISA: antibody detection limit dilution 1:32000.

Western blot: Approx 55kDa band observed in Human and Rat Spleen lysates (calculated MW of 54.2kDa according to NP_009202.1). Recommended concentration: 0.5-2µg/ml.

Species Reactivity

Tested: Human, Rat

Expected from sequence similarity: Human, Rat, Dog, Pig, Cow



EB10790 (0.5 μ g/ml) staining of Human Spleen lysate (35 μ g protein in RIPA buffer). Primary incubation was 1 hour. Detected by chemiluminescence.