



## UK Office

### Everest Biotech Ltd

Cherwell Innovation Centre  
77 Heyford Park  
Upper Heyford  
Oxfordshire  
OX25 5HD  
UK

Enquiries:

[info@everestbiotech.com](mailto:info@everestbiotech.com)

Sales:

[sales@everestbiotech.com](mailto:sales@everestbiotech.com)

Tech support:

[support@everestbiotech.com](mailto:support@everestbiotech.com)

Tel: +44 (0)1869 238326

Fax: +44 (0)1869 238327

## US Office

### Everest Biotech c/o Abcore

405 Maple Street, Suite A106  
Ramona,  
CA 92065  
USA

Inquiries:

[info@everestbiotech.com](mailto:info@everestbiotech.com)

Sales:

[usasales@everestbiotech.com](mailto:usasales@everestbiotech.com)

Tech support:

[support@everestbiotech.com](mailto:support@everestbiotech.com)

Tel: 888-320-4628 (toll-free)

Fax: 888-841-9041

[www.everestbiotech.com](http://www.everestbiotech.com)

**Research Use Only. Not for  
diagnostic or therapeutic use.**

## EB05707-B - Goat Anti-NDRG1, Biotinylated Antibody

Size: 100µg specific antibody in 200µl



### Target Protein

**Principal Names:** NDRG1, N-myc downstream regulated 1, CAP43, CMT4D, DRG-1, DRG1, GC4, HMSNL, NDR1, NMSL, PROXY1, RIT42, RTP, TARG1, TDD5, N-myc downstream-regulated gene 1 protein, differentiation-related gene 1 protein, nickel-specific induction protein Cap43, protein regulated by oxygen-1, reducing agents and tunicamycin-responsive protein, tunicamycin-responsive protein

**Official Symbol:** NDRG1

**Accession Number(s):** NP\_006087.2

**Human GeneID(s):** [10397](#)

**Non-Human GeneID(s):** 17990 (mouse)

**Important Comments:** Reported variants represent identical protein: NP\_006087.2, NP\_001128714.1

### Immunogen

Peptide with sequence GNSAGPKSMEVSC., from the C Terminus of the protein sequence according to NP\_006087.2.

Please note the [peptide](#) is available for sale.

### Purification and Storage

Purified from goat serum by ammonium sulphate precipitation followed by antigen affinity chromatography using the immunizing peptide.

Supplied at 0.5 mg/ml in Tris saline, 0.02% sodium azide, pH7.3 with 0.5% bovine serum albumin.

Aliquot and store at -20°C. Minimize freezing and thawing.

### Applications Tested

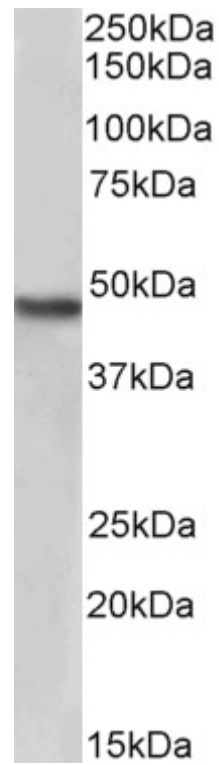
**Peptide ELISA:** antibody detection limit dilution 1:32000.

**Western blot:** Approx 48kDa band observed in Human Kidney lysates (calculated MW of 42.8kDa according to NP\_006087.2). See non-biotinylated parental product's datasheet for further QC data. Recommended concentration: 2-4µg/ml.

### Species Reactivity

**Tested:** Human

**Expected from sequence similarity:** Human



Biotinylated EB05707 (2µg/ml) staining of Human Kidney lysate (35µg protein in RIPA buffer), exactly mirroring its parental non-biotinylated product. Primary incubation was 1 hour. Detected by chemiluminescence, using streptavidin-HRP and using NAP blocker as a substitute for skimmed milk.