



UK Office

Everest Biotech Ltd

Cherwell Innovation Centre
77 Heyford Park
Upper Heyford
Oxfordshire
OX25 5HD
UK

Enquiries:

info@everestbiotech.com

Sales:

sales@everestbiotech.com

Tech support:

support@everestbiotech.com

Tel: +44 (0)1869 238326

Fax: +44 (0)1869 238327

US Office

Everest Biotech c/o Abcore

405 Maple Street, Suite A106
Ramona,
CA 92065
USA

Inquiries:

info@everestbiotech.com

Sales:

usasales@everestbiotech.com

Tech support:

support@everestbiotech.com

Tel: 888-320-4628 (toll-free)

Fax: 888-841-9041

www.everestbiotech.com

**Research Use Only. Not for
diagnostic or therapeutic use.**

EB05707-B - Goat Anti-NDRG1, Biotinylated Antibody

Size: 100µg specific antibody in 200µl



Target Protein

Principal Names: NDRG1, N-myc downstream regulated 1, CAP43, CMT4D, DRG-1, DRG1, GC4, HMSNL, NDR1, NMSL, PROXY1, RIT42, RTP, TARG1, TDD5, N-myc downstream-regulated gene 1 protein, differentiation-related gene 1 protein, nickel-specific induction protein Cap43, protein regulated by oxygen-1, reducing agents and tunicamycin-responsive protein, tunicamycin-responsive protein

Official Symbol: NDRG1

Accession Number(s): NP_006087.2

Human GeneID(s): [10397](#)

Non-Human GeneID(s): 17990 (mouse)

Important Comments: Reported variants represent identical protein: NP_006087.2, NP_001128714.1

Immunogen

Peptide with sequence GNSAGPKSMEVSC., from the C Terminus of the protein sequence according to NP_006087.2.

Please note the [peptide](#) is available for sale.

Purification and Storage

Purified from goat serum by ammonium sulphate precipitation followed by antigen affinity chromatography using the immunizing peptide.

Supplied at 0.5 mg/ml in Tris saline, 0.02% sodium azide, pH7.3 with 0.5% bovine serum albumin.

Aliquot and store at -20°C. Minimize freezing and thawing.

Applications Tested

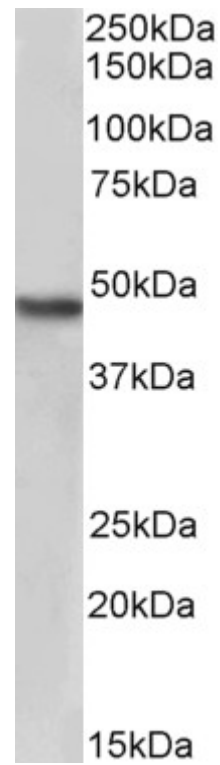
Peptide ELISA: antibody detection limit dilution 1:32000.

Western blot: Approx 48kDa band observed in Human Kidney lysates (calculated MW of 42.8kDa according to NP_006087.2). See non-biotinylated parental product's datasheet for further QC data. Recommended concentration: 2-4µg/ml.

Species Reactivity

Tested: Human

Expected from sequence similarity: Human



Biotinylated EB05707 (2 μ g/ml) staining of Human Kidney lysate (35 μ g protein in RIPA buffer), exactly mirroring its parental non-biotinylated product. Primary incubation was 1 hour. Detected by chemiluminescence, using streptavidin-HRP and using NAP blocker as a substitute for skimmed milk.