



UK Office

Everest Biotech Ltd

Cherwell Innovation Centre
77 Heyford Park
Upper Heyford
Oxfordshire
OX25 5HD
UK

Enquiries:

info@everestbiotech.com

Sales:

sales@everestbiotech.com

Tech support:

support@everestbiotech.com

Tel: +44 (0)1869 238326

Fax: +44 (0)1869 238327

US Office

Everest Biotech c/o Abcore

405 Maple Street, Suite A106
Ramona,
CA 92065
USA

Inquiries:

info@everestbiotech.com

Sales:

usasales@everestbiotech.com

Tech support:

support@everestbiotech.com

Tel: 888-320-4628 (toll-free)

Fax: 888-841-9041

www.everestbiotech.com

**Research Use Only. Not for
diagnostic or therapeutic use.**

EB10793 - Goat Anti-NDRG2 Antibody

Size: 100µg specific antibody in 200µl



Target Protein

Principal Names: NDRG2, NDRG family member 2, DKFZp781G1938, FLJ25522, KIAA1248, SYLD, N-myc downstream regulator 2, NDR1-related protein NDR2, OTTHUMP00000164405, OTTHUMP00000164407, OTTHUMP00000164408, cytoplasmic protein Ndr1, protein NDRG2, syld709

Official Symbol: NDRG2

Accession Number(s): NP_963293.1

Human GeneID(s): [57447](#)

Non-Human GeneID(s): 29811 (mouse), 171114 (rat)

Important Comments: This antibody is expected to recognize reported isoform a (NP_963293.1) only. Reported variants represent identical protein: NP_963831.1, NP_963293.1, NP_963834.1, NP_963833.1.

Immunogen

Peptide with sequence KEAELAARILLDQGG-C, from the N Terminus (near) of the protein sequence according to NP_963293.1.

Please note the [peptide](#) is available for sale.

Purification and Storage

Purified from goat serum by ammonium sulphate precipitation followed by antigen affinity chromatography using the immunizing peptide.

Supplied at 0.5 mg/ml in Tris saline, 0.02% sodium azide, pH7.3 with 0.5% bovine serum albumin.

Aliquot and store at -20°C. Minimize freezing and thawing.

Applications Tested

Peptide ELISA: antibody detection limit dilution 1:16000.

Western blot: Approx 45kDa band observed in Human Brain (Temporal Cortex), Mouse and Rat Brain lysates (calculated MW of 40.8kDa according to NP_963293.1).

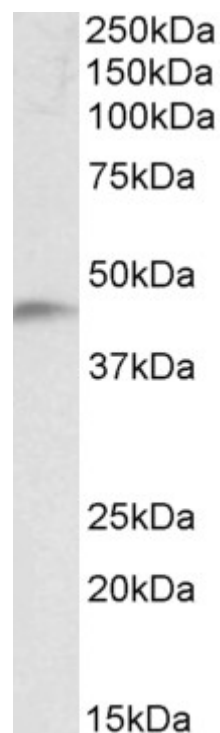
Recommended concentration: 0.1-0.3µg/ml. Primary incubation was 1 hour.

IHC: Paraffin embedded Human Adrenal Gland. Recommended concentration: 3.75µg/ml.

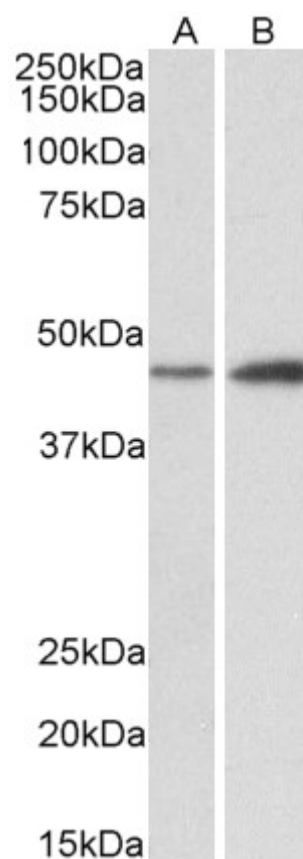
Species Reactivity

Tested: Human, Mouse, Rat

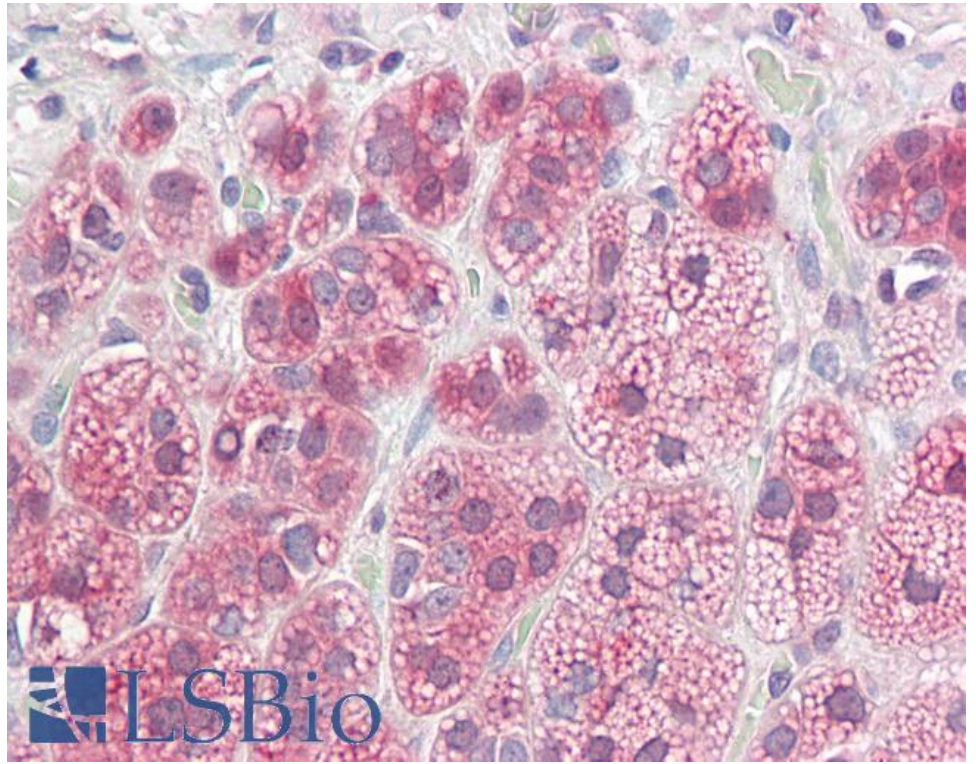
Expected from sequence similarity: Human, Mouse, Rat, Dog



EB10793 (0.1 μ g/ml) staining of Human Temporal Cortex lysate (35 μ g protein in RIPA buffer). Detected by chemiluminescence.



EB10793 (0.3 μ g/ml) staining of Mouse (A) and Rat (B) Brain lysates (35 μ g protein in RIPA buffer). Detected by chemiluminescence.



EB10793 (3.75µg/ml) staining of paraffin embedded Human Adrenal Gland. Steamed antigen retrieval with citrate buffer pH 6, AP-staining.