



UK Office

Everest Biotech Ltd

Cherwell Innovation Centre
77 Heyford Park
Upper Heyford
Oxfordshire
OX25 5HD
UK

Enquiries:

info@everestbiotech.com

Sales:

sales@everestbiotech.com

Tech support:

support@everestbiotech.com

Tel: +44 (0)1869 238326

www.everestbiotech.com

**Research Use Only. Not for
diagnostic or therapeutic use.**

EB11684 - Goat Anti-NDUFA7 (aa27-38) Antibody

Size: 100µg specific antibody in 200µl



Target Protein

Principal Names: B14.5a, CI-B14.5a, complex I B14.5a subunit, NADH dehydrogenase (ubiquinone) 1 alpha subcomplex, 7, 14.5kDa, NADH dehydrogenase [ubiquinone] 1 alpha subcomplex subunit 7, NADH-ubiquinone oxidoreductase subunit B14.5a, NDUFA7

Official Symbol: NDUFA7

Accession Number(s): NP_004992.2

Human GeneID(s): [4701](#)

Immunogen

Peptide with sequence C-RYQEISKRTQPP, from the internal region of the protein sequence according to NP_004992.2.

Please note the [peptide](#) is available for sale.

Purification and Storage

Purified from goat serum by ammonium sulphate precipitation followed by antigen affinity chromatography using the immunizing peptide.

Supplied at 0.5 mg/ml in Tris saline, 0.02% sodium azide, pH7.3 with 0.5% bovine serum albumin.

Aliquot and store at -20°C. Minimize freezing and thawing.

Applications Tested

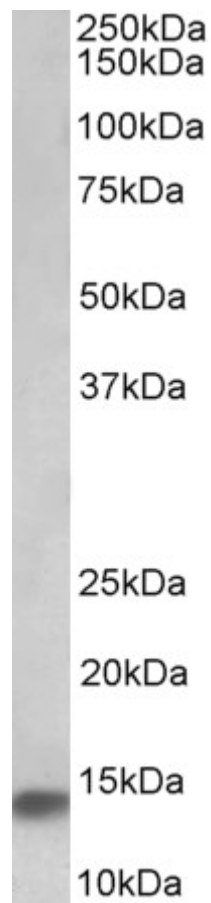
Peptide ELISA: antibody detection limit dilution 1:128000.

Western blot: Approx 14kDa band observed in Human Heart lysates (calculated MW of 12.6kDa according to NP_004992.2). Recommended concentration: 0.1-0.3µg/ml.

Species Reactivity

Tested: Human

Expected from sequence similarity: Human, Pig, Cow



EB11684 (0.1 μ g/ml) staining of Human Heart lysate (35 μ g protein in RIPA buffer). Primary incubation was 1 hour. Detected by chemiluminescence.