



UK Office

Everest Biotech Ltd

Cherwell Innovation Centre
77 Heyford Park
Upper Heyford
Oxfordshire
OX25 5HD
UK

Enquiries:

info@everestbiotech.com

Sales:

sales@everestbiotech.com

Tech support:

support@everestbiotech.com

Tel: +44 (0)1869 238326

www.everestbiotech.com

**Research Use Only. Not for
diagnostic or therapeutic use.**

EB11683 - Goat Anti-NDUFA7 Antibody

Size: 100µg specific antibody in 200µl



Target Protein

Principal Names: B14.5a, CI-B14.5a, complex I B14.5a subunit, NADH dehydrogenase (ubiquinone) 1 alpha subcomplex, 7, 14.5kDa, NADH dehydrogenase [ubiquinone] 1 alpha subcomplex subunit 7, NADH-ubiquinone oxidoreductase subunit B14.5a, NDUFA7

Official Symbol: NDUFA7

Accession Number(s): NP_004992.2

Human GeneID(s): [4701](#)

Non-Human GeneID(s): 66416 (mouse), 299643 (rat)

Immunogen

Peptide with sequence C-PKLPVGPESHKLSNN, from the internal region of the protein sequence according to NP_004992.2.

Please note the [peptide](#) is available for sale.

Purification and Storage

Purified from goat serum by ammonium sulphate precipitation followed by antigen affinity chromatography using the immunizing peptide.

Supplied at 0.5 mg/ml in Tris saline, 0.02% sodium azide, pH7.3 with 0.5% bovine serum albumin.

Aliquot and store at -20°C. Minimize freezing and thawing.

Applications Tested

Peptide ELISA: antibody detection limit dilution 1:128000.

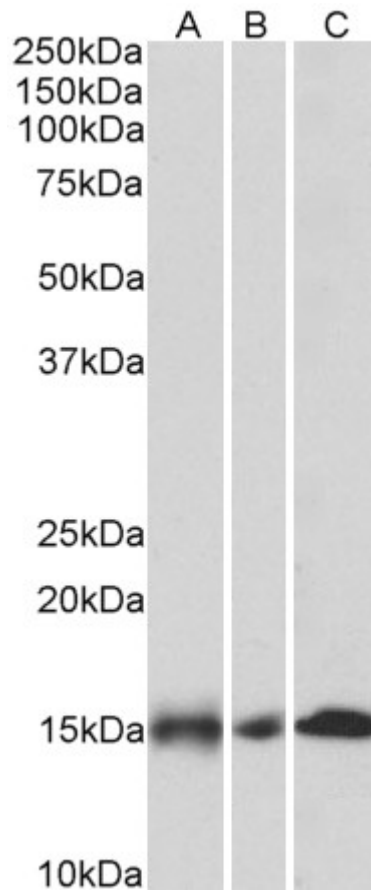
Western blot: Approx 15kDa band observed in Human, Mouse, Rat and Pig Heart lysates (calculated MW of 12.6kDa according to NP_004992.2). Recommended concentration: 0.03-0.1µg/ml. Primary incubation was 1 hour.

IHC: In paraffin embedded Human Heart shows mitochondrial staining in cardiac fibres. Recommended concentration: 4-8µg/ml.

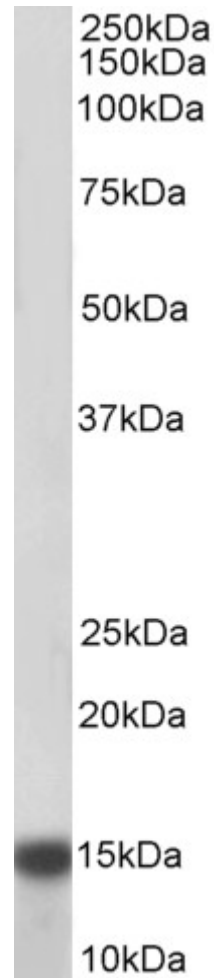
Species Reactivity

Tested: Human, Mouse, Rat, Pig

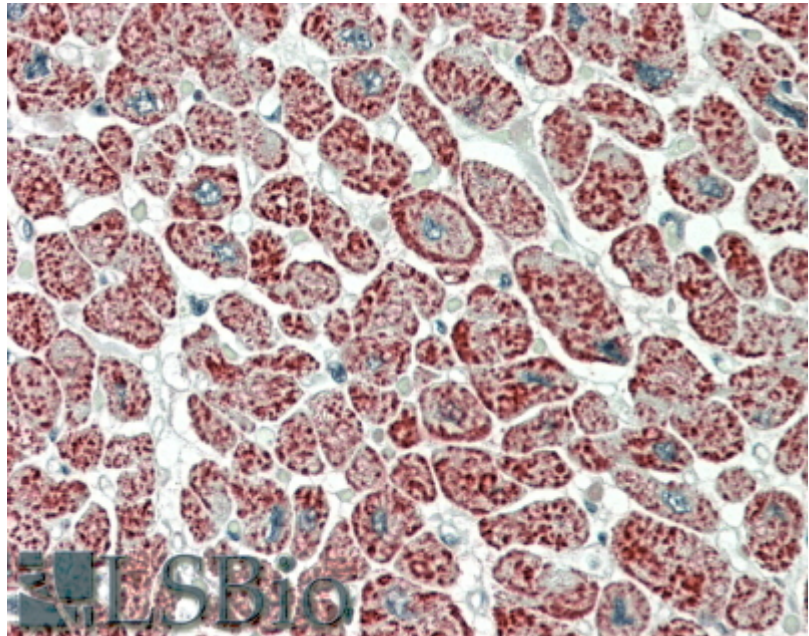
Expected from sequence similarity: Human, Mouse, Rat, Pig, Cow



EB11683 (0.1 μ g/ml) staining of Human (A), Mouse (B) and Rat (C) Heart lysates (35 μ g protein in RIPA buffer).
Detected by chemiluminescence.



EB11683 (0.1µg/ml) staining of Pig Heart lysate (35µg protein in RIPA buffer). Detected by chemiluminescence.



EB11683 (5µg/ml) staining of paraffin embedded Human Heart. Steamed antigen retrieval with citrate buffer pH 6, AP-staining.