

International Office

Everest Biotech Ltd

Vector Laboratories, Inc.
6737 Mowry Ave
Newark, CA 94560
United States

Customer Service:

customerservice@vectorlabs.com

Technical Service:

technical@vectorlabs.com

Tel: +1 (800) 227-6666

www.everestbiotech.com

**Research Use Only. Not for
diagnostic or therapeutic use.**

EB10188 - Goat Anti-NDUFS1 Antibody

Size: 100µg specific antibody in 200µl



Target Protein

Principal Names: CI-75Kd, complex I, mitochondrial respirato, MGC26839, NADH dehydrogenase (ubiquinone) Fe-S protein 1, 75kDa, NADH dehydrogenase (ubiquinone) Fe-S protein 1, 75kDa (NADH-coenzyme Q reductase), NADH-coenzyme Q reductase, OTTHUMP00000206345, PRO1304, NDUFS1

Official Symbol: NDUFS1

Accession Number(s): NP_004997.4; NP_001186910.1; NP_001186911.1; NP_001186912.1; NP_001186913.1

Human GeneID(s): [4719](#)

Non-Human GeneID(s): 227197 (mouse), 301458 (rat)

Important Comments: This antibody is expected to recognise isoforms NP_004997.4; NP_001186910.1; NP_001186911.1; NP_001186912.1; NP_001186913.1

Immunogen

Peptide with sequence C-TEKSATYVNTTEGR, from the internal region of the protein sequence according to NP_004997.4; NP_001186910.1; NP_001186911.1; NP_001186912.1; NP_001186913.1.

Please note the [peptide](#) is available for sale.

Purification and Storage

Purified from goat serum by ammonium sulphate precipitation followed by antigen affinity chromatography using the immunizing peptide.

Supplied at 0.5 mg/ml in Tris saline, 0.02% sodium azide, pH7.3 with 0.5% bovine serum albumin.

Aliquot and store at -20°C. Minimize freezing and thawing.

Applications Tested

Peptide ELISA: antibody detection limit dilution 1:64000.

Western blot: Approx. 75kDa band observed in lysates of cell lines HEK293 and NIH3T3 and in Rat Heart lysates, and approx. 80kDa in Human and Mouse Heart and in Human Skeletal Muscle lysates (calculated MW of 79.5kDa according to Human NP_004997.4 and Rat NP_001005550.1, 75.4kDa according to Human NP_001186910.1, and 79.8kDa according to Mouse NP_001153510.1). Recommended concentration: 0.1-0.5µg/ml. Primary incubation 1 hour at room temperature.

IHC: Paraffin embedded Human Heart. Recommended concentration: 5µg/ml.

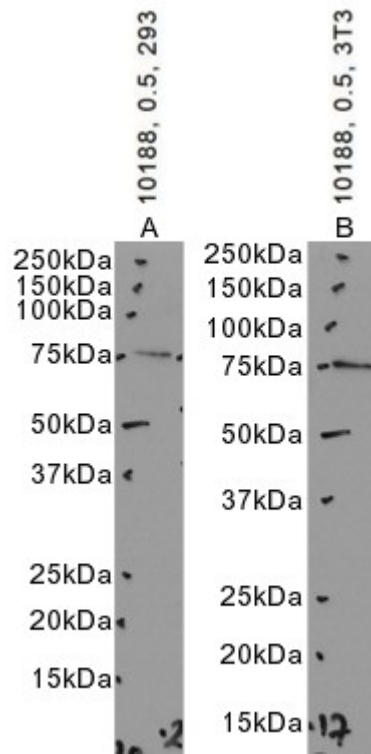
Immunofluorescence: Strong expression of the protein seen in U2OS cells. Recommended concentration: 10µg/ml.

Flow Cytometry: Flow cytometric analysis of HEK293 cells. Recommended concentration: 10ug/ml.

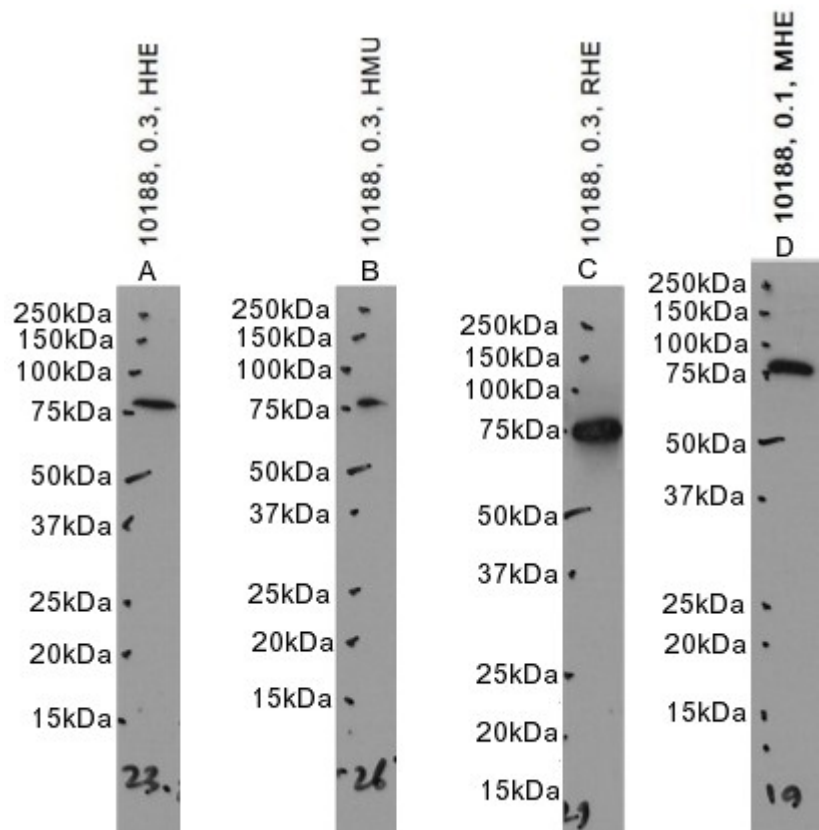
Species Reactivity

Tested: Human, Mouse, Rat

Expected from sequence similarity: Human, Mouse, Rat, Cow

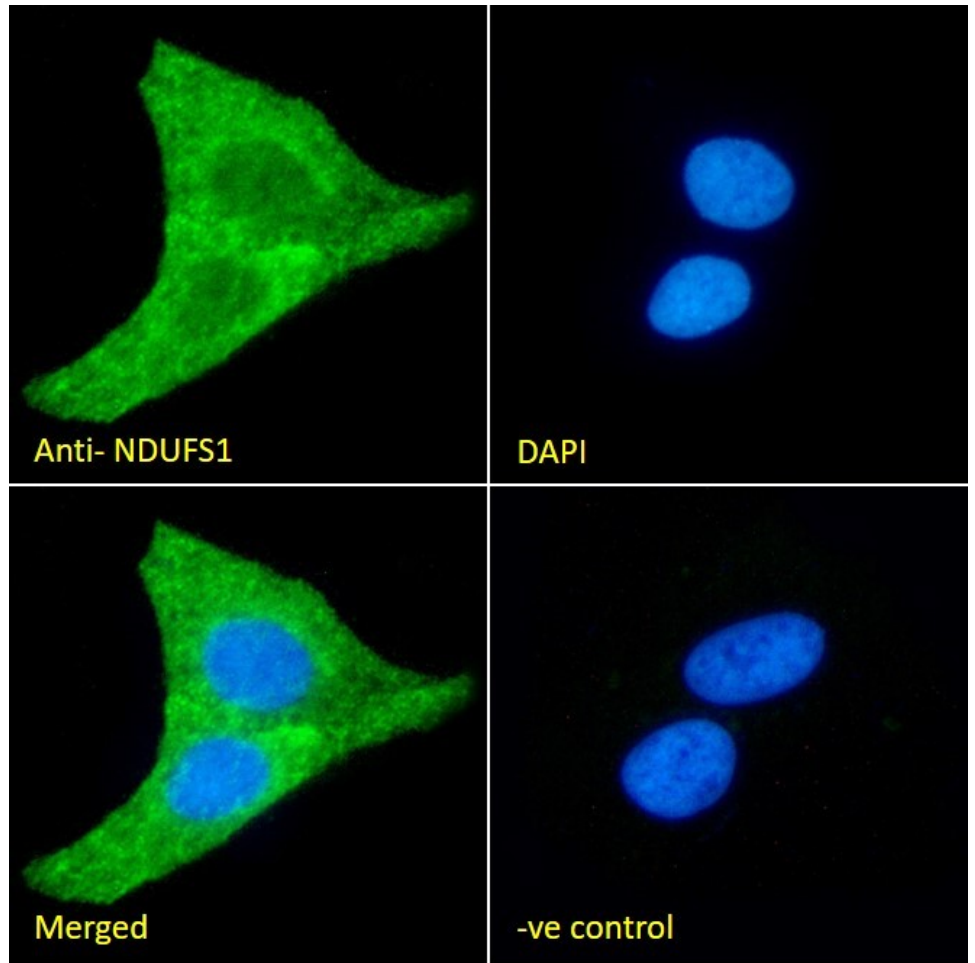


EB10188 optimised QC. Primary incubation 1 hour at room temperature.
 Images A, B: HEK293, NIH3T3 cell lysate at primary Ab concentration 0.5ug/ml. (Loaded 35µg protein in RIPA buffer, per lane). Detected by chemiluminescence.

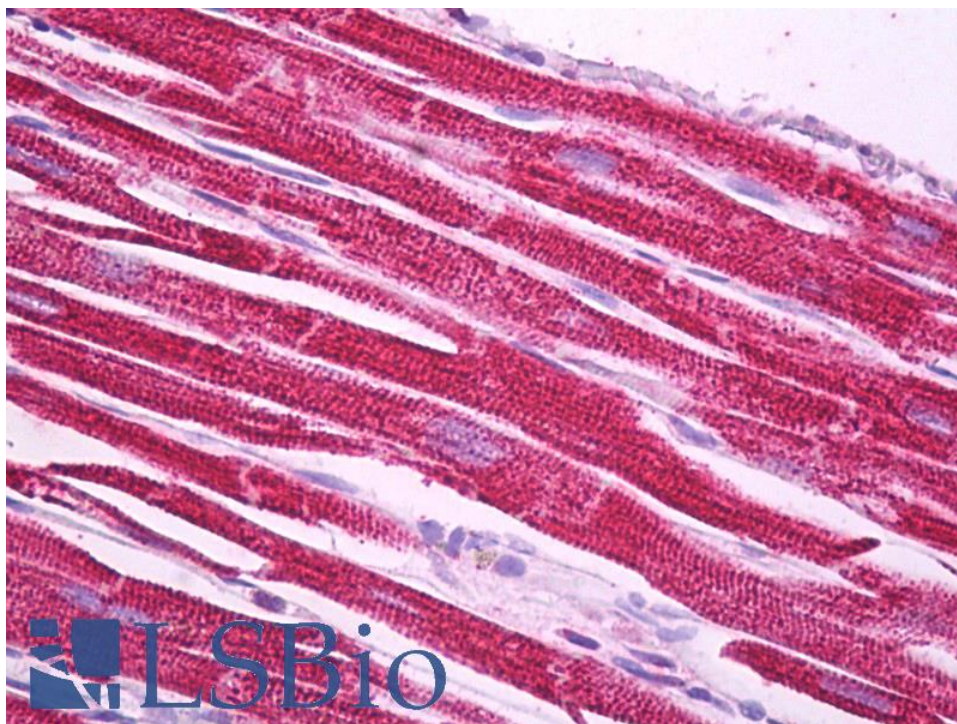


EB10188 optimised QC. Primary incubation 1 hour at room temperature.
 Images A, B, C: Human Heart, Human Skeletal Muscle, Rat Heart lysate at primary Ab concentration 0.3ug/ml. Image D: Mouse Heart lysate at primary Ab concentration

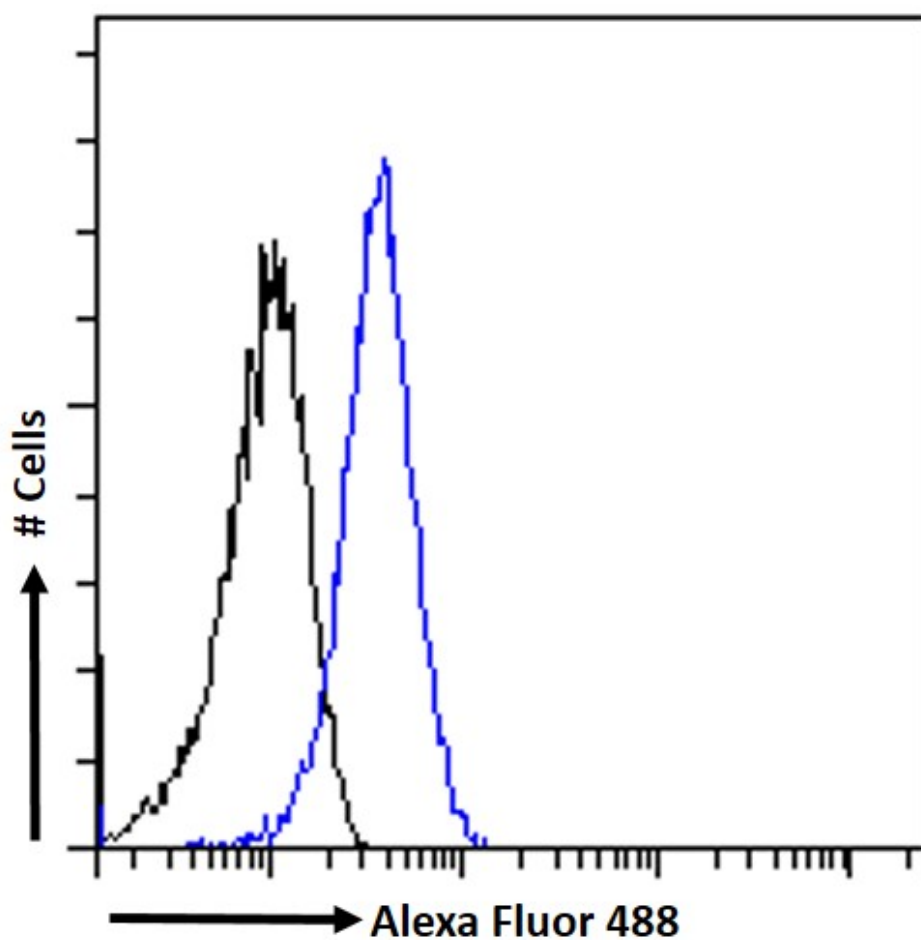
0.1ug/ml (Loaded 35µg protein in RIPA buffer, per lane). Detected by chemiluminescence.



EB10188 Immunofluorescence analysis of paraformaldehyde fixed U2OS cells, permeabilized with 0.15% Triton. Primary incubation 1hr (10ug/ml) followed by Alexa Fluor 488 secondary antibody (2ug/ml), showing mitochondria/cytoplasmic staining. The nuclear stain is DAPI (blue). Negative control: Unimmunized goat IgG (10ug/ml) followed by Alexa Fluor 488 secondary antibody (2ug/ml).



EB10188 (5µg/ml) staining of paraffin embedded Human Heart. Steamed antigen retrieval with citrate buffer pH 6, AP-staining.



EB10188 Flow cytometric analysis of paraformaldehyde fixed HEK293 cells (blue line), permeabilized with 0.5% Triton. Primary incubation 1hr (10ug/ml) followed by Alexa Fluor 488 secondary antibody (1ug/ml). IgG control:

Unimmunized goat IgG (black line) followed by Alexa Fluor 488 secondary antibody.