



## UK Office

### Everest Biotech Ltd

Cherwell Innovation Centre  
77 Heyford Park  
Upper Heyford  
Oxfordshire  
OX25 5HD  
UK

Enquiries:

[info@everestbiotech.com](mailto:info@everestbiotech.com)

Sales:

[sales@everestbiotech.com](mailto:sales@everestbiotech.com)

Tech support:

[support@everestbiotech.com](mailto:support@everestbiotech.com)

Tel: +44 (0)1869 238326

[www.everestbiotech.com](http://www.everestbiotech.com)

**Research Use Only. Not for  
diagnostic or therapeutic use.**

## EB10193 - Goat Anti-NDUFS8 Antibody

Size: 100µg specific antibody in 200µl



### Target Protein

**Principal Names:** CI23KD, complex I-23kD, NADH dehydrogenase (ubiquinone) Fe-S protein 8, 23kDa (NADH-coenzyme Q reductase), NADH dehydrogenase ubiquinone Fe-S 8, NADH-ubiquinone oxidoreductase 23 kDa subunit, TYKY, NDUFS8

**Official Symbol:** NDUFS8

**Accession Number(s):** NP\_002487.1

**Human GeneID(s):** [4728](#)

**Non-Human GeneID(s):** 225887 (mouse), 293652 (rat)

### Immunogen

Peptide with sequence C-EAEIAANIQAD, from the internal region of the protein sequence according to NP\_002487.1.

Please note the [peptide](#) is available for sale.

### Purification and Storage

Purified from goat serum by ammonium sulphate precipitation followed by antigen affinity chromatography using the immunizing peptide.

Supplied at 0.5 mg/ml in Tris saline, 0.02% sodium azide, pH7.3 with 0.5% bovine serum albumin.

Aliquot and store at -20°C. Minimize freezing and thawing.

### Applications Tested

**Peptide ELISA:** antibody detection limit dilution 1:4000.

**Western blot:** Approx. 25kDa band observed in Rat Heart and Brain lysates and in preliminary testing of Rat Kidney, Human Heart lysate and A549 cell lysate (calculated MW of 24kDa according to Rat : NP\_001099792.1). Recommended concentration: 0.5-2µg/ml. Primary incubation 1 hour at room temperature.

**Immunofluorescence:** Strong expression of the protein seen in the cytoplasm of A431 cells. Recommended concentration: 10µg/ml.

**Flow Cytometry:** Flow cytometric analysis of A431 cells. Recommended concentration: 10ug/ml.

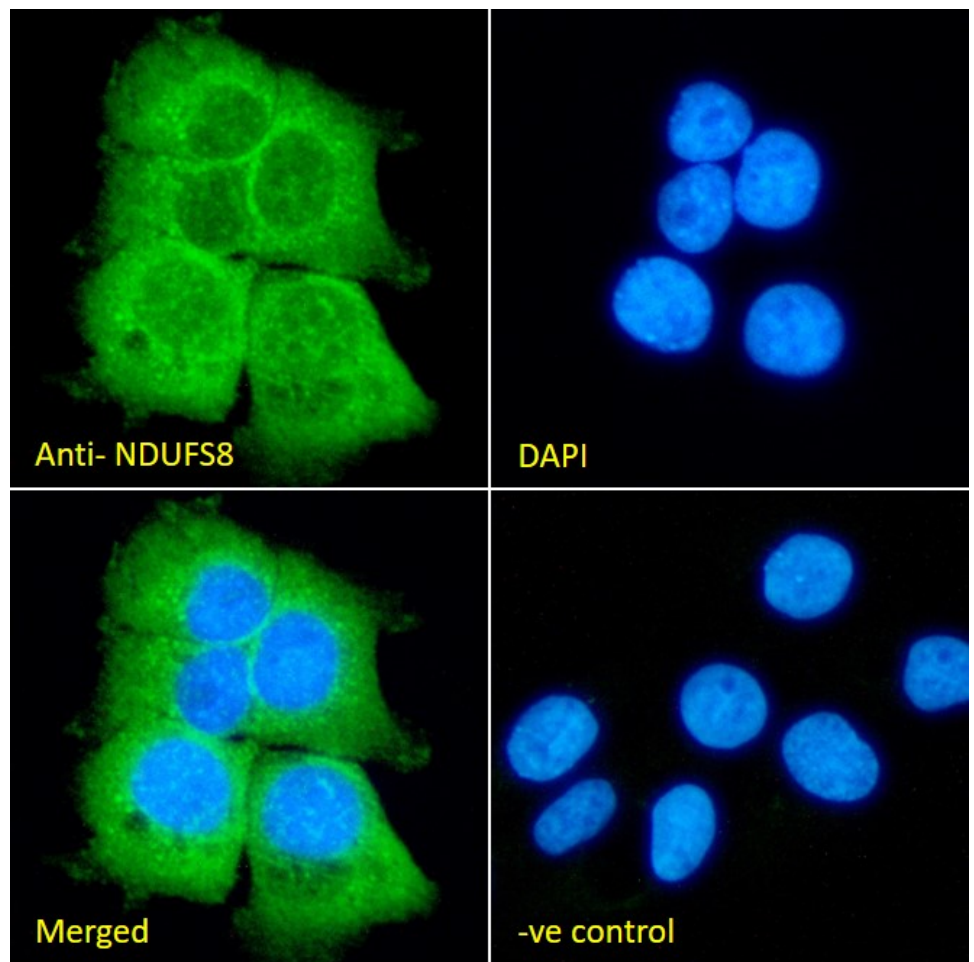
### Species Reactivity

**Tested:** Human, Rat

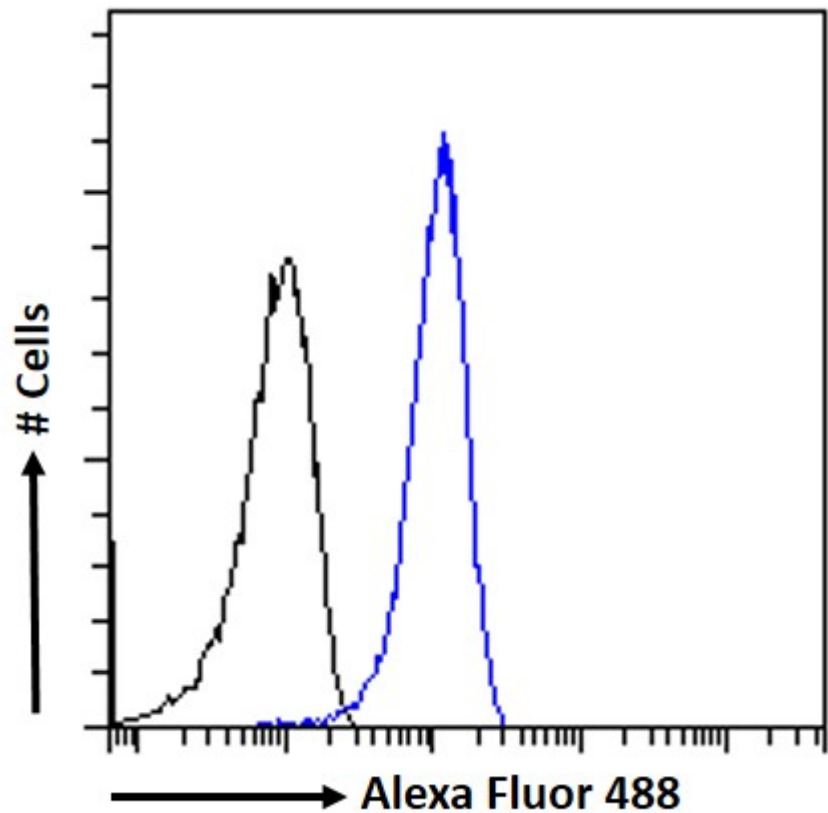
**Expected from sequence similarity:** Human, Mouse, Rat, Dog, Cow



EB10193 (0.5 $\mu$ g/ml) staining of Rat Heart (A) and (2 $\mu$ g/ml) Rat Brain (B) lysate (35 $\mu$ g protein in RIPA buffer). Detected by chemiluminescence.



EB10193 Immunofluorescence analysis of paraformaldehyde fixed A431 cells, permeabilized with 0.15% Triton. Primary incubation 1hr (10ug/ml) followed by Alexa Fluor 488 secondary antibody (2ug/ml), showing cytoplasmic staining. The nuclear stain is DAPI (blue). Negative control: Unimmunized goat IgG (10ug/ml) followed by Alexa Fluor 488 secondary antibody (2ug/ml).



EB10193 Flow cytometric analysis of paraformaldehyde fixed A431 cells (blue line), permeabilized with 0.5% Triton. Primary incubation 1hr (10ug/ml) followed by Alexa Fluor 488 secondary antibody (1ug/ml). IgG control: Unimmunized goat IgG (black line) followed by Alexa Fluor 488 secondary antibody.