

UK Office

Everest Biotech Ltd

Cherwell Innovation Centre
77 Heyford Park
Upper Heyford
Oxfordshire
OX25 5HD
UK

Enquiries:

info@everestbiotech.com

Sales:

sales@everestbiotech.com

Tech support:

support@everestbiotech.com

Tel: +44 (0)1869 238326

www.everestbiotech.com

**Research Use Only. Not for
diagnostic or therapeutic use.**

EB10869 - Goat Anti-NEDD8 conjugating enzyme (N Terminus) Antibody

Size: 100µg specific antibody in 200µl



Target Protein

Principal Names: UBE2F, ubiquitin-conjugating enzyme E2F (putative), MGC18120, NCE2, NEDD8 carrier protein UBE2F, NEDD8 conjugating enzyme, NEDD8 protein ligase UBE2F, NEDD8-conjugating enzyme 2, NEDD8-conjugating enzyme UBE2F, OTTHUMP00000202755, OTTH

Official Symbol: UBE2F

Accession Number(s): NP_542409.1

Human GeneID(s): [140739](#)

Non-Human GeneID(s): 67921 (mouse), 363284 (rat)

Immunogen

Peptide with sequence SKLKRDDGLKGSRT-C, from the N Terminus of the protein sequence according to NP_542409.1.

Please note the [peptide](#) is available for sale.

Purification and Storage

Purified from goat serum by ammonium sulphate precipitation followed by antigen affinity chromatography using the immunizing peptide.

Supplied at 0.5 mg/ml in Tris saline, 0.02% sodium azide, pH7.3 with 0.5% bovine serum albumin.

Aliquot and store at -20°C. Minimize freezing and thawing.

Applications Tested

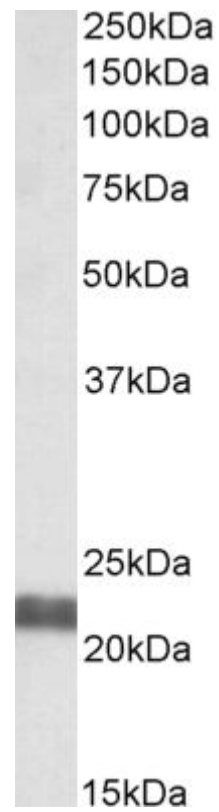
Peptide ELISA: antibody detection limit dilution 1:32000.

Western blot: Approx 22kDa band observed in Rat Pancreas lysates (calculated MW of 21.1kDa according to Human NP_542409.1 and 18.6kDa according to Rat NP_001008382.1). Recommended concentration: 0.05-0.2µg/ml.

Species Reactivity

Tested: Rat

Expected from sequence similarity: Human, Mouse, Rat, Dog, Pig, Cow



EB10869 (0.05µg/ml) staining of Rat Pancreas lysate (35µg protein in RIPA buffer). Primary incubation was 1 hour. Detected by chemiluminescence.