

UK Office

Everest Biotech Ltd

Cherwell Innovation Centre
77 Heyford Park
Upper Heyford
Oxfordshire
OX25 5HD
UK

Enquiries:

info@everestbiotech.com

Sales:

sales@everestbiotech.com

Tech support:

support@everestbiotech.com

Tel: +44 (0)1869 238326

www.everestbiotech.com

**Research Use Only. Not for
diagnostic or therapeutic use.**

EB13051 - Goat Anti-NEFL (aa330-343) Antibody

Size: 100µg specific antibody in 200µl



Target Protein

Principal Names: NEFL, neurofilament, light polypeptide, CMT1F, CMT2E, NF-L, NF68, NFL, PPP1R110, light molecular weight neurofilament protein, neurofilament protein, light chain, neurofilament subunit NF-L, neurofilament triplet L protein, neurofilament, light polypeptide 68kDa, protein phosphatase 1, regulatory subunit 110

Official Symbol: NEFL

Accession Number(s): NP_006149.2

Human GeneID(s): [4747](#)

Non-Human GeneID(s): 18039 (mouse), 83613 (rat)

Immunogen

Peptide with sequence C-EKQLQELEDKQNAD, from the internal region of the protein sequence according to NP_006149.2.

Please note the [peptide](#) is available for sale.

Purification and Storage

Purified from goat serum by ammonium sulphate precipitation followed by antigen affinity chromatography using the immunizing peptide.

Supplied at 0.5 mg/ml in Tris saline, 0.02% sodium azide, pH7.3 with 0.5% bovine serum albumin.

Aliquot and store at -20°C. Minimize freezing and thawing.

Applications Tested

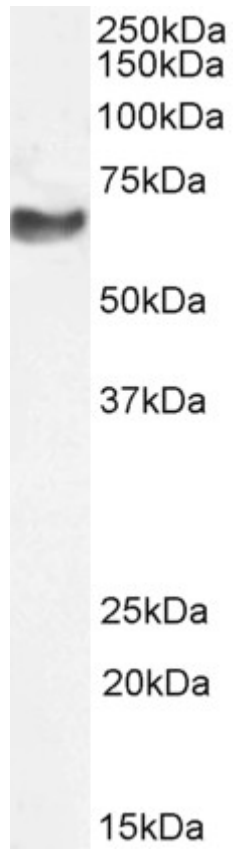
Peptide ELISA: antibody detection limit dilution 1:4000.

Western blot: Approx 68-70kDa band observed in lysates of Neuroblastoma cell line KELLY (calculated MW of 61.5kDa according to NP_006149.2). This molecular weight is routinely observed by other sources. Recommended concentration: 0.3-1µg/ml.

Species Reactivity

Tested: Human

Expected from sequence similarity: Human, Mouse, Rat, Dog, Pig, Cow



EB13051 (1 μ g/ml) staining of Neuroblastoma KELLY lysate (35 μ g protein in RIPA buffer). Primary incubation was 1 hour. Detected by chemiluminescence.