



UK Office

Everest Biotech Ltd

Cherwell Innovation Centre
77 Heyford Park
Upper Heyford
Oxfordshire
OX25 5HD
UK

Enquiries:

info@everestbiotech.com

Sales:

sales@everestbiotech.com

Tech support:

support@everestbiotech.com

Tel: +44 (0)1869 238326

Fax: +44 (0)1869 238327

US Office

Everest Biotech c/o Abcore

405 Maple Street, Suite A106
Ramona,
CA 92065
USA

Inquiries:

info@everestbiotech.com

Sales:

usasales@everestbiotech.com

Tech support:

support@everestbiotech.com

Tel: 888-320-4628 (toll-free)

Fax: 888-841-9041

www.everestbiotech.com

**Research Use Only. Not for
diagnostic or therapeutic use.**

EB09641 - Goat Anti-NEFM / NF-M Antibody

Size: 100µg specific antibody in 200µl



Target Protein

Principal Names: NEFM, neurofilament, medium polypeptide, NEF3, NF-M, NFM, neurofilament triplet M protein, neurofilament, medium polypeptide 150kDa, neurofilament-3 (150 kD medium)

Official Symbol: NEFM

Accession Number(s): NP_005373.2

Human GeneID(s): [4741](#)

Non-Human GeneID(s): 18040 (mouse), 24588 (rat)

Important Comments: This antibody is expected to recognize reported isoform 1 (NP_005373.2) only.

Immunogen

Peptide with sequence C-QASHITVERKDYLK, from the internal region of the protein sequence according to NP_005373.2.

Please note the [peptide](#) is available for sale.

Purification and Storage

Purified from goat serum by ammonium sulphate precipitation followed by antigen affinity chromatography using the immunizing peptide.

Supplied at 0.5 mg/ml in Tris saline, 0.02% sodium azide, pH7.3 with 0.5% bovine serum albumin.

Aliquot and store at -20°C. Minimize freezing and thawing.

Applications Tested

Peptide ELISA: antibody detection limit dilution 1:128000.

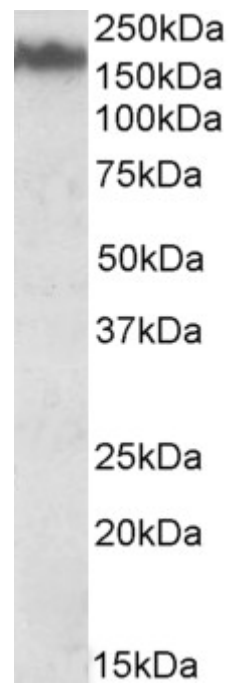
Western blot: Approx 170-200kDa band observed in Mouse Brain lysates (calculated MW of 102kDa according to NP_005373.2). This molecular weight is routinely observed by other sources. Recommended concentration: 0.03-0.1µg/ml. Primary incubation was 1 hour.

IHC: Paraffin embedded Human Brain (Cortex). Recommended concentration: 5µg/ml.

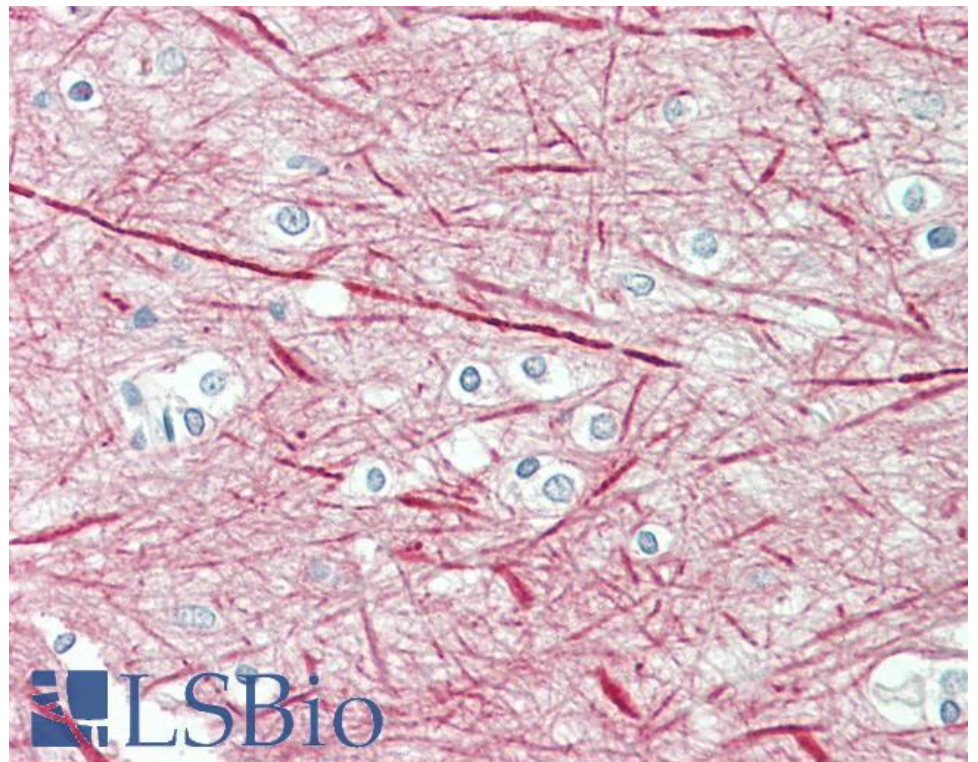
Species Reactivity

Tested: Human, Mouse

Expected from sequence similarity: Human, Mouse, Rat, Dog, Pig, Cow



EB09641 (0.03 μ g/ml) staining of Mouse Brain lysate (35 μ g protein in RIPA buffer). Detected by chemiluminescence.



EB09641 (5 μ g/ml) staining of paraffin embedded Human Cortex. Steamed antigen retrieval with citrate buffer pH 6, AP-staining.