



Everest Biotech Ltd  
Cherwell Innovation Centre  
77 Heyford Park  
Upper Heyford  
Oxfordshire  
OX25 5HD, United Kingdom

[everestbiotech.com](http://everestbiotech.com)

[sales@everestbiotech.com](mailto:sales@everestbiotech.com)

[support@everestbiotech.com](mailto:support@everestbiotech.com)

Tel +44 1869 238326

Fax +44 1869 238327

**Research Use Only. Not for diagnostic or therapeutic use.**

Storage: For long-term storage keep aliquots at -20°C. (Store no longer than 12 months at 4°C). Minimize freezing and thawing.

## EB05859 - Goat Anti-NEIL1 / NEH1 Antibody

Size: 100µg specific antibody in 200µl



### Target Protein

**Principal Names:** nei endonuclease VIII-like 1, hFPG1, FPG1, endonuclease VIII, FLJ22402, NEI1, nei endonuclease VIII-like 1 (E. coli), NEH1, NEIL1

**Official Symbol:** NEIL1

**Accession Number(s):** NP\_078884.2

**Human GeneID(s):** [79661](#)

### Immunogen

Peptide with sequence C-DIPSLEPEGTSAS, from the C Terminus of the protein sequence according to NP\_078884.2.

Please note the [peptide](#) is available for sale.

### Purification and Storage

Purified from goat serum by ammonium sulphate precipitation followed by antigen affinity chromatography using the immunizing peptide.

Supplied at 0.5 mg/ml in Tris saline, 0.02% sodium azide, pH7.3 with 0.5% bovine serum albumin.

Aliquot and store at -20°C. Minimize freezing and thawing.

### Applications Tested

**Peptide ELISA:** antibody detection limit dilution 1:16000.

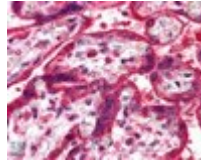
**Western blot:** Preliminary experiments gave an approx 60kDa band in Human Liver and Brain lysates at 1ug/ml. Please note that currently we cannot find an explanation in the literature for the band we observe given the calculated size of 43.7kDda according to NP\_078884.1. We would appreciate any feedback from people in the field - have any results been reported with other antibodies/lysates? Have any further splice variants/modified forms been reported?

**IHC:** In paraffin embedded Human Placenta shows strong staining of cytoplasm in syncytiotrophoblasts. Recommended concentration, 5-10µg/ml.

### Species Reactivity

**Tested:** Human

**Expected from sequence similarity:** Human, Pig, Cow



EB05859 (5 $\mu$ g/ml) staining of paraffin embedded Human Placenta. Steamed antigen retrieval with citrate buffer pH 6, AP-staining.