

## UK Office

### Everest Biotech Ltd

Cherwell Innovation Centre  
77 Heyford Park  
Upper Heyford  
Oxfordshire  
OX25 5HD  
UK

Enquiries:

[info@everestbiotech.com](mailto:info@everestbiotech.com)

Sales:

[sales@everestbiotech.com](mailto:sales@everestbiotech.com)

Tech support:

[support@everestbiotech.com](mailto:support@everestbiotech.com)

Tel: +44 (0)1869 238326

[www.everestbiotech.com](http://www.everestbiotech.com)

**Research Use Only. Not for  
diagnostic or therapeutic use.**

## EB10519 - Goat Anti-NEK7 Antibody

Size: 100µg specific antibody in 200µl



### Target Protein

**Principal Names:** NIMA (never in mitosis gene a)-related kinase 7, NIMA-related kinase 7, NEK7

**Official Symbol:** NEK7

**Accession Number(s):** NP\_598001.1

**Human GeneID(s):** [140609](#)

**Non-Human GeneID(s):** 59125 (mouse), 360850 (rat)

### Immunogen

Peptide with sequence C-NTLANFRIEKK, from the internal region of the protein sequence according to NP\_598001.1.

Please note the [peptide](#) is available for sale.

### Purification and Storage

Purified from goat serum by ammonium sulphate precipitation followed by antigen affinity chromatography using the immunizing peptide.

Supplied at 0.5 mg/ml in Tris saline, 0.02% sodium azide, pH7.3 with 0.5% bovine serum albumin.

Aliquot and store at -20°C. Minimize freezing and thawing.

### Applications Tested

**Peptide ELISA:** antibody detection limit dilution 1:64000.

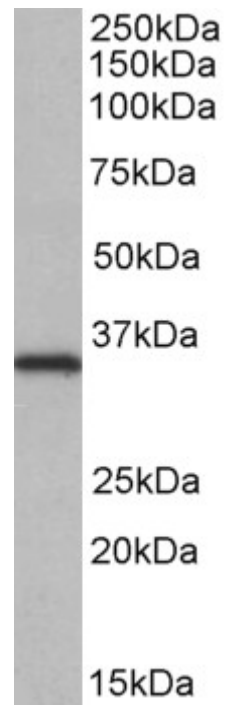
**Western blot:** Approx 35kDa band observed in lysates of cell line HeLa (calculated MW of 34.6kDa according to NP\_598001.1). Recommended concentration: 0.05-0.2µg/ml. Primary incubation was 1 hour.

**IHC:** Paraffin embedded Human Thyroid. Recommended concentration: 3.75µg/ml.

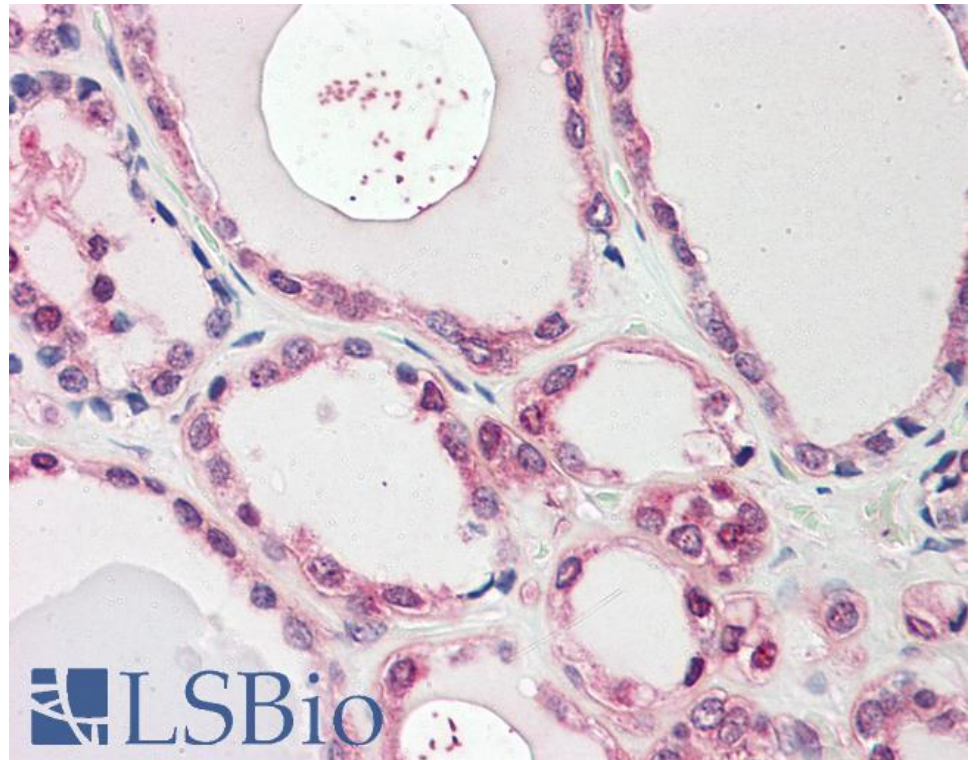
### Species Reactivity

**Tested:** Human

**Expected from sequence similarity:** Human, Mouse, Rat, Dog, Cow



EB10519 (0.05 $\mu$ g/ml) staining of HeLa lysate (35 $\mu$ g protein in RIPA buffer). Detected by chemiluminescence.



EB10519 (3.75 $\mu$ g/ml) staining of paraffin embedded Human Thyroid. Steamed antigen retrieval with citrate buffer pH 6, AP-staining.