



## UK Office

### Everest Biotech Ltd

Cherwell Innovation Centre  
77 Heyford Park  
Upper Heyford  
Oxfordshire  
OX25 5HD  
UK

Enquiries:

[info@everestbiotech.com](mailto:info@everestbiotech.com)

Sales:

[sales@everestbiotech.com](mailto:sales@everestbiotech.com)

Tech support:

[support@everestbiotech.com](mailto:support@everestbiotech.com)

Tel: +44 (0)1869 238326

[www.everestbiotech.com](http://www.everestbiotech.com)

**Research Use Only. Not for  
diagnostic or therapeutic use.**

## EB12278 - Goat Anti-NELL2 Antibody

Size: 100µg specific antibody in 200µl



### Target Protein

**Principal Names:** NELL2, NEL-like 2 (chicken), NRP2, NEL-like protein 2, NEL-related protein 2, neural epidermal growth factor-like 2, protein kinase C-binding protein NELL2

**Official Symbol:** NELL2

**Accession Number(s):** NP\_001138579.1; NP\_006150.1; NP\_001138581.1;  
NP\_001138582.1

**Human GeneID(s):** [4753](#)

**Non-Human GeneID(s):** 54003 (mouse), 81734 (rat)

**Important Comments:** This antibody is expected to recognize all reported isoforms (NP\_001138579.1; NP\_006150.1; NP\_001138581.1; NP\_001138582.1). Reported variants represent identical protein: NP\_001138580.1, NP\_006150.1.

### Immunogen

Peptide with sequence DPCQADTIRNDITKT, from the internal region (near C terminus) of the protein sequence according to NP\_001138579.1; NP\_006150.1; NP\_001138581.1; NP\_001138582.1.

Please note the [peptide](#) is available for sale.

### Purification and Storage

Purified from goat serum by ammonium sulphate precipitation followed by antigen affinity chromatography using the immunizing peptide.

Supplied at 0.5 mg/ml in Tris saline, 0.02% sodium azide, pH7.3 with 0.5% bovine serum albumin.

Aliquot and store at -20°C. Minimize freezing and thawing.

### Applications Tested

**Peptide ELISA:** antibody detection limit dilution 1:64000.

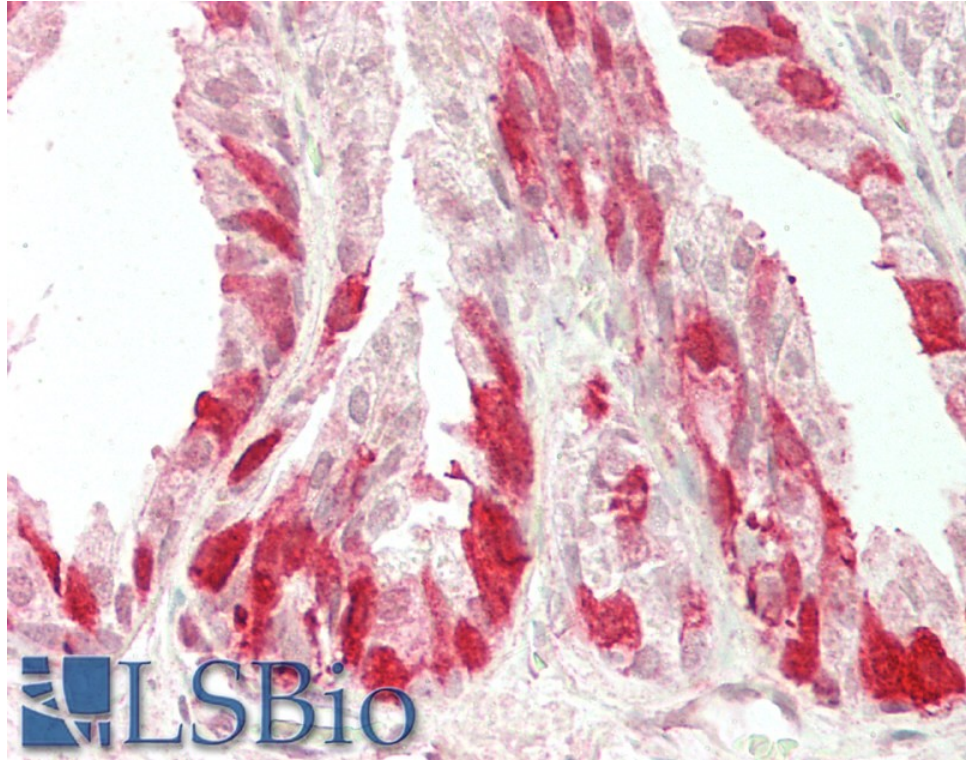
**Western blot:** Preliminary experiments gave an approx 80kDa band in Human Brain (cortex and hippocampus) lysates after 0.5µg/ml antibody staining. Please note that currently we cannot find an explanation in the literature for the band we observe given the calculated size of 94.7kDa for the mature form (aa22-866) according to NP\_001138579.1 and 88.8kDa (aa22-816) according to NP\_001138580.1. The 80kDa band was successfully blocked by incubation with the immunizing peptide.

**IHC:** Paraffin embedded Human Prostate. Recommended concentration: 5µg/ml.

### Species Reactivity

**Tested:** Human

**Expected from sequence similarity:** Human, Mouse, Rat, Dog, Pig, Cow



EB12278 (5µg/ml) staining of paraffin embedded Human Prostate. Steamed antigen retrieval with citrate buffer pH 6, AP-staining.