



Everest Biotech Ltd  
Cherwell Innovation Centre  
77 Heyford Park  
Upper Heyford  
Oxfordshire  
OX25 5HD, United Kingdom

[everestbiotech.com](http://everestbiotech.com)

[sales@everestbiotech.com](mailto:sales@everestbiotech.com)

[support@everestbiotech.com](mailto:support@everestbiotech.com)

Tel +44 1869 238326

Fax +44 1869 238327

**Research Use Only. Not for diagnostic or therapeutic use.**

Storage: For long-term storage keep aliquots at -20°C. (Store no longer than 12 months at 4°C). Minimize freezing and thawing.

## EB07268 - Goat Anti-NET1 / ARHGEF8 (Internal) Antibody

Size: 100µg specific antibody in 200µl



### Target Protein

**Principal Names:** small GTP-binding protein regulator, p65 Net1 proto-oncogene protein, neuroepithelioma transforming gene 1, guanine nucleotide regulatory protein (oncogene), Rho guanine nucleotide exchange factor (GEF) 8, NET1A, neuroepithelial cell transforming gene 1, ARHGEF8, NET1

**Official Symbol:** NET1

**Accession Number(s):** NP\_005854.2; NP\_001040625.1

**Human GeneID(s):** [10276](#)

**Non-Human GeneID(s):** 56349 (mouse), 307098 (rat)

**Important Comments:** This antibody is expected to recognize both reported isoforms (NP\_001040625.1 and NP\_005854.2).

### Immunogen

Peptide with sequence C-DKLEYLDEKQRDPR, from the internal region of the protein sequence according to NP\_005854.2; NP\_001040625.1.

Please note the [peptide](#) is available for sale.

### Purification and Storage

Purified from goat serum by ammonium sulphate precipitation followed by antigen affinity chromatography using the immunizing peptide.

Supplied at 0.5 mg/ml in Tris saline, 0.02% sodium azide, pH7.3 with 0.5% bovine serum albumin.

Aliquot and store at -20°C. Minimize freezing and thawing.

### Applications Tested

**Peptide ELISA:** antibody detection limit dilution 1:16000.

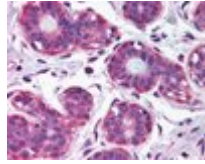
**Western blot:** Preliminary experiments gave an approx 80-90kDa double band in Human Placenta lysates after 0.3µg/ml antibody staining. Please note that currently we cannot find an explanation in the literature for the band we observe given the calculated size of 67.7kDa according to NP\_001040625.1. The 80-90kDa band was successfully blocked by incubation with the immunizing peptide. We would appreciate any feedback from people in the field - have any results been reported with other antibodies/lysates? Have any further splice variants/modified forms been reported?

**IHC:** In paraffin embedded Human Breast shows cytoplasm staining of myoepithelial cells of ducts. Recommended concentration, 2.5µg/ml.

### Species Reactivity

**Tested:** Human

**Expected from sequence similarity:** Human, Mouse, Rat, Dog



EB07268 (2.5 $\mu$ g/ml) staining of paraffin embedded Human Breast. Steamed antigen retrieval with citrate buffer pH 6, AP-staining.