



Everest Biotech Ltd
Cherwell Innovation Centre
77 Heyford Park
Upper Heyford
Oxfordshire
OX25 5HD, United Kingdom

everestbiotech.com

sales@everestbiotech.com

support@everestbiotech.com

Tel +44 1869 238326

Fax +44 1869 238327

Research Use Only. Not for diagnostic or therapeutic use.

Storage: For long-term storage keep aliquots at -20°C. (Store no longer than 12 months at 4°C). Minimize freezing and thawing.

EB05827 - Goat Anti-Neuro-d4 / DPF1 Antibody

Size: 100µg specific antibody in 200µl



Target Protein

Principal Names: neuro-d4 homolog, OTTHUMP00000211615, BAF45b, MGC150429, MGC150428, D4, zinc and double PHD fingers, family 1, Neuro-d4 (rat) homolog, D4, zinc and double PHD fingers family 1, neuro-d4, NEUD4, DPF1

Official Symbol: DPF1

Accession Number(s): NP_001128627.1; NP_004638.2; NP_001128628.1

Human GeneID(s): [8193](#)

Non-Human GeneID(s): 29861 (mouse), 50545 (rat)

Important Comments: This antibody is expected to recognize all three reported isoforms (NP_001128627.1; NP_004638.2; NP_001128628.1).

Immunogen

Peptide with sequence C-HLKEKASAYITLT, from the C Terminus of the protein sequence according to NP_001128627.1; NP_004638.2; NP_001128628.1.

Please note the [peptide](#) is available for sale.

Purification and Storage

Purified from goat serum by ammonium sulphate precipitation followed by antigen affinity chromatography using the immunizing peptide.

Supplied at 0.5 mg/ml in Tris saline, 0.02% sodium azide, pH7.3 with 0.5% bovine serum albumin.

Aliquot and store at -20°C. Minimize freezing and thawing.

Applications Tested

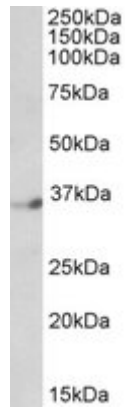
Peptide ELISA: antibody detection limit dilution 1:2000.

Western blot: Approx 35kDa band observed in Human Brain (Cerebellum) lysates (calculated MW of 37.9 according to NP_001128628.1). Recommended concentration: 1-3µg/ml.

Species Reactivity

Tested: Human

Expected from sequence similarity: Human, Mouse, Rat, Cow



EB05827(1µg/ml) staining of Human Brain (Cerebellum) lysate (35µg protein in RIPA buffer). Primary incubation was 1 hour. Detected by chemiluminescence.