



UK Office

Everest Biotech Ltd

Cherwell Innovation Centre
77 Heyford Park
Upper Heyford
Oxfordshire
OX25 5HD
UK

Enquiries:

info@everestbiotech.com

Sales:

sales@everestbiotech.com

Tech support:

support@everestbiotech.com

Tel: +44 (0)1869 238326

Fax: +44 (0)1869 238327

US Office

Everest Biotech c/o Abcore

405 Maple Street, Suite A106
Ramona,
CA 92065
USA

Inquiries:

info@everestbiotech.com

Sales:

usasales@everestbiotech.com

Tech support:

support@everestbiotech.com

Tel: 888-320-4628 (toll-free)

Fax: 888-841-9041

www.everestbiotech.com

**Research Use Only. Not for
diagnostic or therapeutic use.**

EB06147 - Goat Anti-Neurobeachin Antibody

Size: 100µg specific antibody in 200µl



Target Protein

Principal Names: NBEA, neurobeachin, RP11-270C18.1, BCL8B, FLJ10197, KIAA1544, LYST2, lysosomal trafficking regulator, lysosomal trafficking regulator 2

Official Symbol: NBEA

Accession Number(s): NP_056493.3; NP_001191126.1

Human GeneID(s): [26960](#)

Non-Human GeneID(s): 26422 (mouse)

Important Comments: This antibody is expected to recognise isoform 1 (NP_056493.3) and isoform 2 (NP_001191126.1).

Immunogen

Peptide with sequence C-DFNRWHYEHQNRV, from the C Terminus of the protein sequence according to NP_056493.3; NP_001191126.1.

Please note the [peptide](#) is available for sale.

Purification and Storage

Purified from goat serum by ammonium sulphate precipitation followed by antigen affinity chromatography using the immunizing peptide.

Supplied at 0.5 mg/ml in Tris saline, 0.02% sodium azide, pH7.3 with 0.5% bovine serum albumin.

Aliquot and store at -20°C. Minimize freezing and thawing.

Applications Tested

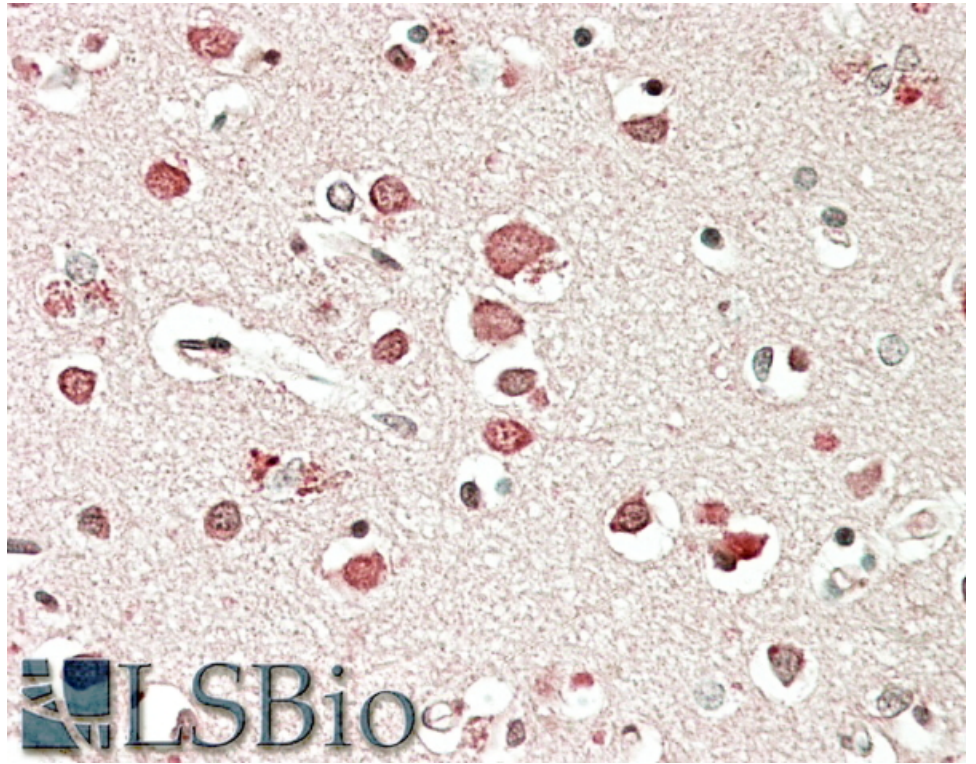
Peptide ELISA: antibody detection limit dilution 1:4000.

IHC: In paraffin embedded Human Cerebral Cortex shows textured cytoplasm staining in the neuronal cell bodies. Recommended concentration: 5-10µg/ml.

Species Reactivity

Tested: Human

Expected from sequence similarity: Human, Mouse, Dog, Cow



EB06147 (5µg/ml) staining of paraffin embedded Human Cerebral Cortex. Steamed antigen retrieval with citrate buffer pH 6, AP-staining.