

## UK Office

### Everest Biotech Ltd

Cherwell Innovation Centre  
77 Heyford Park  
Upper Heyford  
Oxfordshire  
OX25 5HD  
UK

Enquiries:

[info@everestbiotech.com](mailto:info@everestbiotech.com)

Sales:

[sales@everestbiotech.com](mailto:sales@everestbiotech.com)

Tech support:

[support@everestbiotech.com](mailto:support@everestbiotech.com)

Tel: +44 (0)1869 238326

[www.everestbiotech.com](http://www.everestbiotech.com)

**Research Use Only. Not for  
diagnostic or therapeutic use.**

## EB07600 - Goat Anti-Neurochondrin Antibody

Size: 100µg specific antibody in 200µl



### Target Protein

**Principal Names:** NCDN, neurochondrin, KIAA0607

**Official Symbol:** NCDN

**Accession Number(s):** NP\_055099.1; NP\_001014841.1

**Human GeneID(s):** [23154](#)

**Non-Human GeneID(s):** 26562 (mouse), 89791 (rat)

**Important Comments:** This antibody is expected to recognize both reported isoforms (NP\_055099.1; NP\_001014841.1). Reported variants represent identical protein (NP\_055099.1; NP\_001014839.1).

### Immunogen

Peptide with sequence C-HYLLQVGSEKQKEP, from the internal region of the protein sequence according to NP\_055099.1; NP\_001014841.1.

Please note the [peptide](#) is available for sale.

### Purification and Storage

Purified from goat serum by ammonium sulphate precipitation followed by antigen affinity chromatography using the immunizing peptide.

Supplied at 0.5 mg/ml in Tris saline, 0.02% sodium azide, pH7.3 with 0.5% bovine serum albumin.

Aliquot and store at -20°C. Minimize freezing and thawing.

### Applications Tested

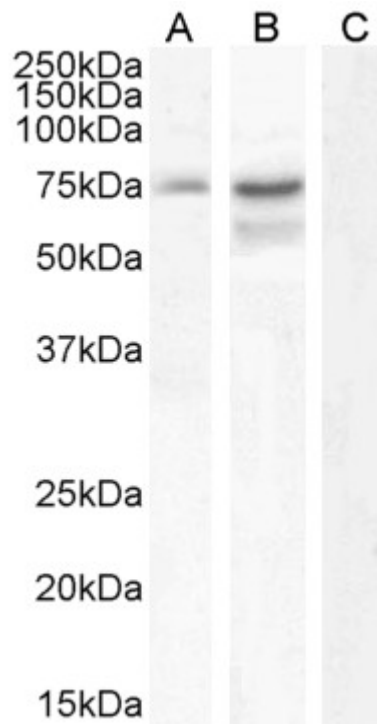
**Peptide ELISA:** antibody detection limit dilution 1:16000.

**Western blot:** Approx 75kDa band observed in lysates of cell lines HepG2 and U251 (calculated MW of 77.2kDa according to NP\_001014841.1). An additional band of unknown identity was also observed in U251 lysates at 55kDa. This band was successfully blocked by incubation with the immunizing peptide. Recommended concentration: 0.3-1µg/ml. Primary incubation 1 hour at room temperature. Preliminary testing was unsuccessful on Rat and Mouse Kidney and Brain and NIH3T3 cell line for this particular batch.

### Species Reactivity

**Tested:** Human

**Expected from sequence similarity:** Human, Mouse, Rat, Dog, Cow



EB07600 (0.3 $\mu$ g/ml) staining of HepG2 (A) and (1 $\mu$ g/ml) U251 cell lysate (B) + peptide (C) (35 $\mu$ g protein in RIPA buffer). Detected by chemiluminescence.