



## UK Office

### Everest Biotech Ltd

Cherwell Innovation Centre  
77 Heyford Park  
Upper Heyford  
Oxfordshire  
OX25 5HD  
UK

Enquiries:

[info@everestbiotech.com](mailto:info@everestbiotech.com)

Sales:

[sales@everestbiotech.com](mailto:sales@everestbiotech.com)

Tech support:

[support@everestbiotech.com](mailto:support@everestbiotech.com)

Tel: +44 (0)1869 238326

[www.everestbiotech.com](http://www.everestbiotech.com)

**Research Use Only. Not for  
diagnostic or therapeutic use.**

## EB10984 - Goat Anti-Neurofascin (aa877-890) Antibody

Size: 100µg specific antibody in 200µl



### Target Protein

**Principal Names:** NFASC, neurofascin, DKFZp686P2250, FLJ46866, KIAA0756, NF, NRCAML, OTTHUMP00000065316, OTTHUMP00000065319, OTTHUMP00000065323, OTTHUMP00000065324, neurofascin homolog

**Official Symbol:** NFASC

**Accession Number(s):** NP\_001005388.2; NP\_001153803.1; NP\_001153804.1; NP\_055905.2;

**Human GeneID(s):** [23114](#)

**Non-Human GeneID(s):** 269116 (mouse), 116690 (rat)

**Important Comments:** This antibody is expected to recognize reported isoforms 1, 2, 3 and 4 (NP\_001005388.2; NP\_001153803.1, NP\_001153804.1 and NP\_055905.2 resp) .

### Immunogen

Peptide with sequence C-NFSPNQTKFTVQRT, from the internal region of the protein sequence according to NP\_001005388.2; NP\_001153803.1; NP\_001153804.1; NP\_055905.2;.

Please note the [peptide](#) is available for sale.

### Purification and Storage

Purified from goat serum by ammonium sulphate precipitation followed by antigen affinity chromatography using the immunizing peptide.

Supplied at 0.5 mg/ml in Tris saline, 0.02% sodium azide, pH7.3 with 0.5% bovine serum albumin.

Aliquot and store at -20°C. Minimize freezing and thawing.

### Applications Tested

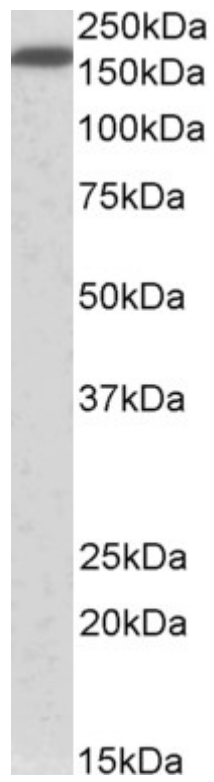
**Peptide ELISA:** antibody detection limit dilution 1:16000.

**Western blot:** Approx 170kDa band observed in Human Lung lysates (calculated MW of 138kDa according to NP\_001005388.2). The observed molecular weight corresponds to earlier findings in literature with different antibodies (Kirschbaum et al, J Biol Chem. 2009 Oct 16;284(42):28533-42. PMID: 19666467). Recommended concentration: 0.5-2µg/ml. Primary incubation was 1 hour. Preliminary testing was unsuccessful on Mouse and Rat Brain for this particular batch.

### Species Reactivity

**Tested:** Human

**Expected from sequence similarity:** Human, Mouse, Rat, Dog, Cow



EB10984 (0.5 $\mu$ g/ml) staining of Human Lung lysate (35 $\mu$ g protein in RIPA buffer). Detected by chemiluminescence.