



## UK Office

### Everest Biotech Ltd

Cherwell Innovation Centre  
77 Heyford Park  
Upper Heyford  
Oxfordshire  
OX25 5HD  
UK

Enquiries:

[info@everestbiotech.com](mailto:info@everestbiotech.com)

Sales:

[sales@everestbiotech.com](mailto:sales@everestbiotech.com)

Tech support:

[support@everestbiotech.com](mailto:support@everestbiotech.com)

Tel: +44 (0)1869 238326

[www.everestbiotech.com](http://www.everestbiotech.com)

**Research Use Only. Not for  
diagnostic or therapeutic use.**

## EB07955 - Goat Anti-Neurofibromin 2 (Zebrafish) Antibody

Size: 100µg specific antibody in 200µl



### Target Protein

**Principal Names:** nf2, neurofibromin 2 (bilateral acoustic neuroma), MGC123124, NF2a

**Official Symbol:** nf2b

**Accession Number(s):** NP\_998116.1

### Immunogen

Peptide with sequence C-EKSKHLQDQLK, from the internal region of the protein sequence according to NP\_998116.1.

Please note the [peptide](#) is available for sale.

### Purification and Storage

Purified from goat serum by ammonium sulphate precipitation followed by antigen affinity chromatography using the immunizing peptide.

Supplied at 0.5 mg/ml in Tris saline, 0.02% sodium azide, pH7.3 with 0.5% bovine serum albumin.

Aliquot and store at -20°C. Minimize freezing and thawing.

### Applications Tested

**Peptide ELISA:** antibody detection limit dilution 1:32000.

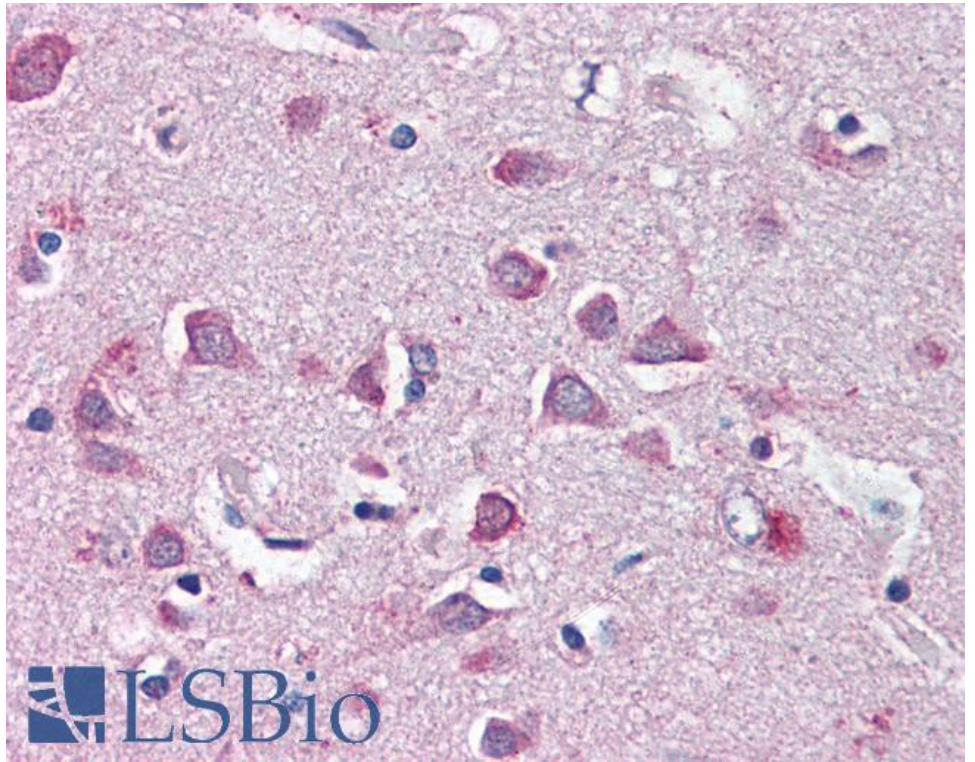
**IHC:** Paraffin embedded Human Brain (Cortex). Recommended concentration: 5µg/ml.

This product has been successfully used by customers on Formalin/PFA-fixed paraffin-embedded sections of Zebrafish Brain (Cortex).

### Species Reactivity

**Tested:** Human, Zebrafish

**Expected from sequence similarity:** Zebrafish



EB07955 (5µg/ml) staining of paraffin embedded Human Cortex. Steamed antigen retrieval with citrate buffer pH 6, AP-staining.